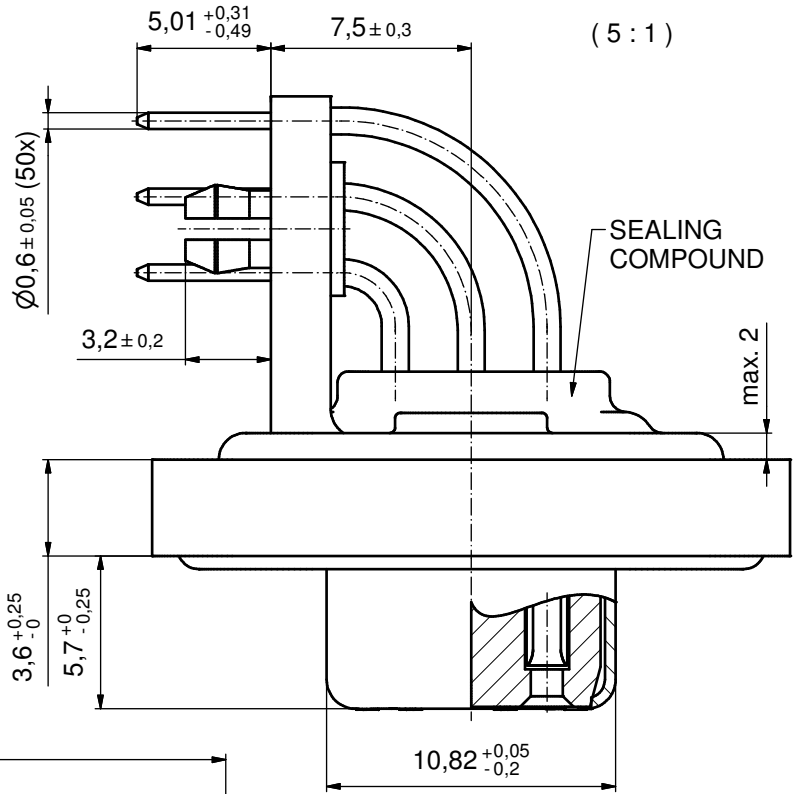
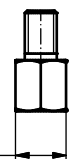
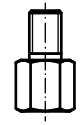
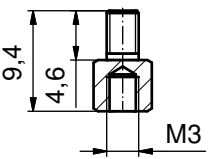
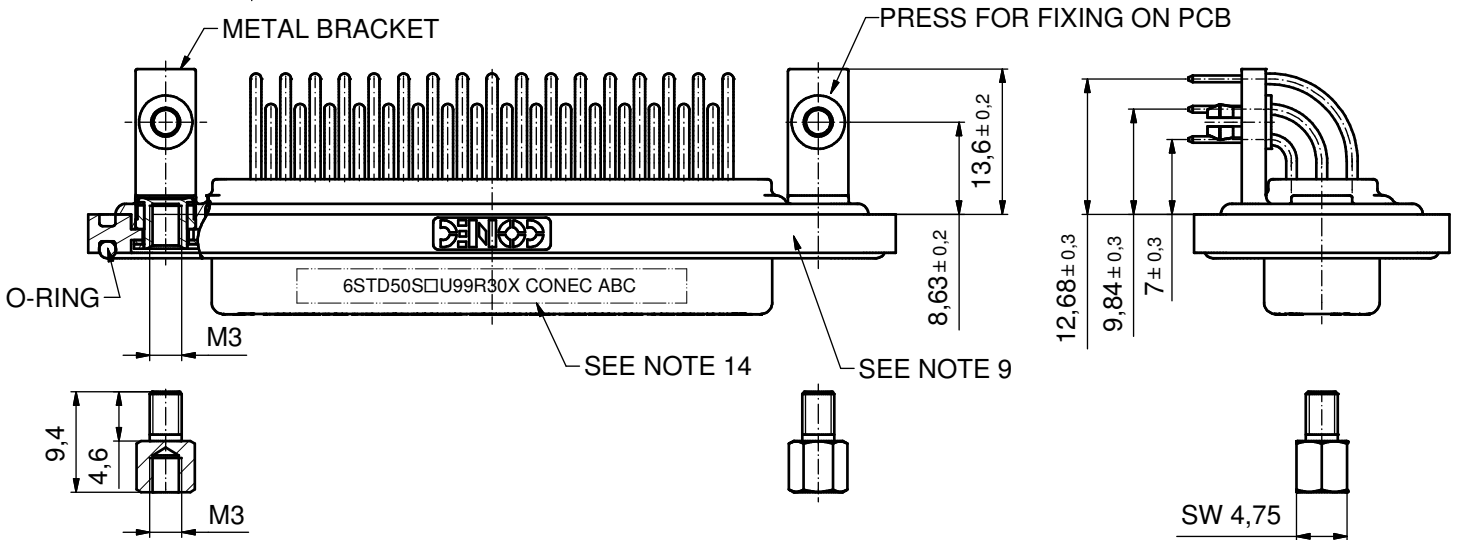
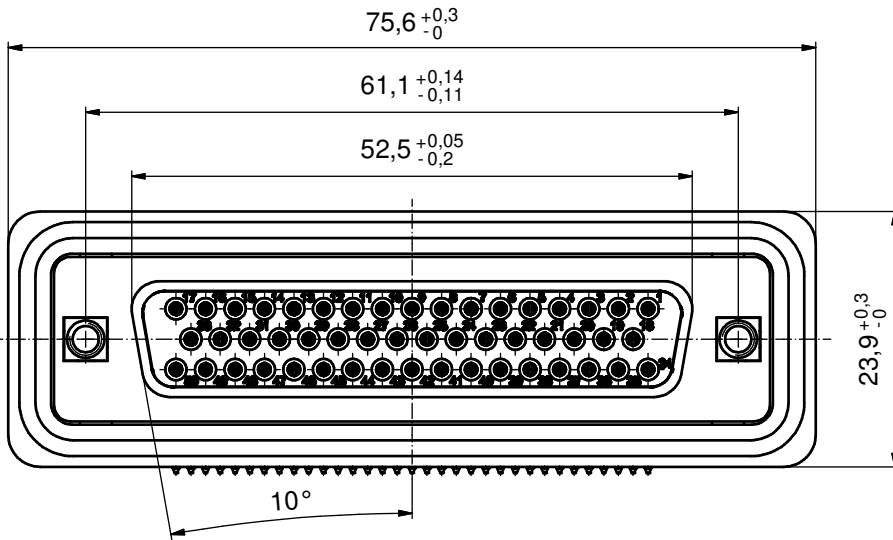


NOTES:

1. FOR WAVESOLDERING
(SOLDER BATH TEMPERATURE 240°C FOR 5 SEC./
AND SOLDER PREHEAT 120°C FOR 120 SEC.)
2. METALSHELLS: COPPER ALLOY;
min. 315µin TIN over 40-80µin NICKEL
3. INSULATORS: PBT GF UL 94 V-0, BLACK
4. CONTACTS: COPPER ALLOY; PLATING (SEE PART NO):
□ PLEASE ADD A for GOLD FLASH over NICKEL (PREFERRED TYPE)
□ PLEASE ADD B for 20µin HARD GOLD over min. 50µin NICKEL
□ PLEASE ADD C for 30µin HARD GOLD over min. 50µin NICKEL
5. THREADED INSERTS: COPPER ALLOY;
min. 200µin TIN over 80µin NICKEL
6. COLLARS: COPPER ALLOY; NICKEL PLATED
7. METAL BRACKETS: ZINC DIE CAST;
300µin COPPER/ 40-120µin NICKEL/ 120-200µin TIN
8. HEXLOCKING SCREWS: STAINLESS STEEL
9. FRAME: ZINC DIE CAST; NICKEL PLATED
10. O-RING: SILICON; BLUE
11. SEALING COMPOUND: PUR; BLUE
12. P.C.B. HOLE DRILLINGS and
RECOMMENDED PANEL CUT-OUT ON SHEET 2
13. RECOMMENDED TORQUE FOR MOUNTING SCREW
35Ncm (3,1in.LB)/max. 40Ncm (3,5 in.LB)
14. CONNECTOR IS PART MARKED: 6STD50S□U99R30X CONEC ABC



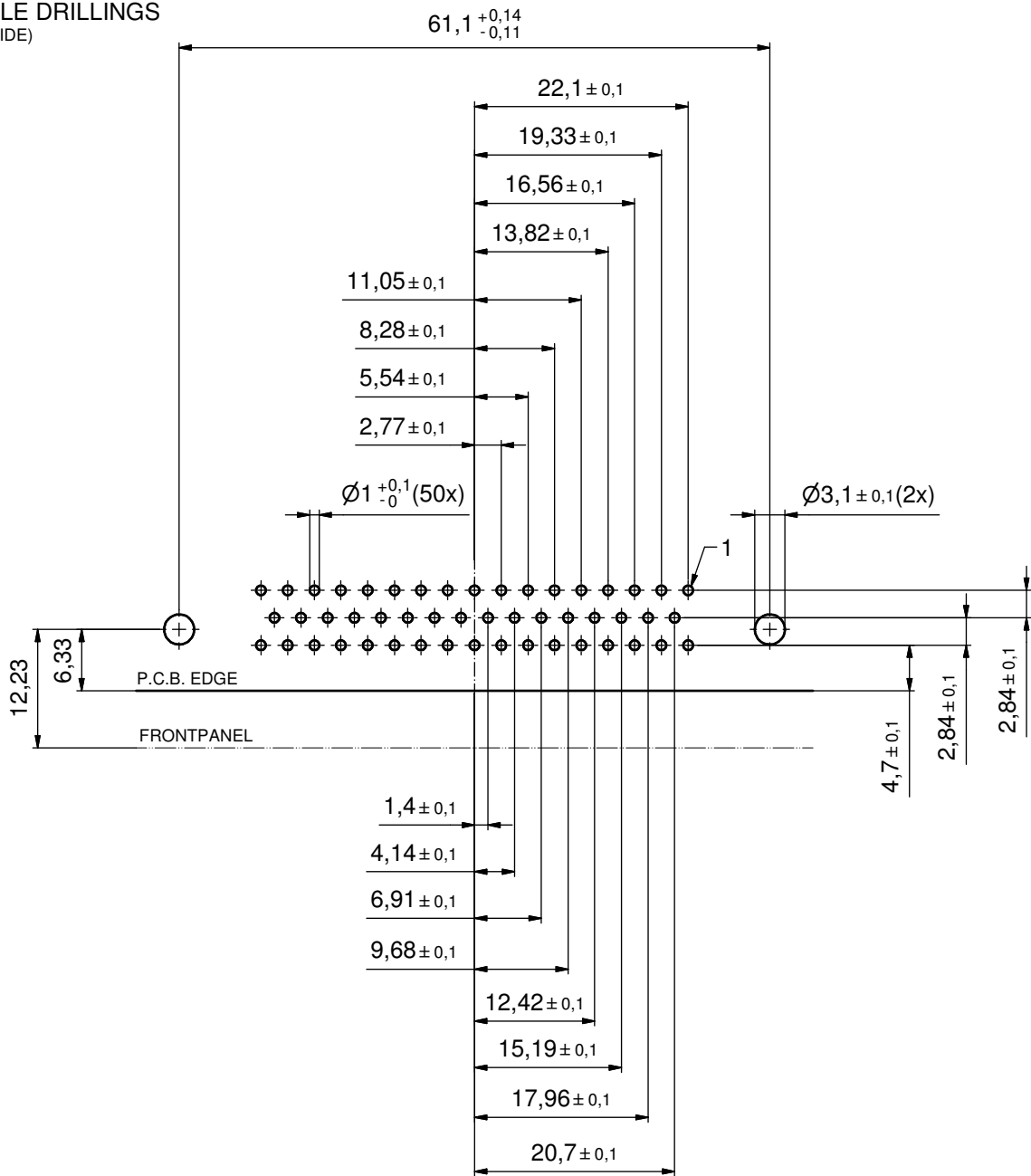
AT ALL TIMES WATER RESISTANT CONNECTORS NOT IN USE SHOULD BE COVERED WITH A CONEC WATER RESISTANT CAP OR WATER TIGHT HOOD.



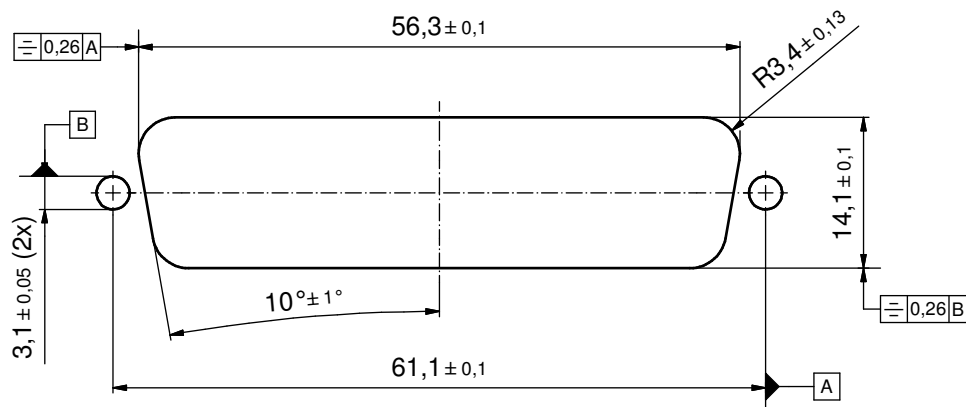
Directive 2002/95/EC RoHS compliant

THIS DRAWING MAY NOT BE COPIED OR REPRODUCED IN ANY WAY, AND MAY NOT BE PASSED ON TO A THIRD PARTY WITHOUT WRITTEN PERMISSION. OWNERSHIP AND COPYRIGHT OF CONEC GmbH DO NOT ALTER CAD DRAWING BY HAND	tolerance		dim. in mm		scale: 2:1 (5:1)	
					material: SEE NOTES	
			date		title:	
			name		D-SUB FEMALE 90°	
			drawn 24.01.13		50pos. SOLDER PIN ANGLED	
			appd. 24.01.13		with threaded insert, metal bracket, snap, hex bolt	
			norm		dwg no:	
			d-old		15K1A1259	
	a Original		CONEC®		DIN-A3	
	rev. description date name				sh: 1/2	
					part no: 6STD50S□U99R30X (see note 4)	

P.C.B. HOLE DRILLINGS
(P.C.B. TOP SIDE)



RECOMMENDED PANEL CUT-OUT



THIS DRAWING MAY NOT BE COPIED OR REPRODUCED IN ANY WAY, AND MAY NOT BE PASSED ON TO A THIRD PARTY WITHOUT WRITTEN PERMISSION. OWNERSHIP AND COPYRIGHT OF CONEC GmbH DO NOT ALTER CAD DRAWING BY HAND				tolerance	dim. in mm	scale:	2:1		
				date		name	material:	SEE SHEET 1	
	drawn	24.01.13	Henneboel		title:			P.C.B. HOLE DRILLINGS	
	appd.	24.01.13	Fischer		D-SUB FEMALE 50pos. SOLDER PIN ANGLED with threaded insert, metal bracket, snap, hex bolt			dwg no:	DIN-A3
	norm				part no:			SEE SHEET 1	
rev.	a	Original					15K1A1259	sh: 2/2	
description							part no:	SEE SHEET 1	