

TSL4531 EVM

Quick Start Guide

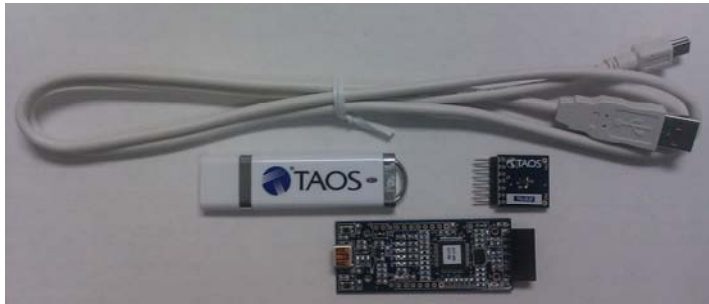


Figure 1: TSL4531 EVM Kit

OUT OF THE BOX

Each TSL4531 EVM comes with the following components:

- Controllerboard v2.1
- TSL4531 Daughterboard
- USB Cable with A connector and mini B connector
- Flash Drive with Application Software and Documents
- Quick Start Guide (not shown)

SOFTWARE INSTALLATION

Most PCs should have one or more Universal Serial Bus (USB) ports. Install the TAOS flash drive into an unused USB port.

1. Double-click the **Setup.exe** file on the flash drive, or
2. Click Start -> Click Run -> Type E: setup.exe and press Enter. IMPORTANT: Use the appropriate drive letter in the above command to install the software. Flash Drive will commonly be assigned the next available drive letter for example C: hard drive D: CD-ROM E: flash drive

The TAOS Digital Light Sensor Setup Wizard will open and guide you through the installation of the TSL4531 host software. (Figure 2 through 8). To un-install or re-install; re-run the setup.exe file again. (Figure 9).

Connect Hardware

Plug the TSL4531 Daughterboard into the Controller board. (Figure 1) Always use ESD procedures when handling the EVM.

Using the enclosed USB cable, plug the mini-B connector into the EVM module. Using the other end of the cable, plug the USB A-connector into a USB port on the computer.

After connecting the hardware, if the "Found New Hardware" message appears (Figure 2 or 3), then continue on to USB Driver Installation. Otherwise, skip to Start Application.

Start Application

Click the TAOS Digital Light Sensors icon on the desktop.

Contact and Support

For detail in using the TSL4531 EVM please refer to the User's Guide included in the documents.

If any technical difficulties are encountered, use the link below to submit a technical support request anytime.

<http://www.taosinc.com/Support.aspx>

Rev 2.0

or call (972) 673-0759 (main) M-F 8AM-5PM CST

You may also use the link below to find worldwide local representatives in your area.

<http://www.taosinc.com/Sales.aspx>



Figure 2 License Agreement Screen

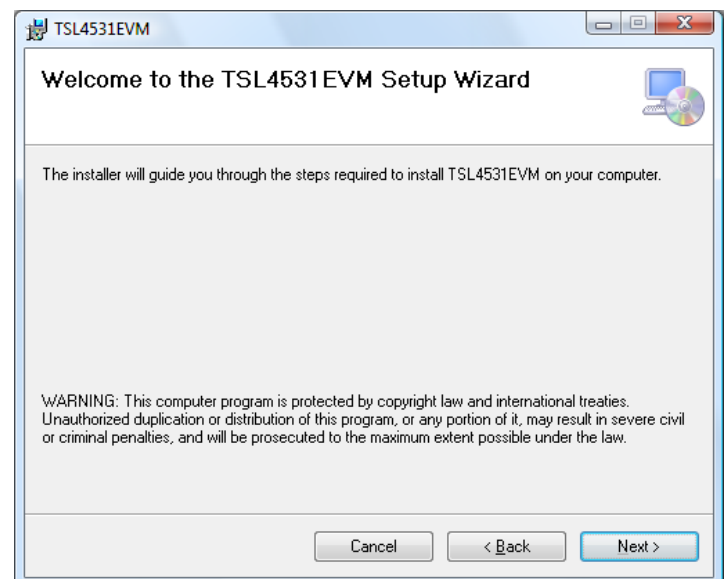


Figure 3 Welcome Screen

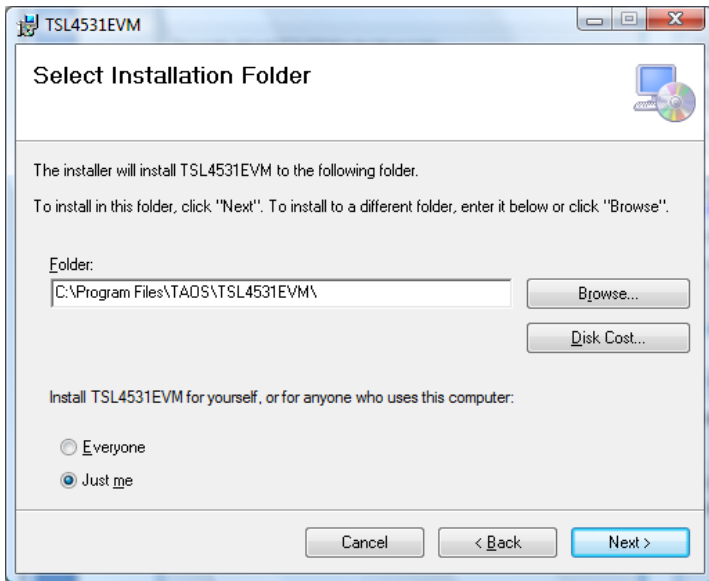


Figure 4 Select Installation Folder

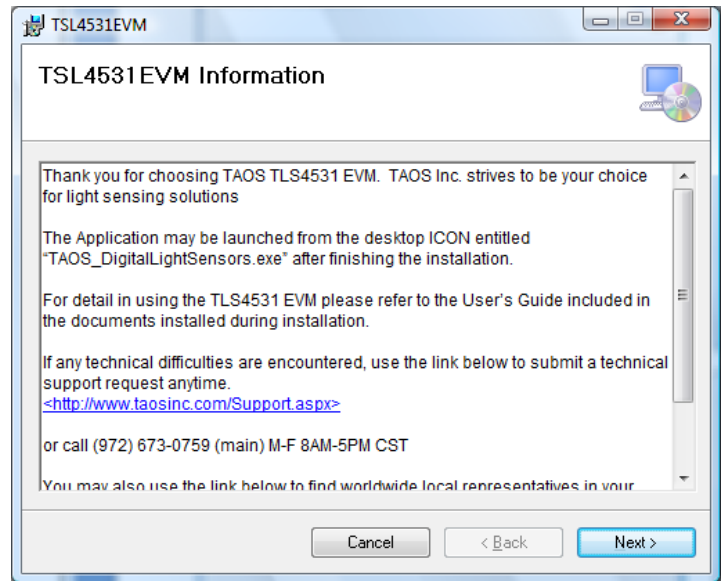


Figure 7 Thank You Screen

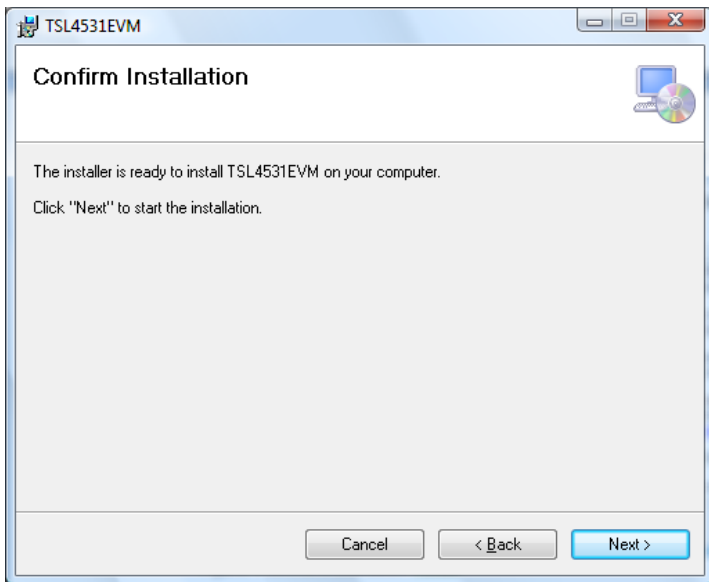


Figure 5 Confirm Installation

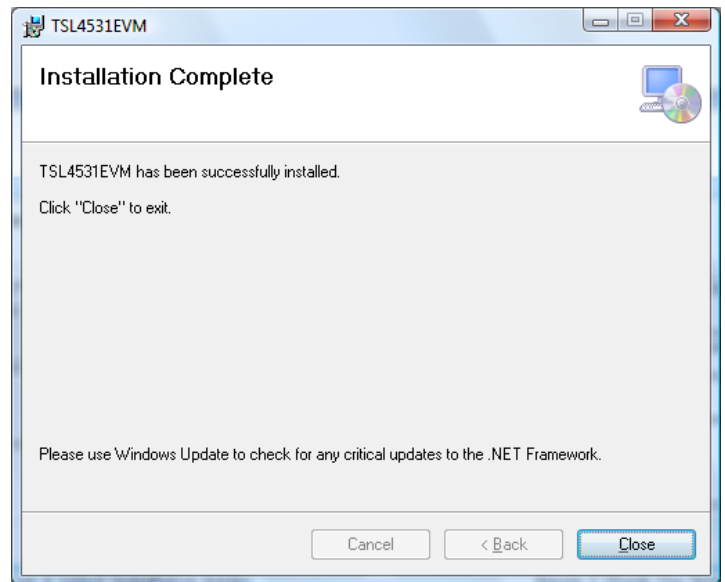


Figure 8 Installation Completed Successfully

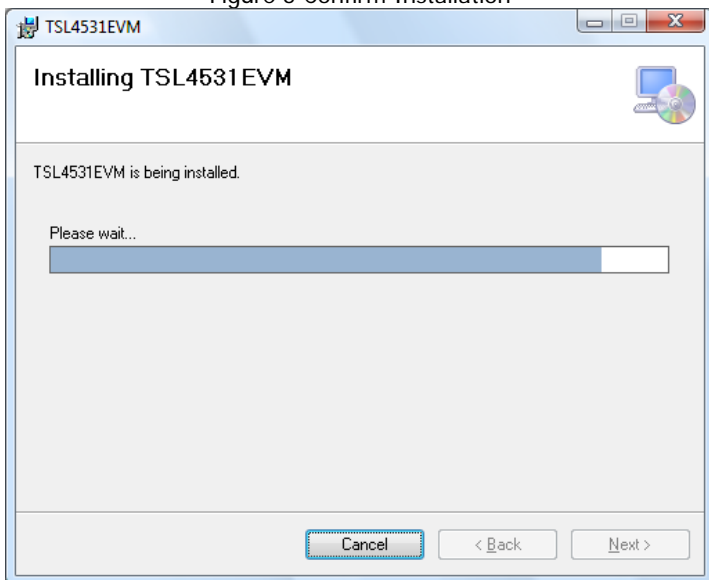


Figure 6 Installation in Progress

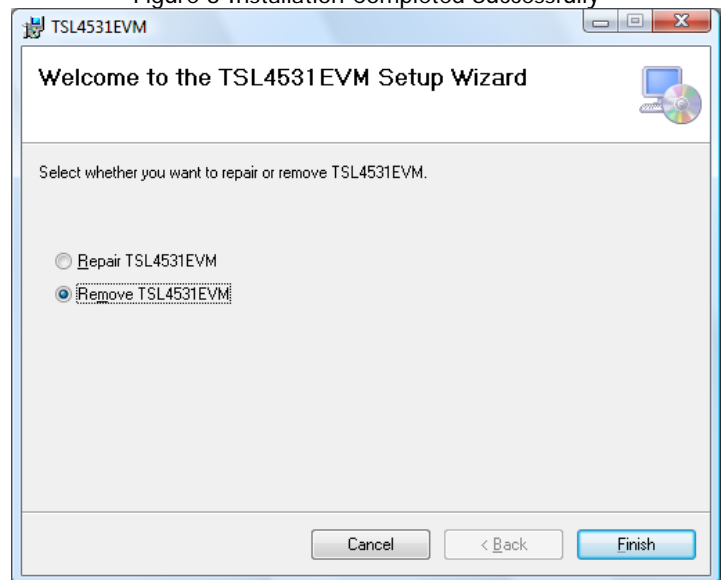


Figure 9 Remove Installation