

DETAILS

Product Number	C13055_EMMA-360
Family	Emma
Type	Lens
Color	clear
Diameter	9,9x9,9 mm
Height	5,7 mm
Style	square
Optic Material	PMMA
Holder Material	
Fastening	pin, glue
Status	production ready
ROHS Compliant	Yes
Date Updated	29/06/2016



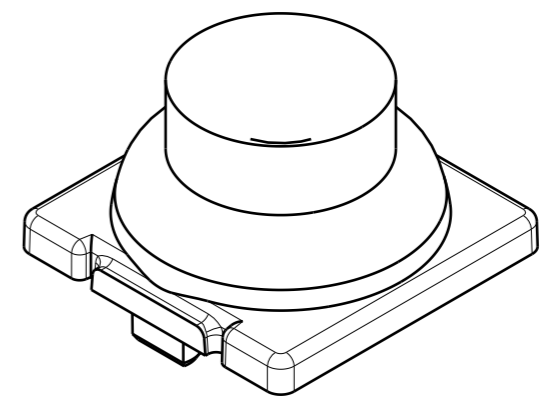
OPTICAL PROPERTIES

LED	Viewing Angle	Light Beam	Efficiency	cd/lm	Connector
XB-D	170 deg	Side-Emitt...	93 %	0.440	-
XP-G	173 deg	Side-Emitt...	88 %	0.390	-
XP-G2	172 deg	Side-Emitt...	90 %	0.410	-
XP-E2	172 deg	Side-Emitt...	94 %	0.430	-
LUXEON A	173 deg	Side-Emitt...	92 %	0.370	-
LUXEON Rebel	165 deg	Side-Emitt...	93 %	0.530	-
LUXEON 3535 2D	170 deg	Side-Emitt...	94 %	0.430	-
NCSxx19A	165 deg	Side-Emitt...	90 %	0.420	-
Oslon Square EC	170 deg	Side-Emitt...	92 %	0.420	-
Z8Y22P	sim: 152	Side-Emitt...	sim: 87 %	sim: 0.350	-

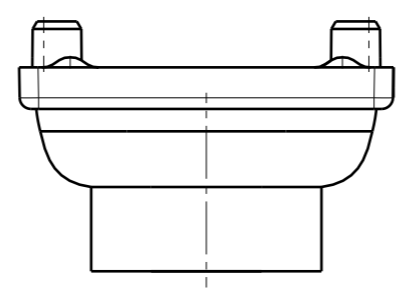
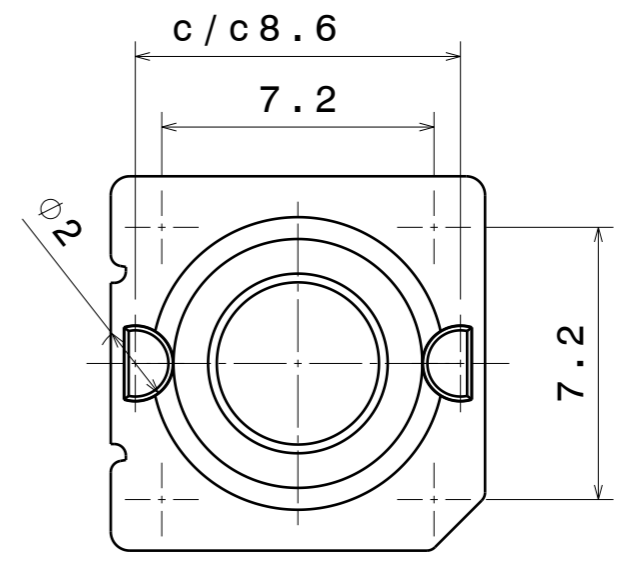
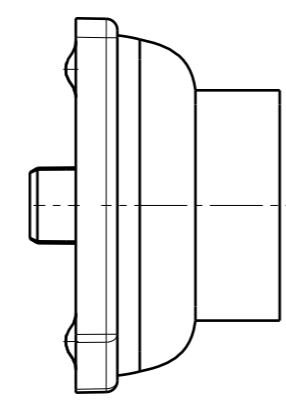
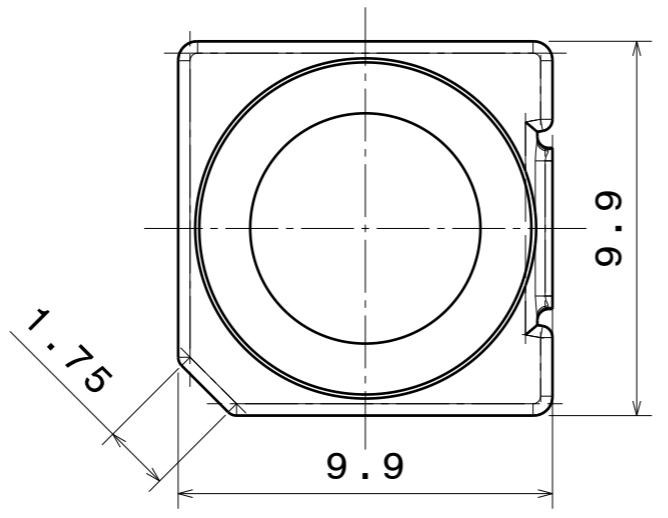
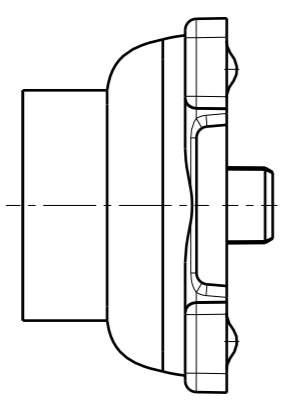
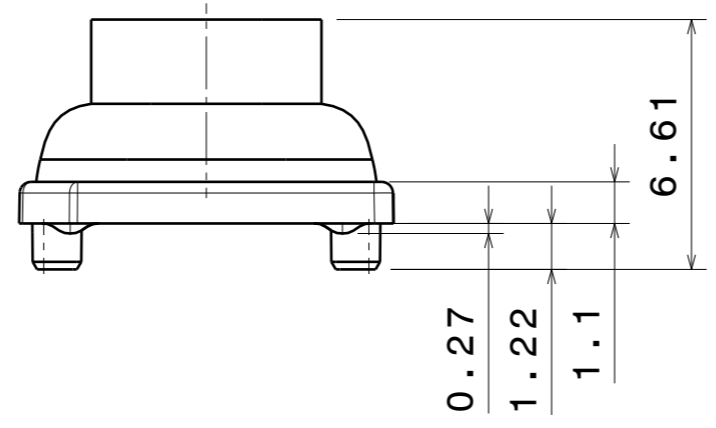
H G F E D C B A

4

4



Isometric view
Scale: 5:1



3

3

2

2

INDEX	PART NO	DESCRIPTION	MATERIAL	COLOUR
1	C13055	EMMA-360	PMMA	

Tolerances if not otherwise shown
According to DIN ISO 2768-1
Linear measures:
Up to 30mm class M, otherwise class C.
According to DIN ISO 2768-2
Form and position: class L

LEDiL LediL Oy
Salorankatu 10
FIN 24240 SALO
Finland

THIRD ANGLE PROJECTION:

DRAWING TITLE
C13055_EMMA-360

This drawing is the property of LEDiL Oy. It may not be reproduced, copied or communicated without a written agreement with LEDiL Oy."

SIZE	PART NUMBER
A3	C13055

SCALE	5:1	WEIGHT	-	SHEET	1/1
-------	-----	--------	---	-------	-----

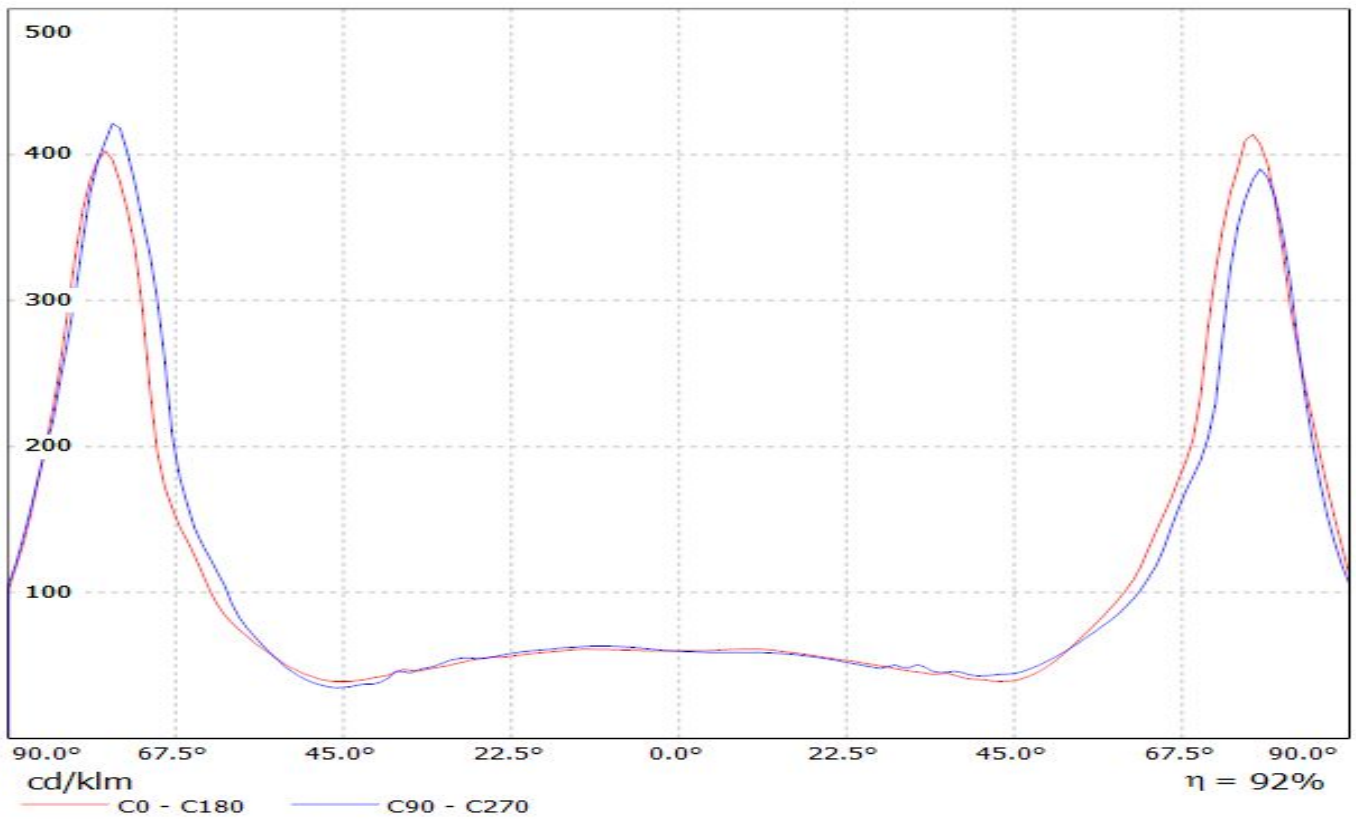
1

1

H G B A

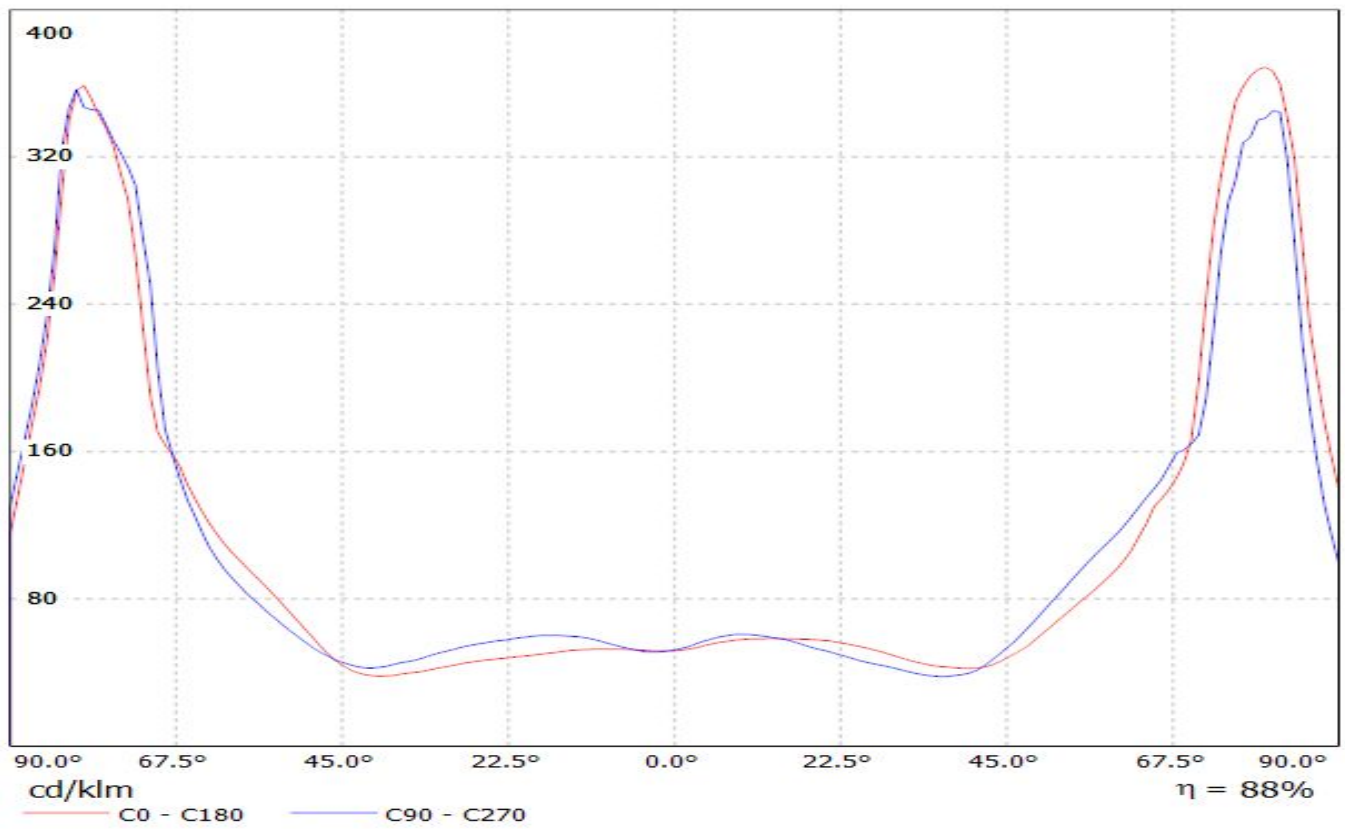
LEDiL Oy C13055_EMMA-360_(XB-D) Eff.92.2% / LDC (Linear)

Luminaire: LEDiL Oy C13055_EMMA-360_(XB-D) Eff.92.2%
Lamps: 1 x XB-D (91.5003lm@250mA)



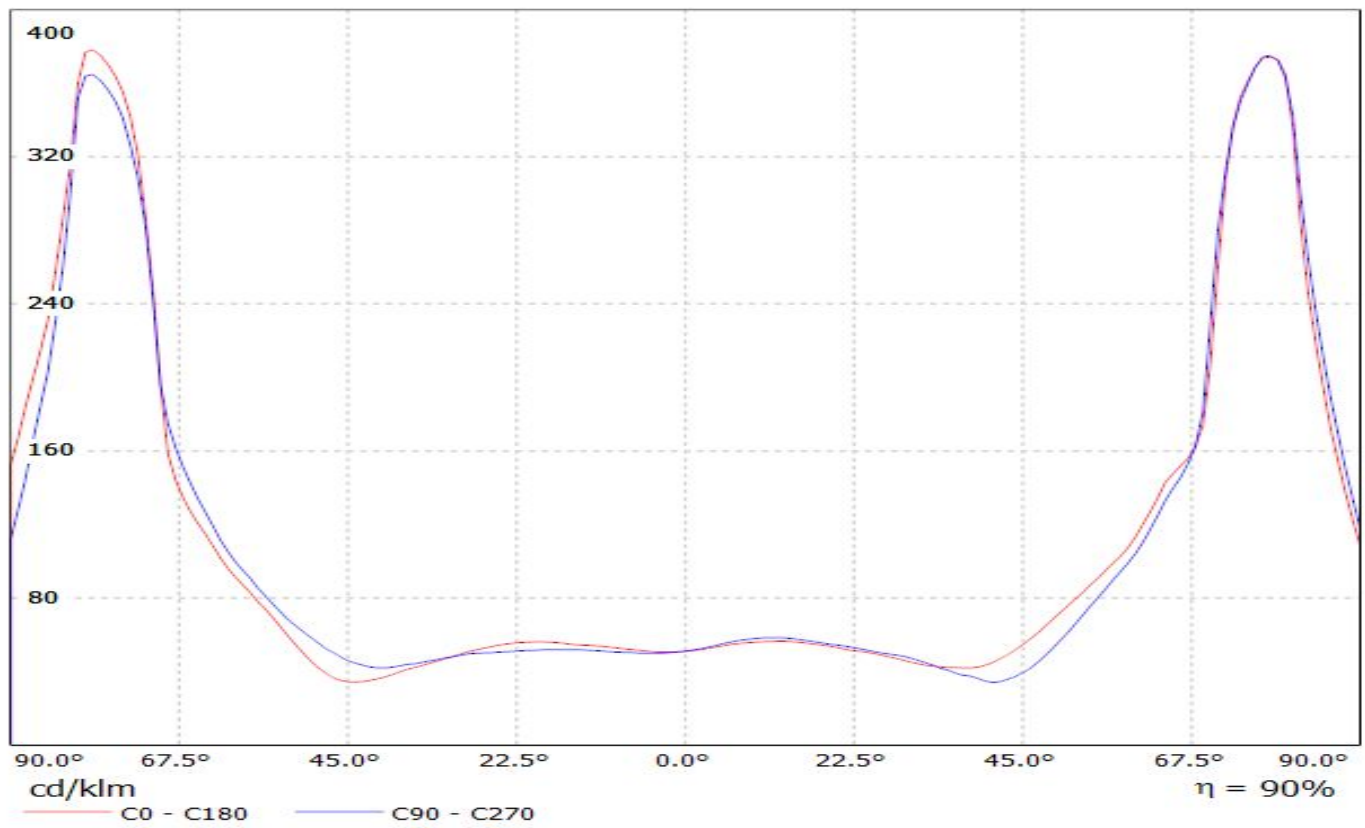
LEDiL Oy C13055_EMMA-360_(XP-G) Eff.88.5% / LDC (Linear)

Luminaire: LEDiL Oy C13055_EMMA-360_(XP-G) Eff.88.5%
Lamps: 1 x XP-G (70.4694lm@250mA)

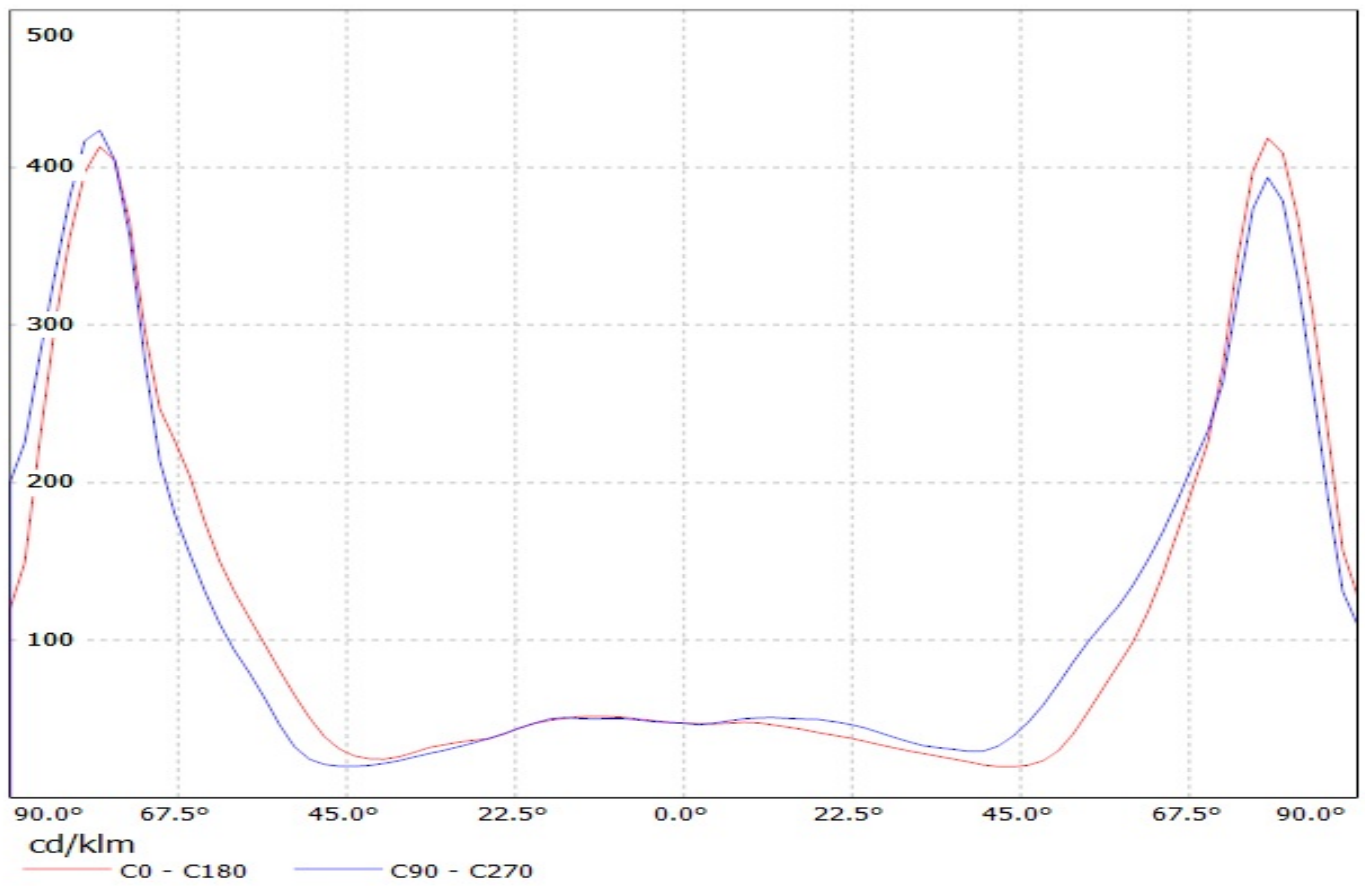


LEDiL Oy C13055_EMMA-360_(XP-G2) Eff.89.6% / LDC (Linear)

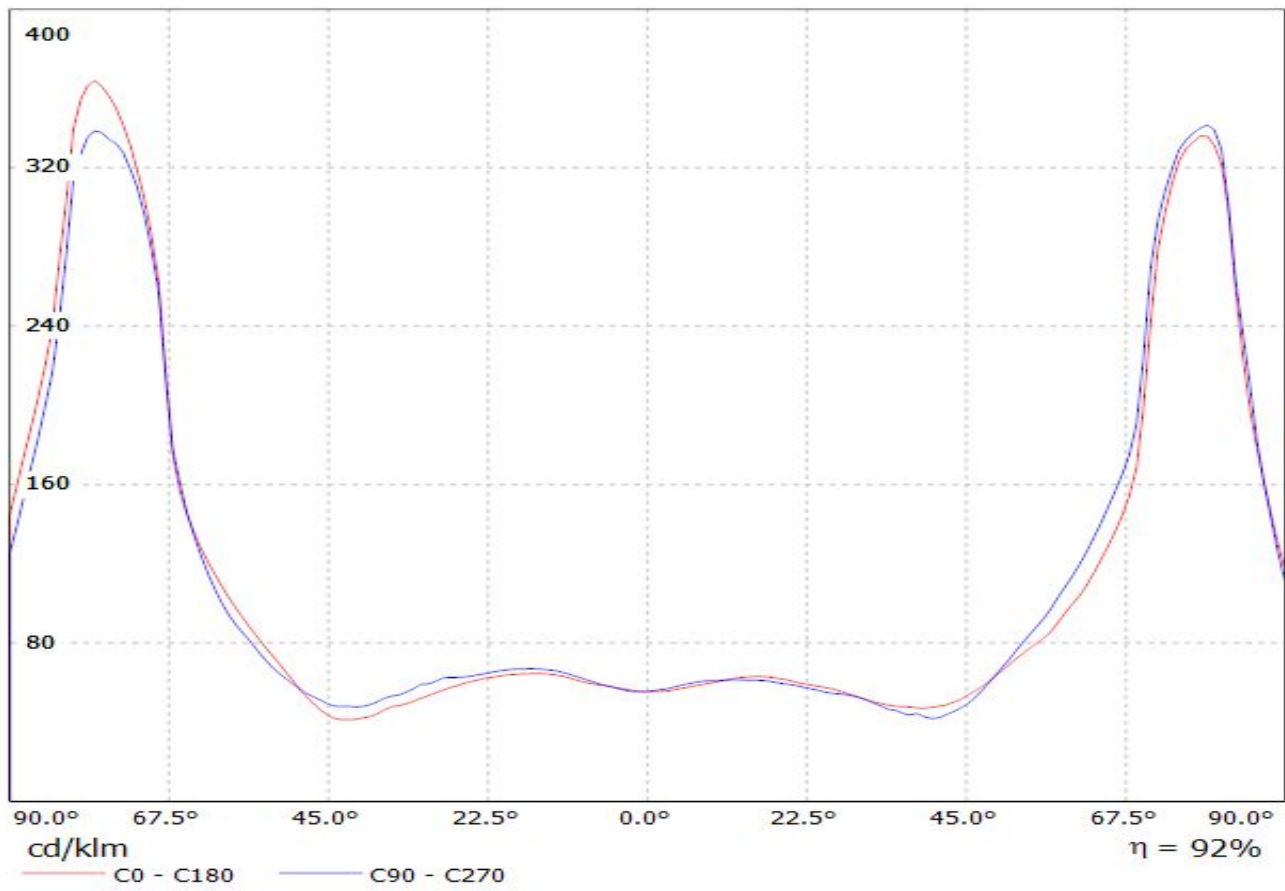
Luminaire: LEDiL Oy C13055_EMMA-360_(XP-G2) Eff.89.6%
Lamps: 1 x XP-G2 (105.532lm@250mA)



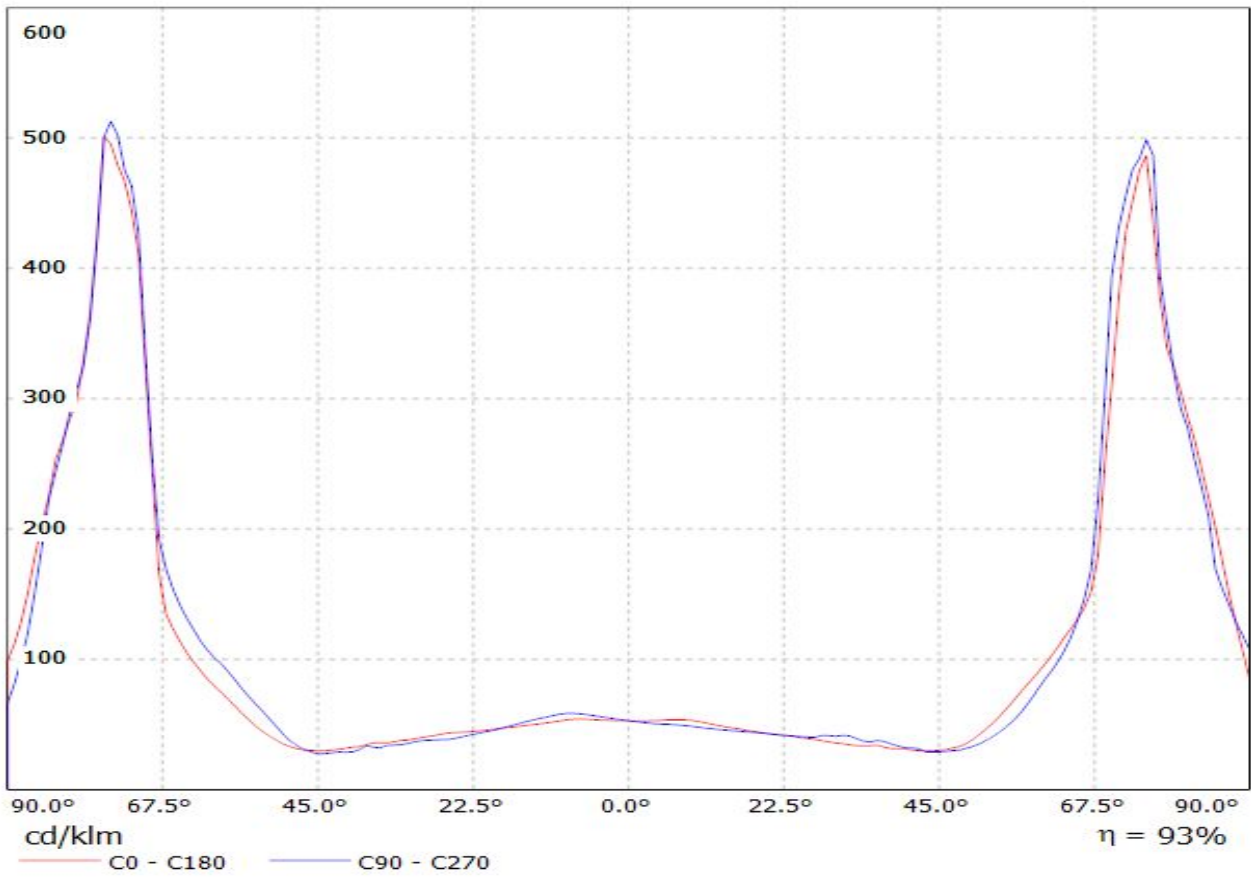
Luminaire: LEDil Oy C13055_EMMA-360_(XP-E2) Efficiency=94%
Lamps: 1 x Cree XP-E2 (XPE-BWT-L1-7B4-Q4-0-01) 84.8lm @ 250mA CCT=3200K P=0.8W I=250mA



Luminaire: LEDiL Oy C13055_EMMA-360_(Luxeon_A) Eff.92.5%
Lamps: 1 x Luxeon_A (64.956lm@250mA)



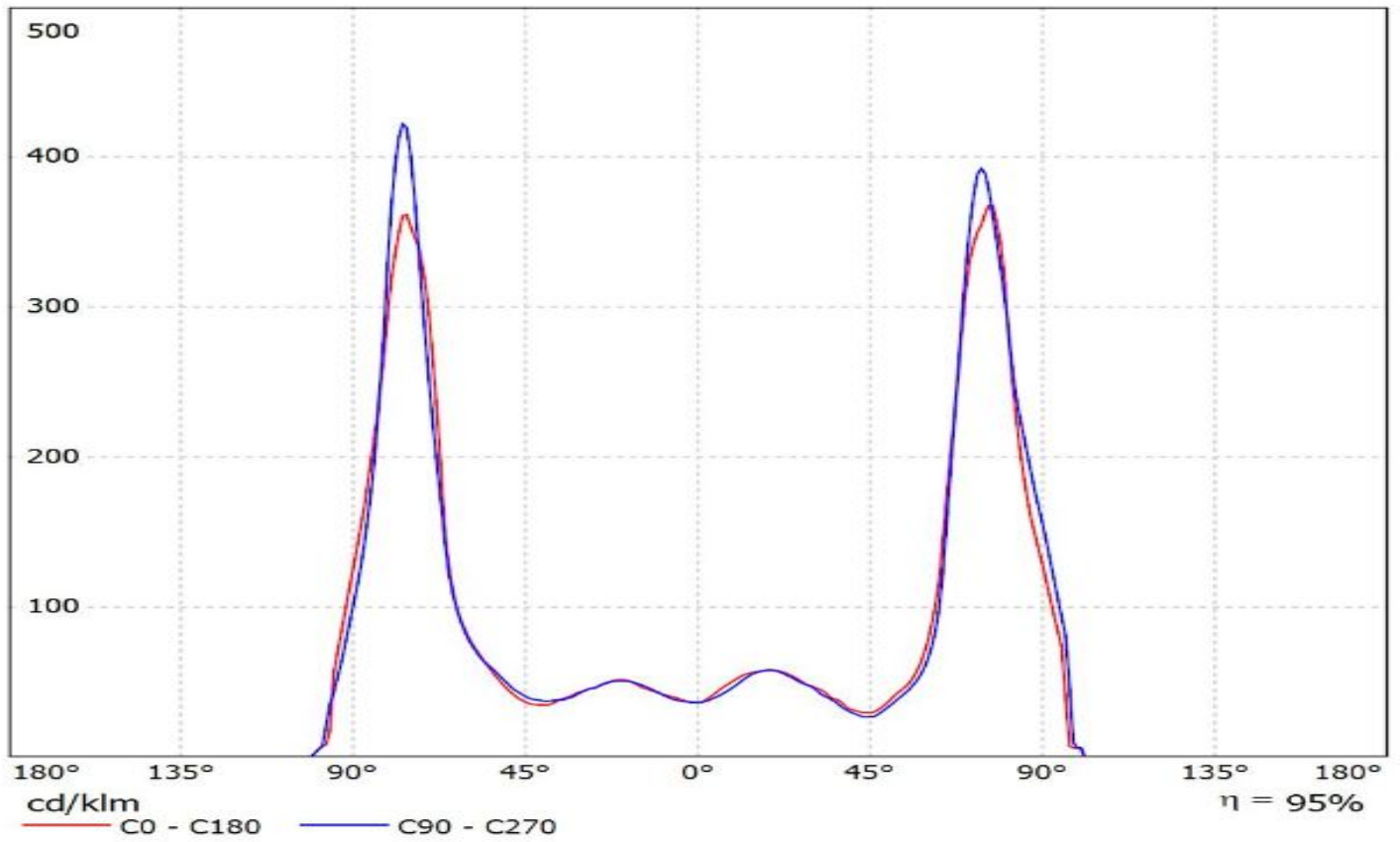
Luminaire: LEDiL Oy C13055_EMMA-360_(Rebel) Eff.92.9%
Lamps: 1 x Rebel (81.7199lm@250mA)



Ledil C13055_EMMA-360_(LUXEON_3535_2D) / LDC (Linear)

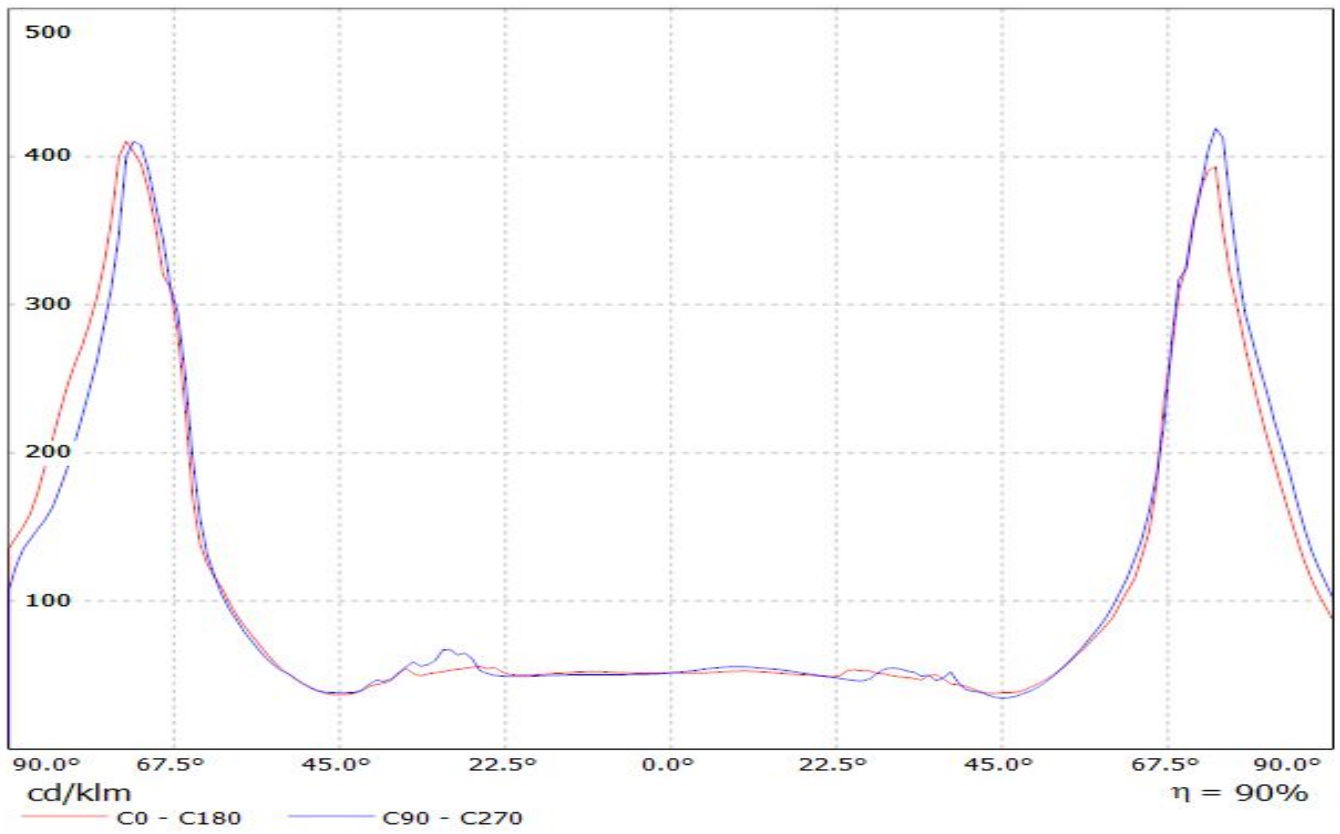
Luminaire: Ledil C13055_EMMA-360_(LUXEON_3535_2D)

Lamps: 1 x LUXEON_3535_2D_(MXC8-PW40-0000)_74.5561lm@100mA_P=0.62W_I=0.1A

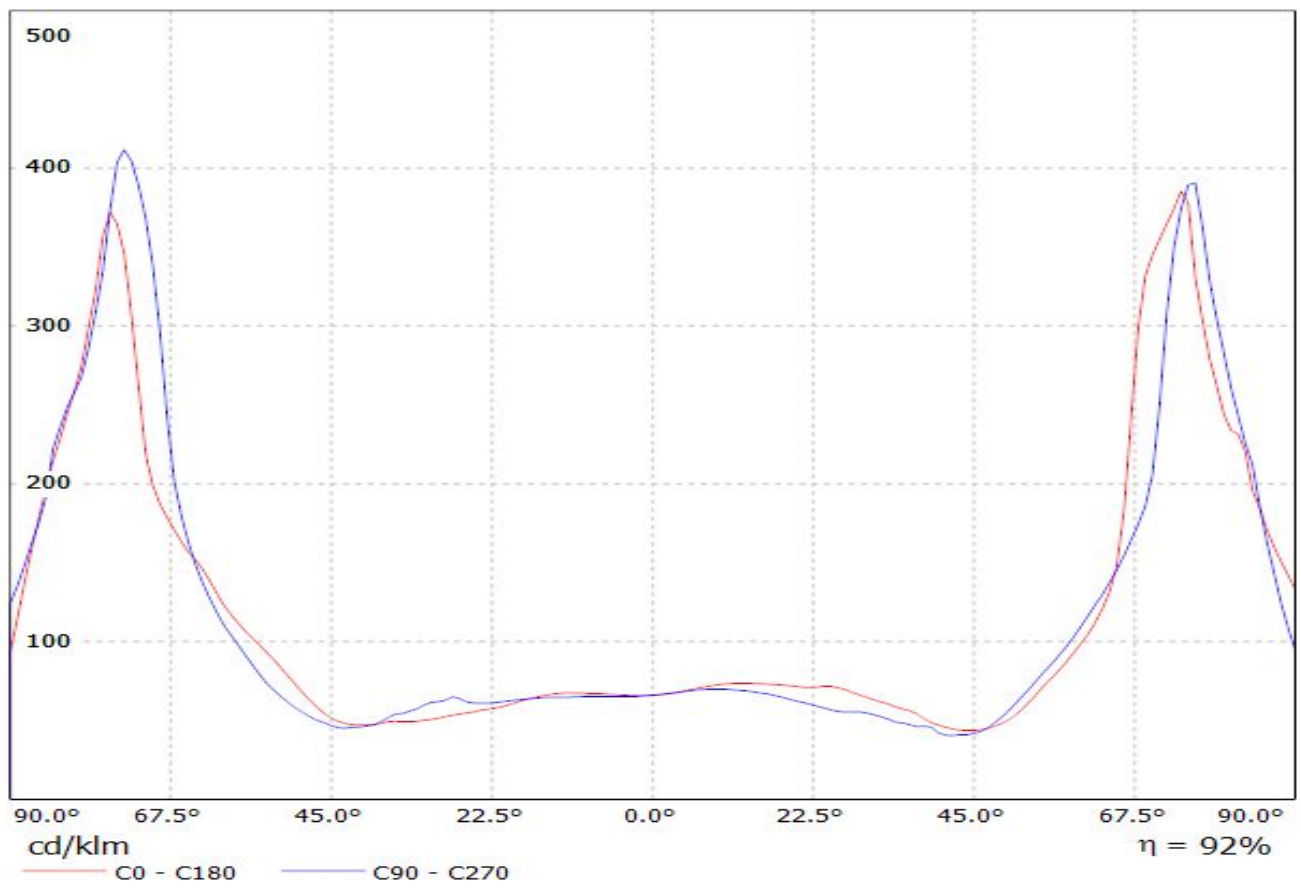


LEDiL Oy C13055_EMMA-360_(NCS19) Eff.89.9% / LDC (Linear)

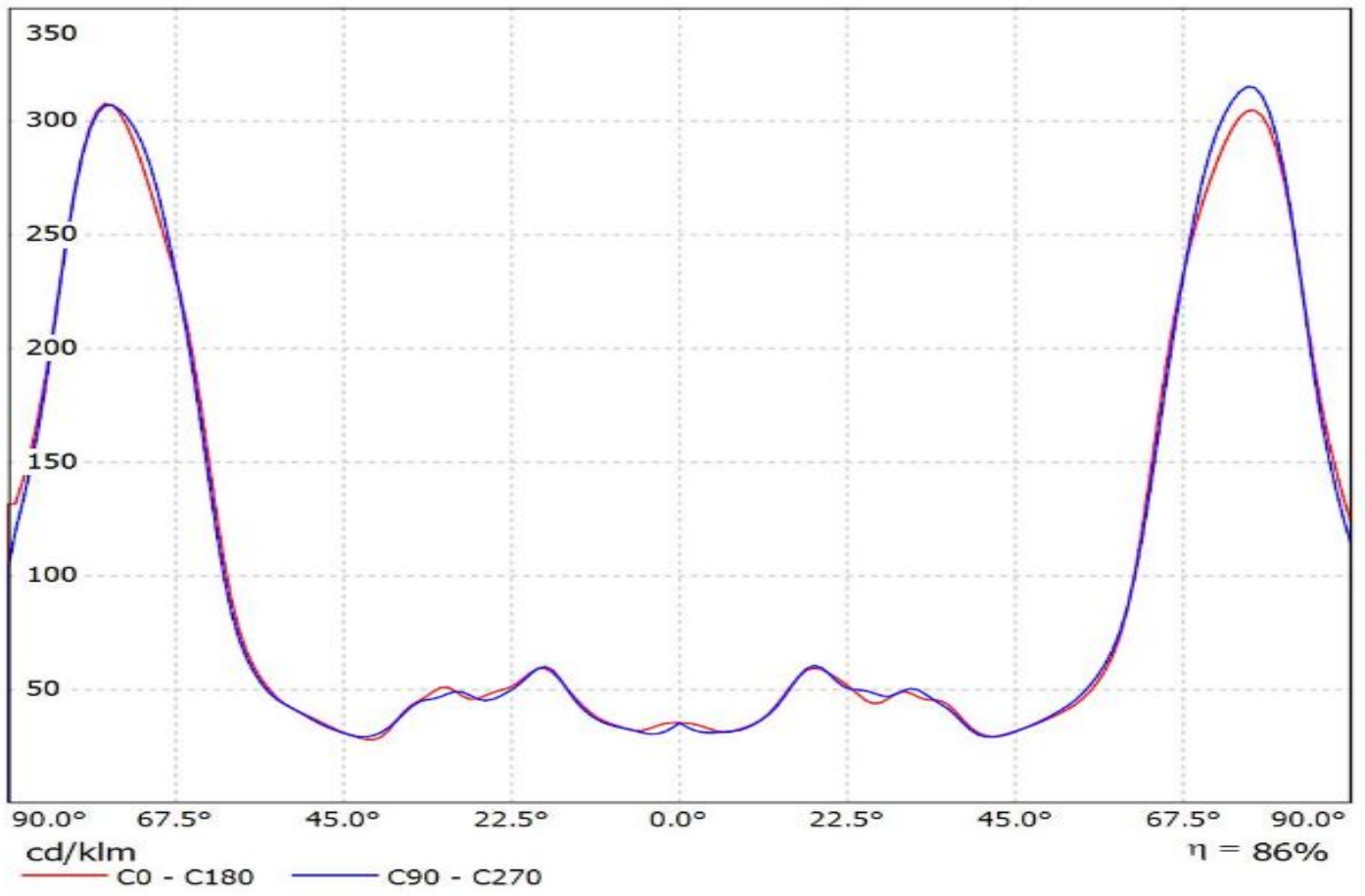
Luminaire: LEDiL Oy C13055_EMMA-360_(NCS19) Eff.89.9%
Lamps: 1 x NCS19 (87.3755lm@250mA)



Luminaire: LEDiL Oy C13055_EMMA-360_(SQ-EC) Eff.91.9%
Lamps: 1 x SQ-EC (67.7108lm@250mA)



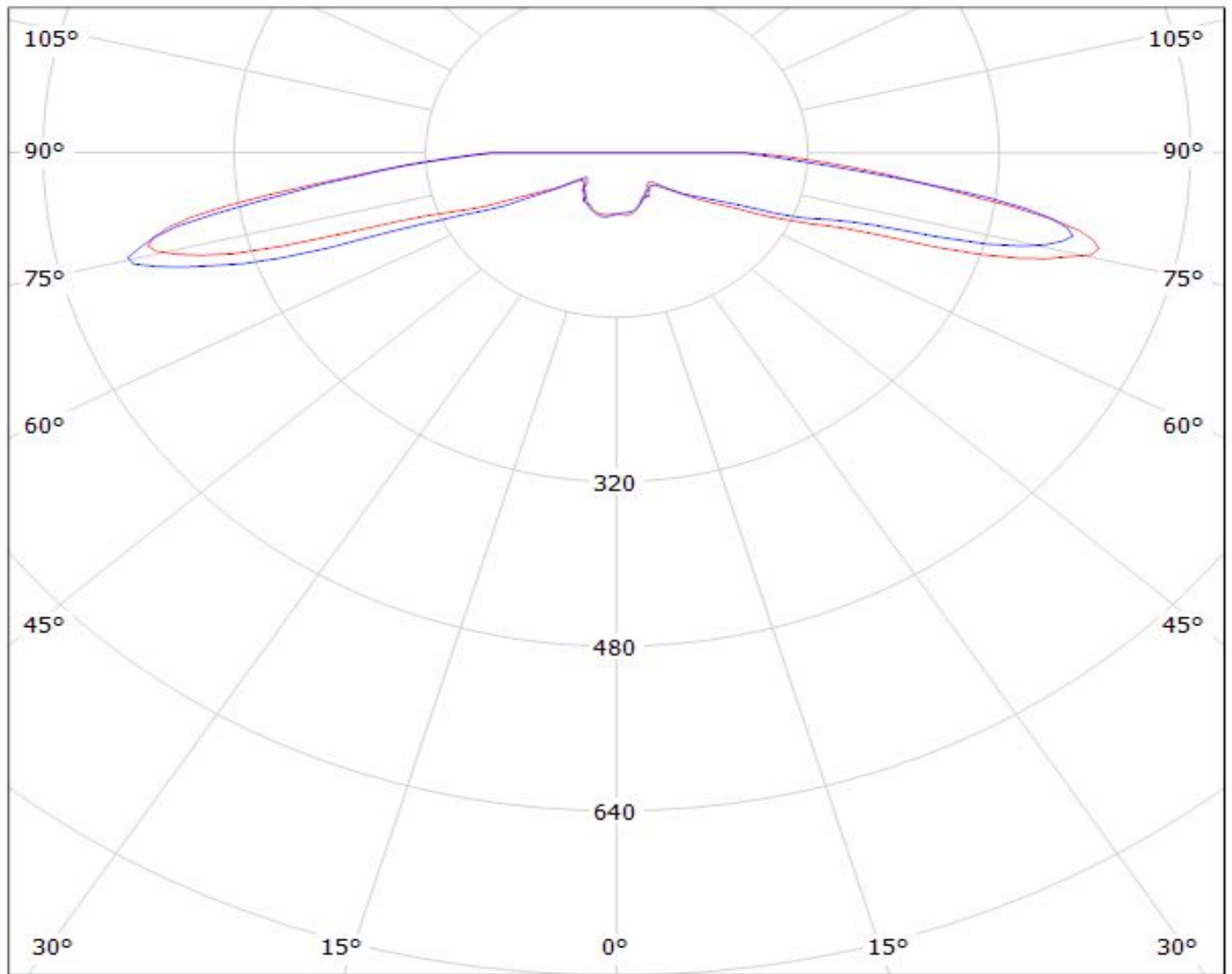
Luminaire: Ledil Oy C13055_EMMA-360_SEOUL_Z8Y22+_SIMULATED
Lamps: 1 x SEOUL Z8Y22 Plus



LEDiL Oy C13055_EMMA-360_(XB-D) Eff.92.2% / LDC (Polar)

Luminaire: LEDiL Oy C13055_EMMA-360_(XB-D) Eff.92.2%

Lamps: 1 x XB-D (91.5003lm@250mA)



cd/klm

— C0 - C180

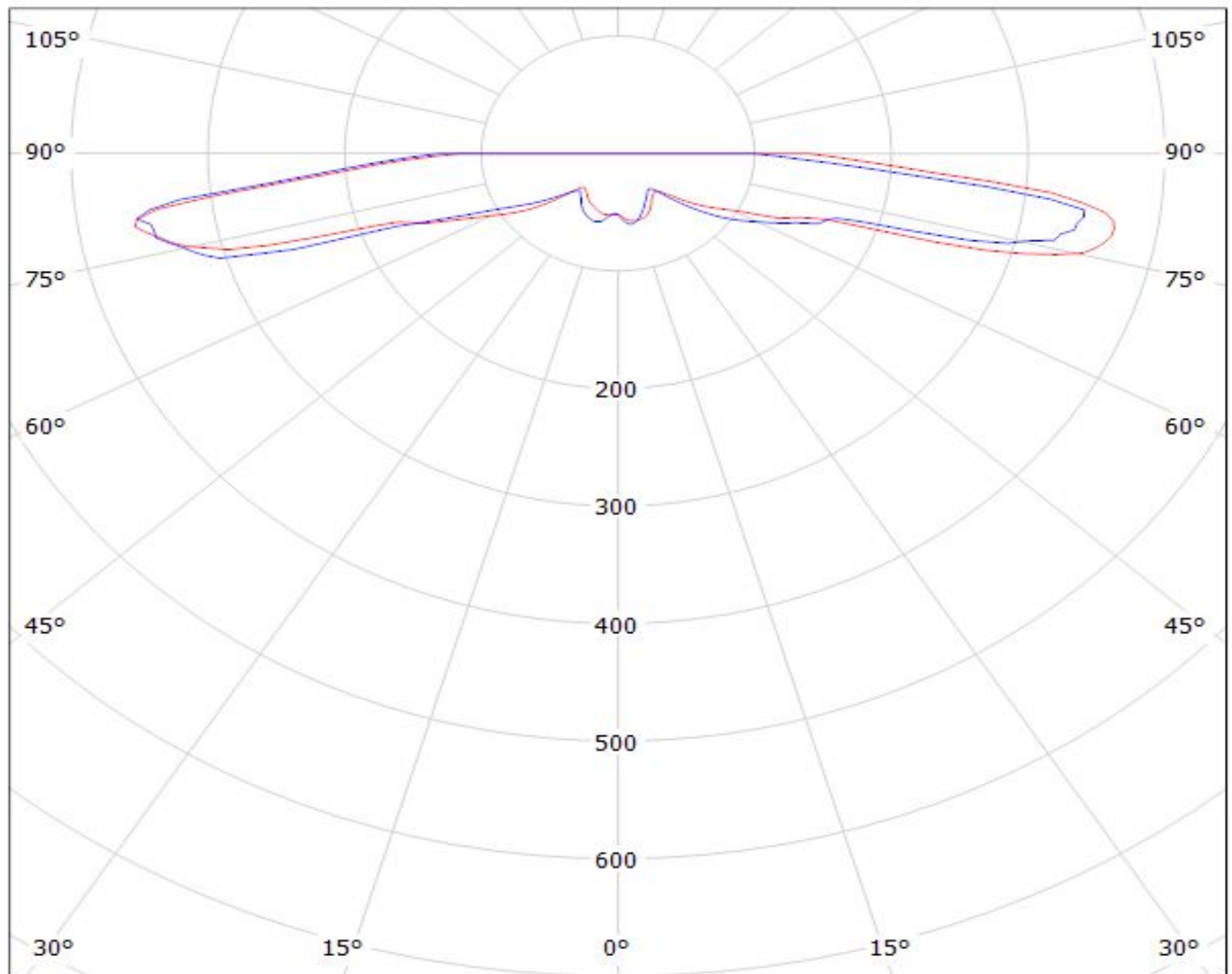
— C90 - C270

$\eta = 92\%$

LEDiL Oy C13055_EMMA-360_(XP-G) Eff.88.5% / LDC (Polar)

Luminaire: LEDiL Oy C13055_EMMA-360_(XP-G) Eff.88.5%

Lamps: 1 x XP-G (70.4694lm@250mA)



cd/klm

— C0 - C180

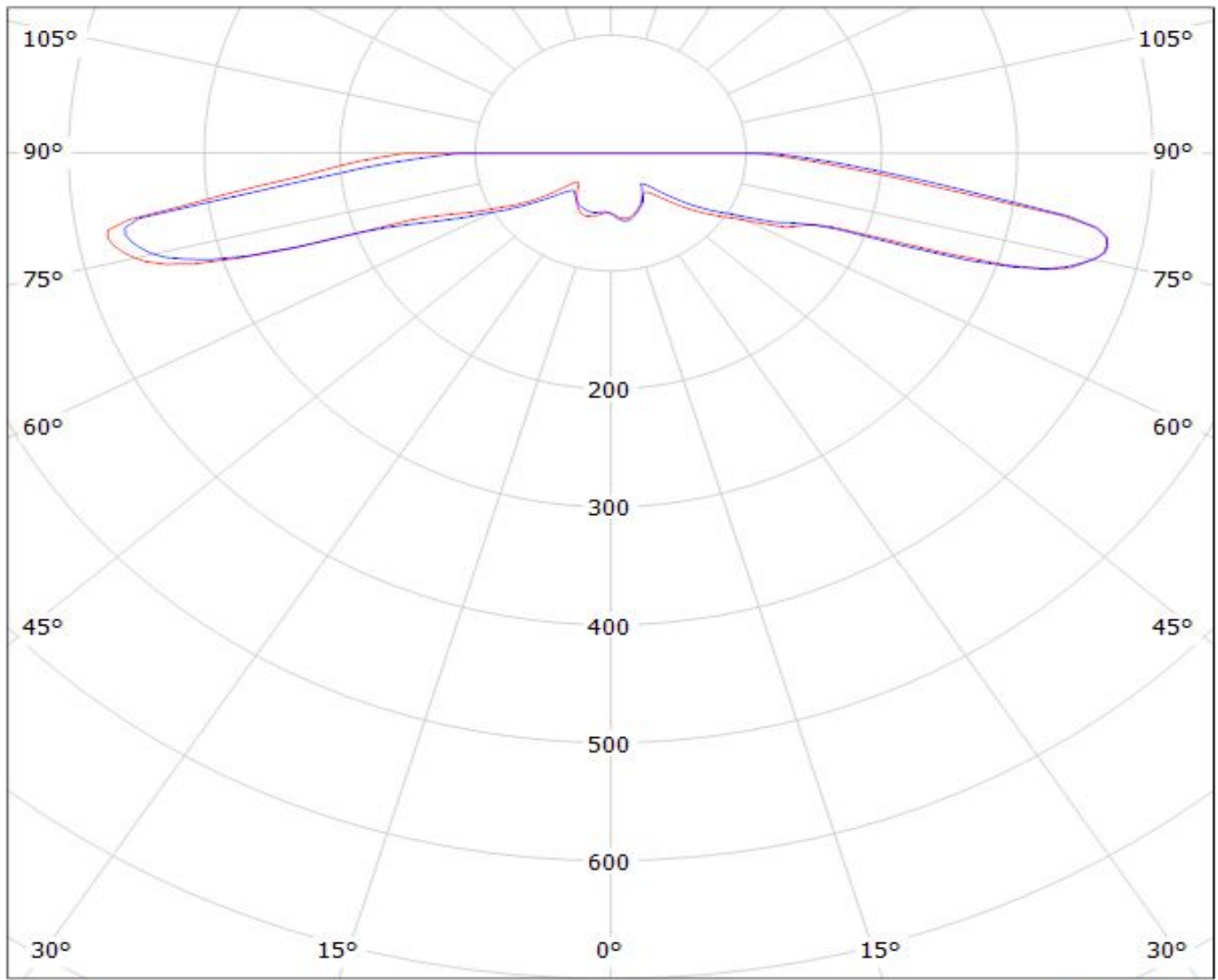
— C90 - C270

$\eta = 88\%$

LEDiL Oy C13055_EMMA-360_(XP-G2) Eff.89.6% / LDC (Polar)

Luminaire: LEDiL Oy C13055_EMMA-360_(XP-G2) Eff.89.6%

Lamps: 1 x XP-G2 (105.532lm@250mA)



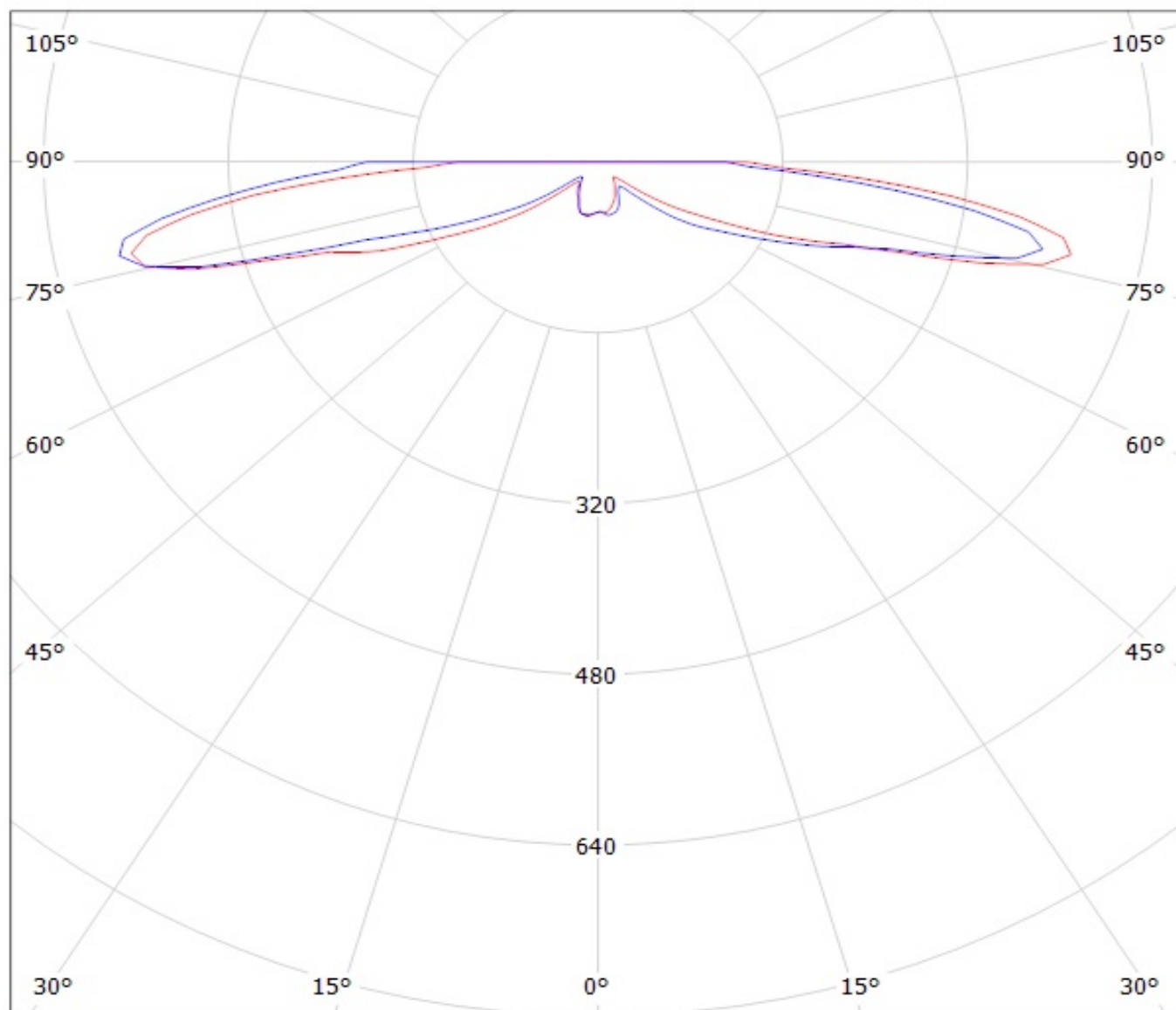
cd/klm

— C0 - C180

— C90 - C270

$\eta = 90\%$

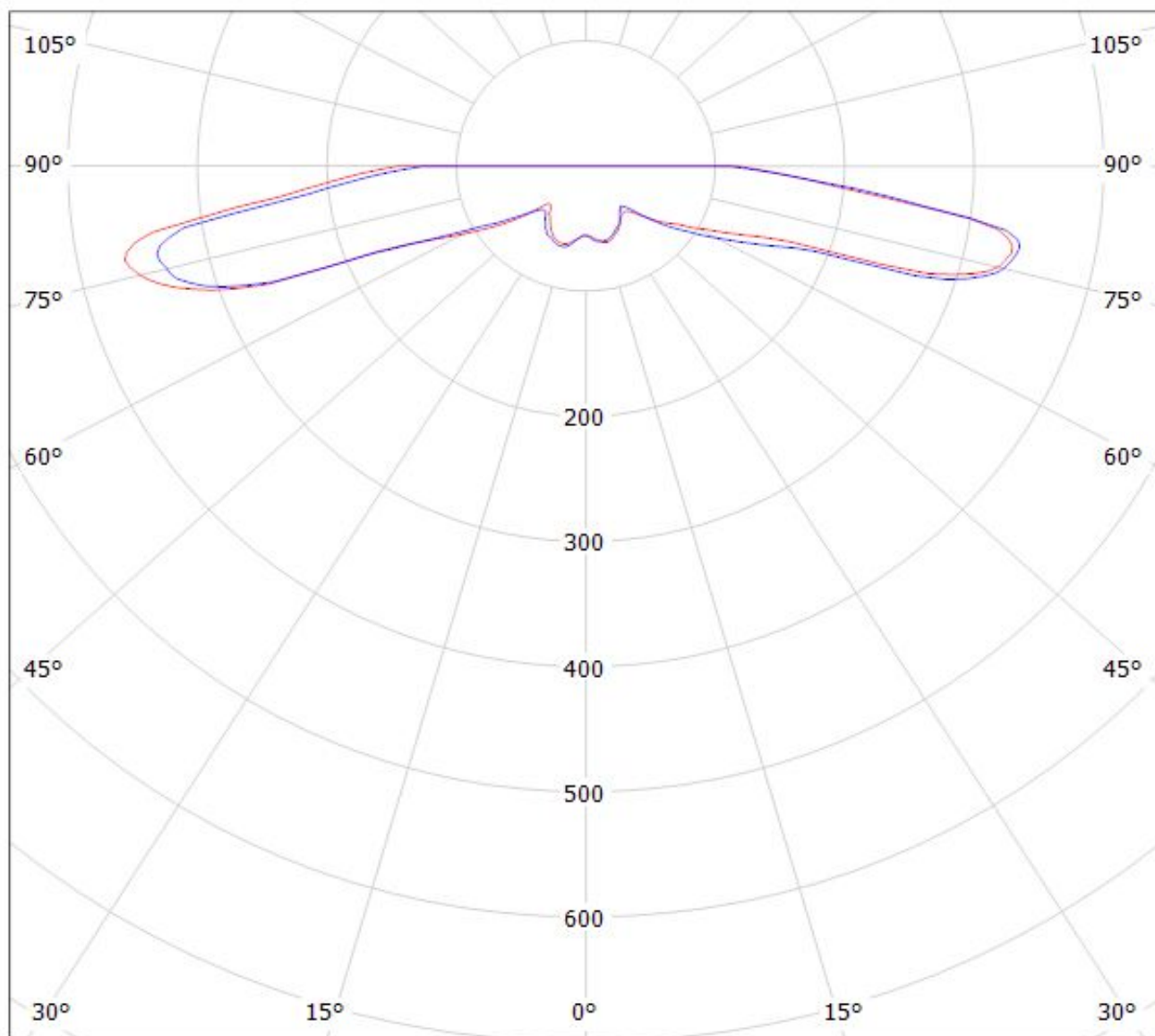
Luminaire: LEDil Oy C13055_EMMA-360_(XP-E2) Efficiency=94%
Lamps: 1 x Cree XP-E2 (XPE-BWT-L1-7B4-Q4-0-01) 84.8lm @ 250mA CCT=3200K P=0.8W I=250mA



cd/klm

— C0 - C180 — C90 - C270

Luminaire: LEDiL Oy C13055_EMMA-360_(Luxeon_A) Eff.92.5%
Lamps: 1 x Luxeon_A (64.956lm@250mA)

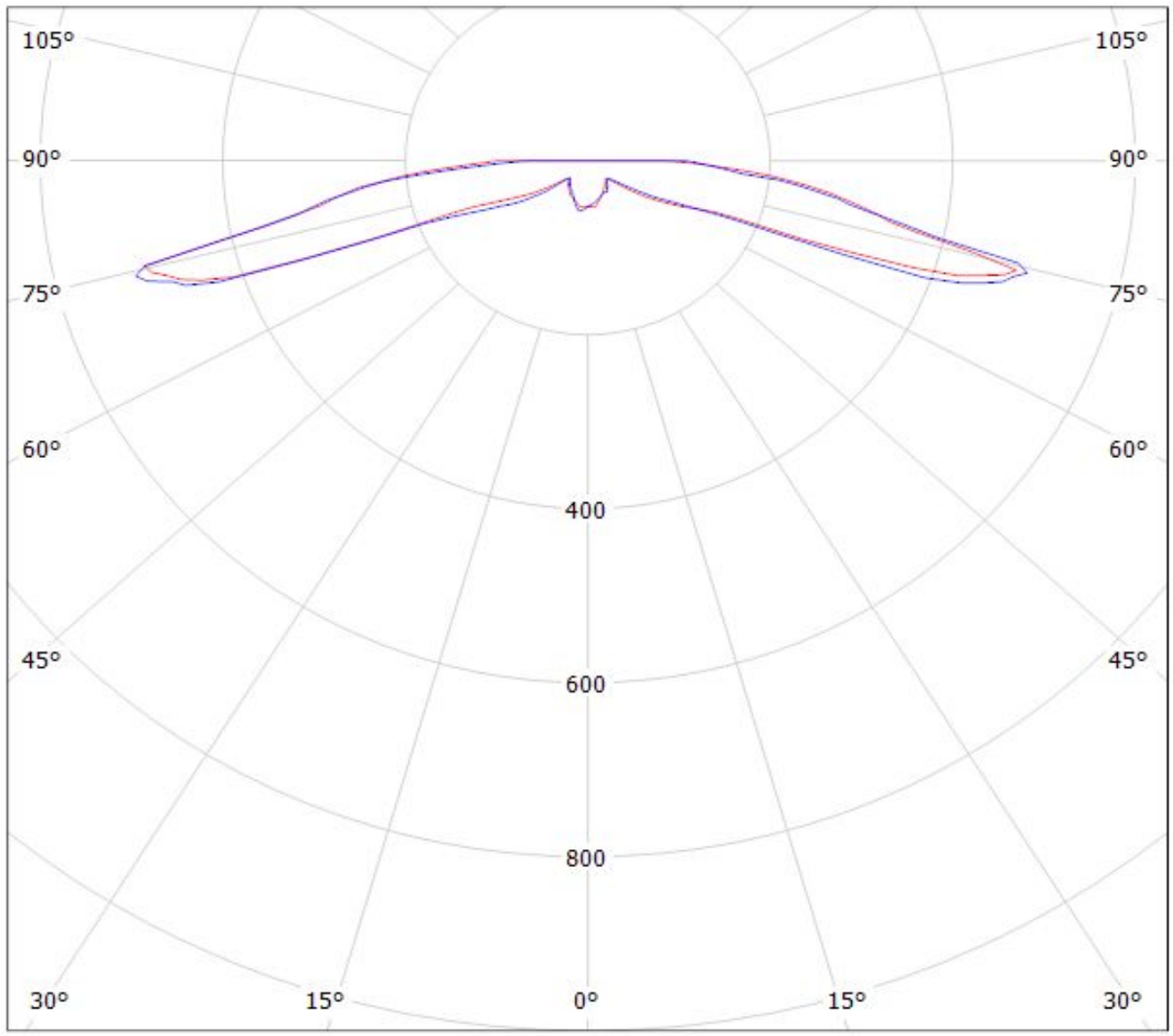


cd/klm

— C0 - C180 — C90 - C270

$\eta = 92\%$

Luminaire: LEDiL Oy C13055_EMMA-360_(Rebel) Eff.92.9%
Lamps: 1 x Rebel (81.7199lm@250mA)



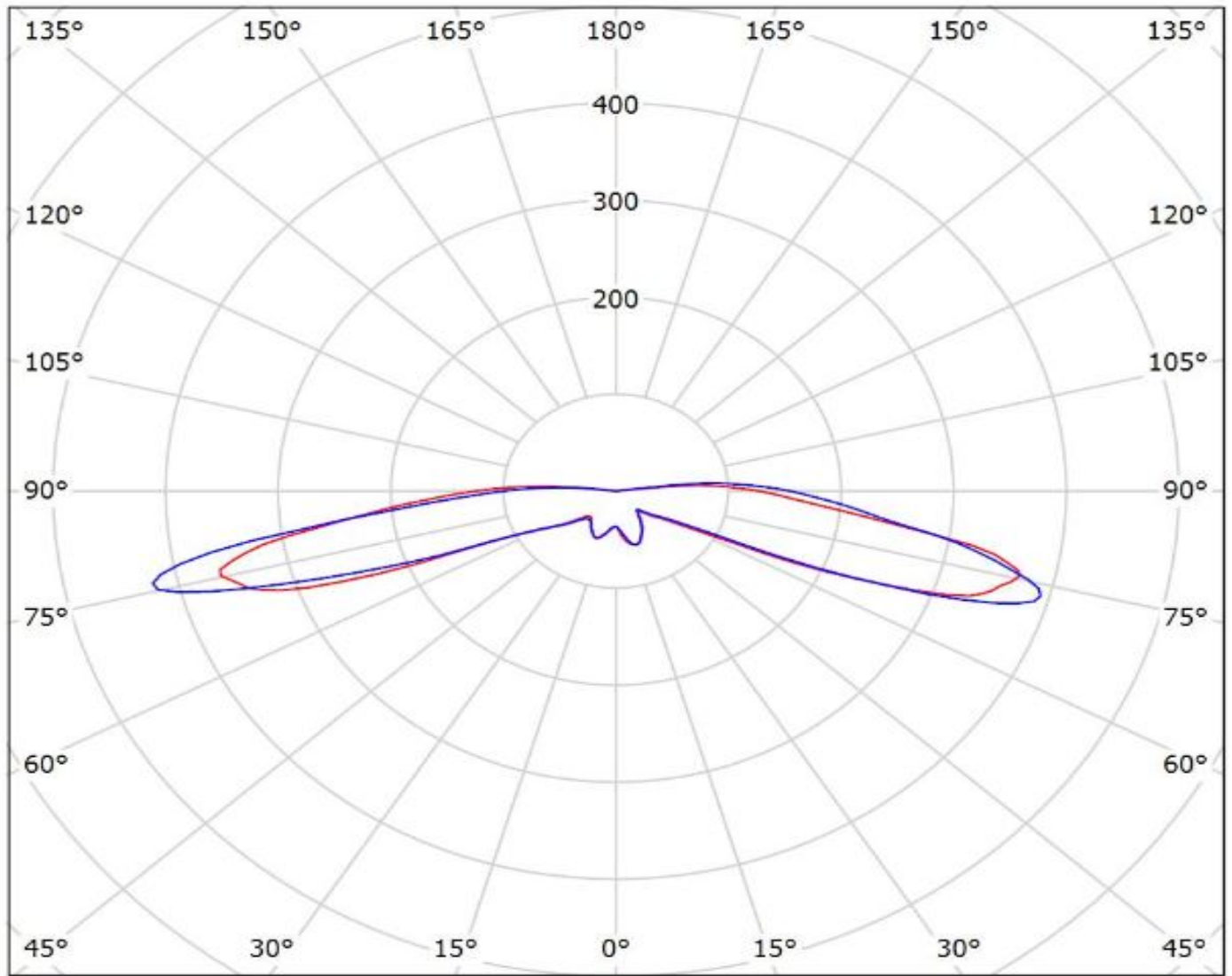
cd/klm
— C0 - C180 — C90 - C270

$\eta = 93\%$

Ledil C13055_EMMA-360_(LUXEON_3535_2D) / LDC (Polar)

Luminaire: Ledil C13055_EMMA-360_(LUXEON_3535_2D)

Lamps: 1 x LUXEON_3535_2D_(MXC8-PW40-0000)_74.5561lm@100mA_P=0.62W_I=0.1A



cd/klm

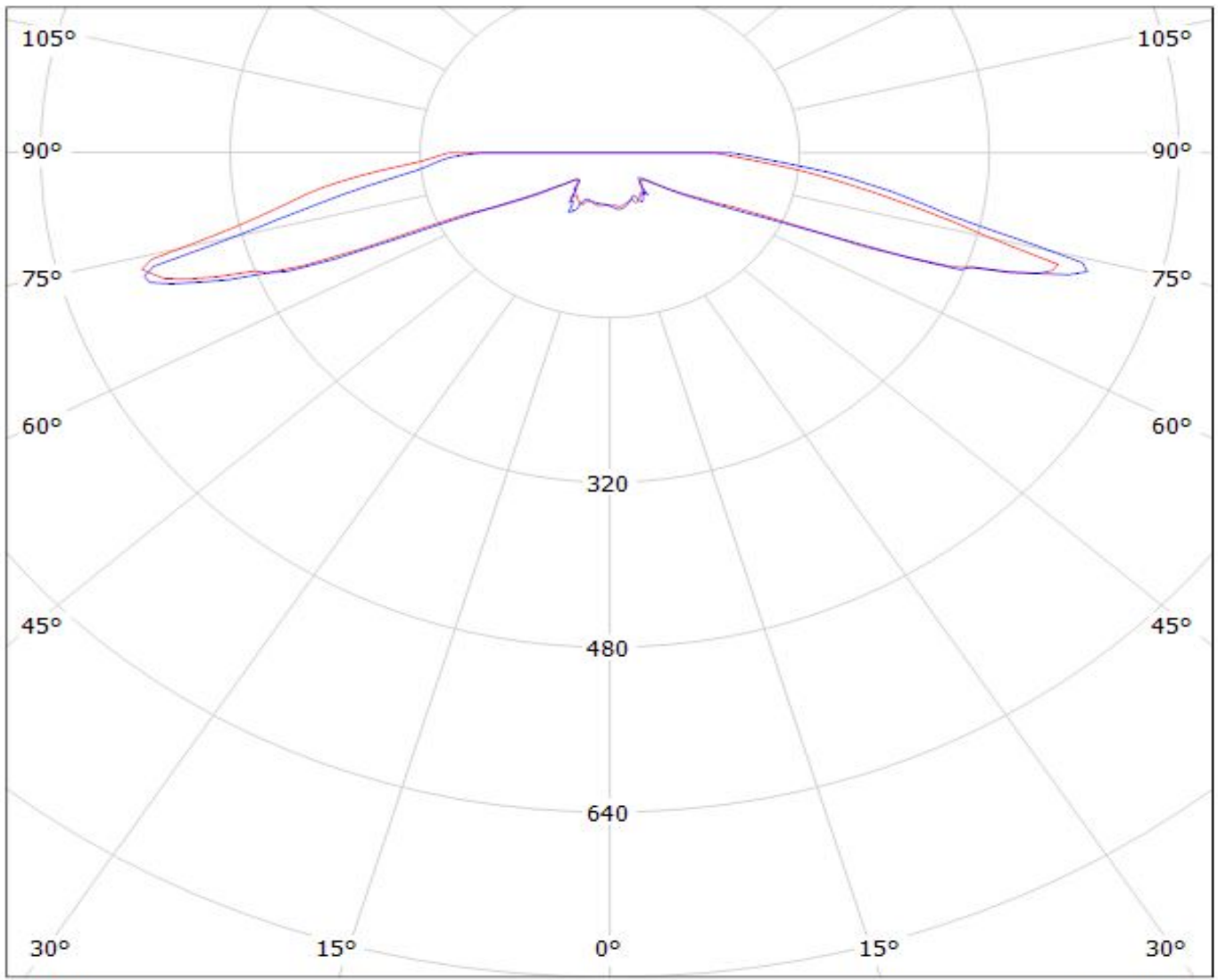
— C0 - C180 — C90 - C270

$\eta = 95\%$

LEDiL Oy C13055_EMMA-360_(NCS19) Eff.89.9% / LDC (Polar)

Luminaire: LEDiL Oy C13055_EMMA-360_(NCS19) Eff.89.9%

Lamps: 1 x NCS19 (87.3755lm@250mA)



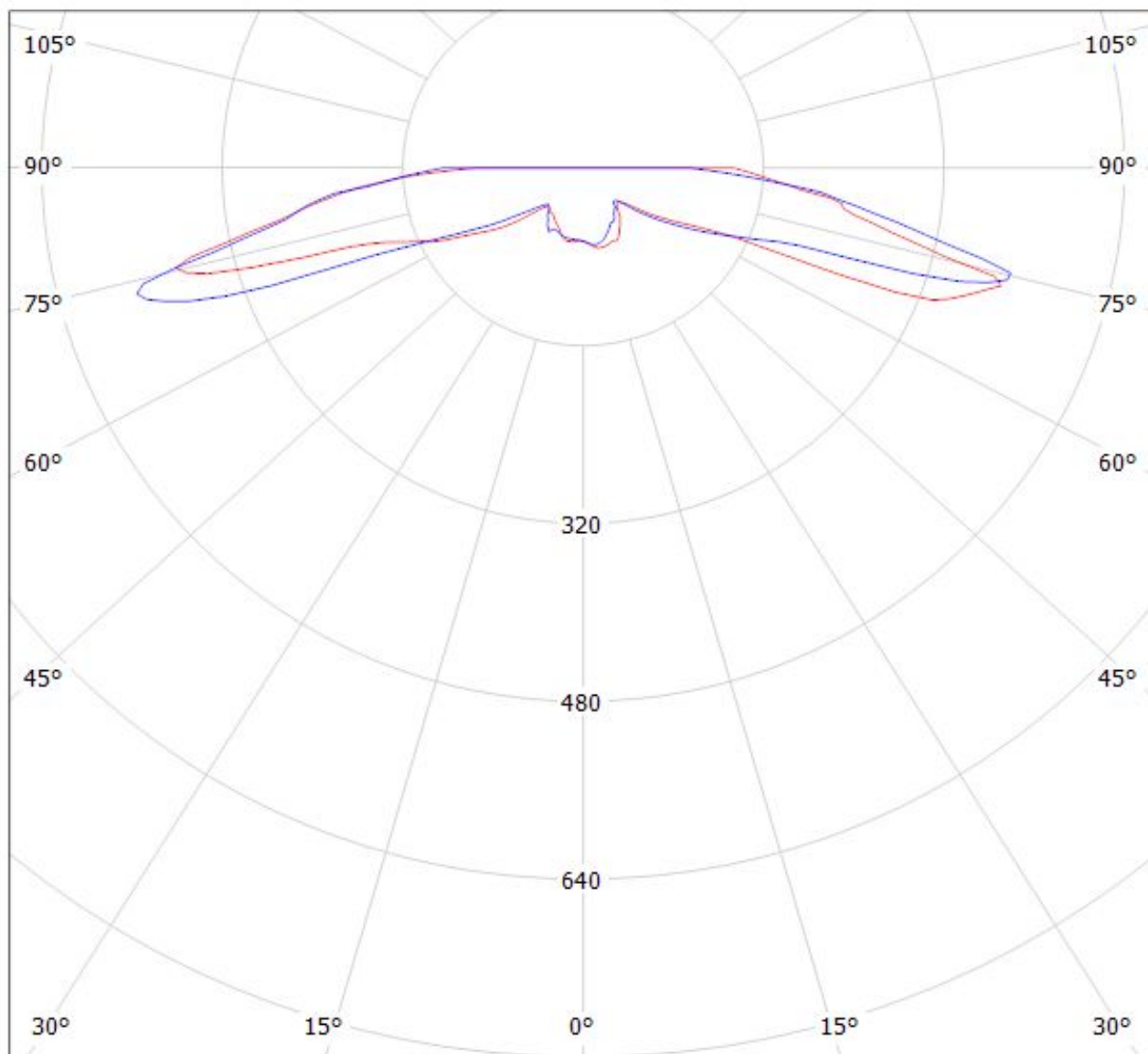
cd/klm

— C0 - C180

— C90 - C270

$\eta = 90\%$

Luminaire: LEDiL Oy C13055_EMMA-360_(SQ-EC) Eff.91.9%
Lamps: 1 x SQ-EC (67.7108lm@250mA)

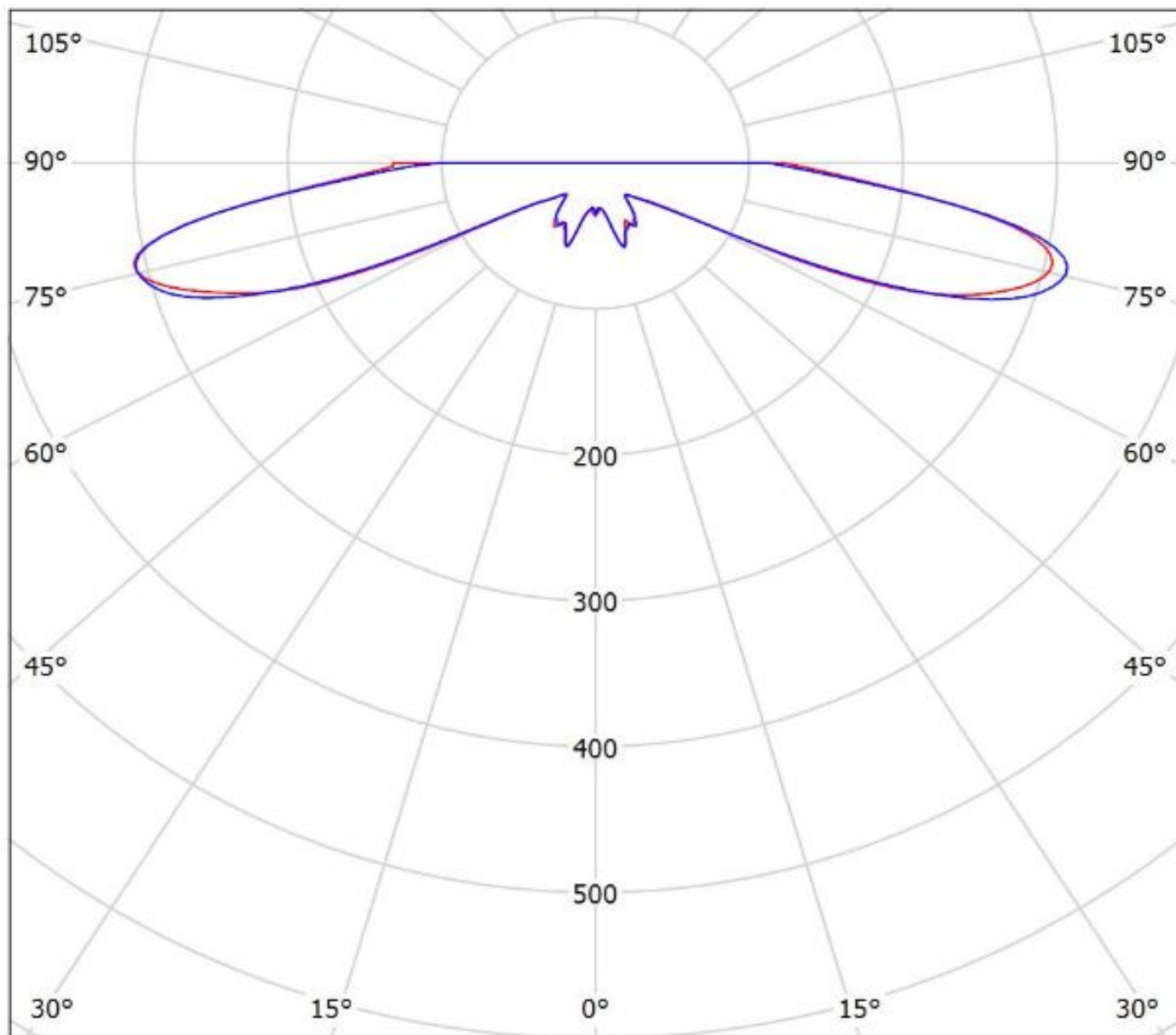


cd/klm

$\eta = 92\%$

— C0 - C180 — C90 - C270

Luminaire: Ledil Oy C13055_EMMA-360_SEOUL_Z8Y22+_SIMULATED
Lamps: 1 x SEOUL Z8Y22 Plus



cd/klm
— C0 - C180 — C90 - C270

$\eta = 86\%$

NOTE: The typical divergence will be changed by different color, chip size and chip position tolerance. The typical total divergence is the full angle measured where the luminous intensity is half of the peak value.