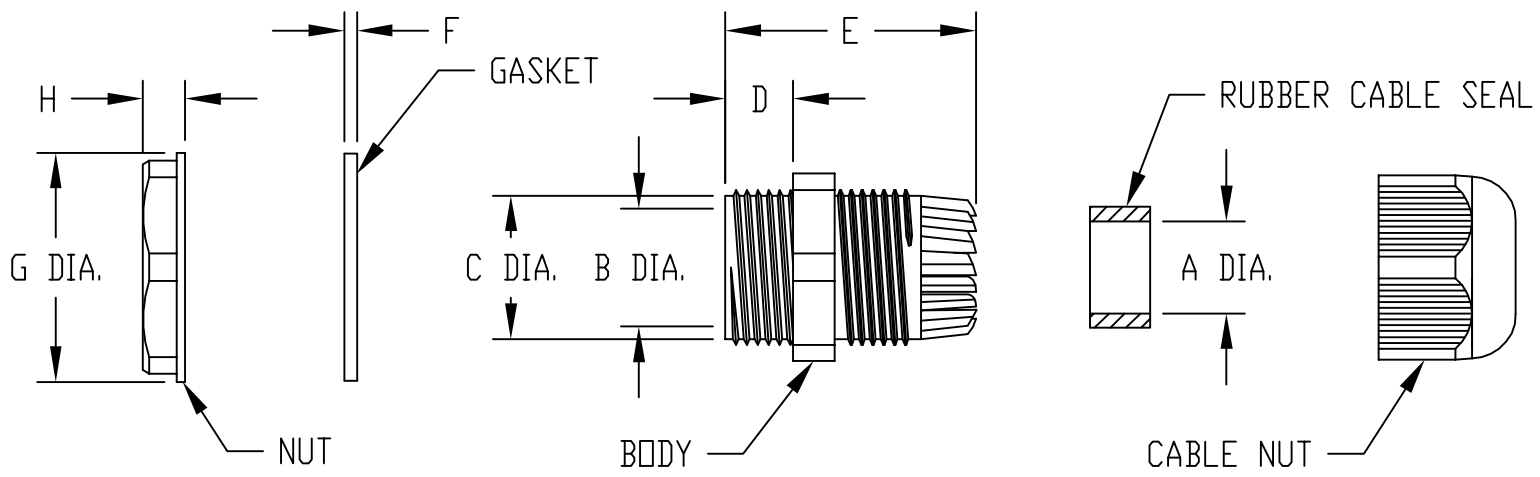


PART NAME	NEMA 4X GLAND	PART No.	NG-9511 TO NG-9517	REV. DATE	6-4-10
-----------	---------------	----------	--------------------	-----------	--------



MATERIAL: NYLON -66, UL-94V2 (NUT, BODY & CABLE NUT)
 NBR (N) RUBBER (GASKET & CABLE SEAL)
 COLOR: BLACK

PART NO.	MOUNT THREAD	CABLE RANGE (DIA.)	A	B	C	D	E	F	G	H
NG-9511	PG-7	0.118 - 0.169	0.197	0.315	0.488	0.315	1.102	0.039	0.827	0.209
NG-9512	PG-9	0.158 - 0.252	0.283	0.374	0.563	0.323	1.169	0.056	0.921	0.201
NG-9513	PG-11	0.197 - 0.295	0.374	0.512	0.717	0.323	1.236	0.058	1.047	0.205
NG-9514	PG-13.5	0.236 - 0.433	0.453	0.591	0.787	0.371	1.315	0.062	1.161	0.244
NG-9515	PG-16	0.394 - 0.512	0.524	0.669	0.878	0.382	1.425	0.062	1.303	0.250
NG-9516	PG-21	0.512 - 0.669	0.681	0.866	1.102	0.425	1.583	0.062	1.551	0.287
NG-9517	PG-29	0.709 - 0.945	0.957	1.181	1.449	0.433	1.772	0.062	1.972	0.315

PART NAME	ADAPTER BRACKET	PART No.	AB-2375	REV. DATE	
-----------	-----------------	----------	---------	-----------	--

MATERIAL: 16 GA. STEEL
 COLOR: BLACK

