

MATERIALS AND FINISHES

BODY BRASS
PLATED SEE TABLE

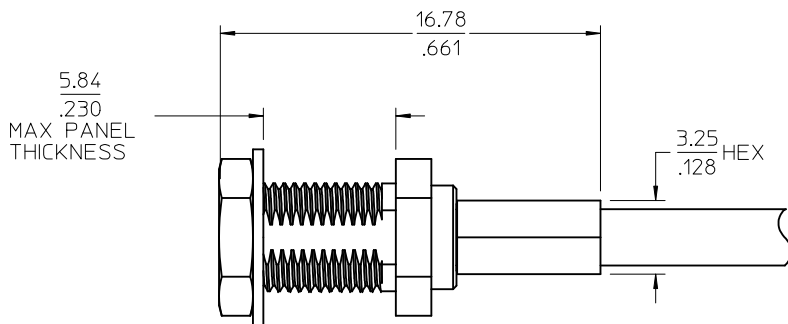
CRIMP TUBE BRASS
PLATED NICKEL

CENTER CONTACT BERYLLIUM COPPER
PLATED GOLD (SEE TABLE)

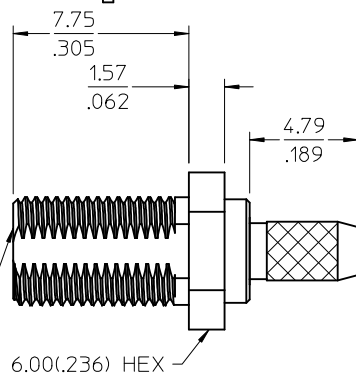
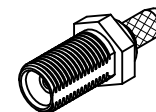
INSULATOR TEFLON

LOCKWASHER PHOSPHOR BRONZE
PLATED NICKEL

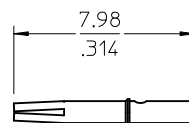
JAMNUT BRASS
PLATED NICKEL



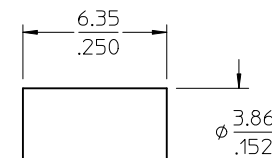
RECOMMENDED
STRIP DIMENSIONS



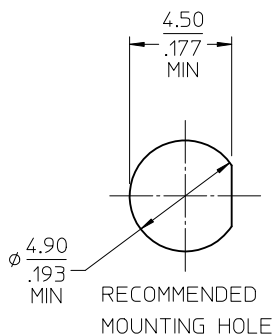
MCX JACK
INTERFACE



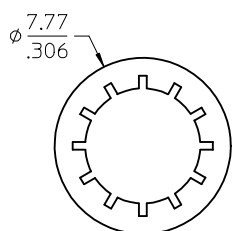
CONTACT



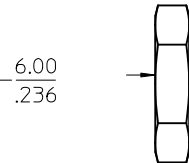
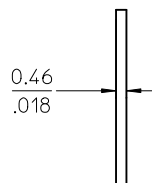
CRIMP TUBE



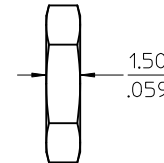
RECOMMENDED
MOUNTING HOLE



LOCKWASHER



JAMNUT



| | | | | |
|------------|--------------|------------|----------------|---------------|
| 73415-5233 | INCLUDED | GENERAL | 10 MICROINCHES | PLATED GOLD |
| 73415-5232 | NOT INCLUDED | GENERAL | 30 MICROINCHES | PLATED NICKEL |
| 73415-5231 | INCLUDED | SMALL TRAY | 10 MICROINCHES | PLATED NICKEL |
| 73415-5230 | INCLUDED | GENERAL | 10 MICROINCHES | PLATED NICKEL |
| PART NO. | HARDWARE | PACKAGING | FINISH CONTACT | FINISH BODY |

| | |
|---------------|-------------|
| CECC-22-220 | INTERFACE |
| SPECIFICATION | DESCRIPTION |

| | | |
|---|---------------------|------------|
| CHG: ADD PART NO. 73415-5233 PER PDR0912475 | EC NO: URF2011-0031 | 2010/07/19 |
| DRWN: YCHENG | CHKD: TEF | 2004/12/13 |
| APPR: M HUANG | | 2010/07/22 |
| REV | DESCRIPTION | |
| B5 | | |

| | |
|-----------------|---------------------------------------|
| QUALITY SYMBOLS | GENERAL TOLERANCES (UNLESS SPECIFIED) |
| ▽=0 | mm INCH |
| ▽=0 | 4 PLACES ± --- ± --- |
| | 3 PLACES ± --- ± --- |
| | 2 PLACES ± --- ± --- |
| | 1 PLACE ± --- ± --- |
| | ANGULAR ± 2 ° |

| | | | |
|-----------------|--------------|-----------------------|------------------------|
| DIMENSION STYLE | SCALE | DESIGN UNITS | THIRD ANGLE PROJECTION |
| MM/IN | | METRIC | |
| DRAWN BY | DATE | TITLE | |
| SSS | 2004/12/10 | MCX JACK STR, RG316 | |
| CHECKED BY | DATE | BULKHEAD MOUNT 50 OHM | |
| TEF | 2004/12/13 | MCX-JC | |
| APPROVED BY | DATE | | |
| JDW | 2004/12/13 | | |
| MATERIAL NO. | DOCUMENT NO. | | |
| SEE TABLE | SD-73415-523 | | |
| SIZE | | | |
| C | | | |

| | |
|--|--|
| DRAFT WHERE APPLICABLE MUST REMAIN WITHIN DIMENSIONS | THIS DRAWING CONTAINS INFORMATION THAT IS PROPRIETARY TO MOLEX INCORPORATED AND SHOULD NOT BE USED WITHOUT WRITTEN PERMISSION |
|--|--|