

5

4

3

2

1

受控 CONTROLLED DOCUMENT					
编号 P/N	32-2900-CUST	版本 Rev	01	日期 Rel'd Date	SEP 17,09

DRAWING NO.
32-2900-XX-CUST(SEE TABLE I)

REVISIONS

01	OFFICIAL RELEASE			
	08-05-09	Y U	Y U	T H

Betty 2009.09.16 14:02:09
+08:00

D



Description: See Table I
 Part No: See Table I
 Application: RJ45 Boot
 Crimp Tool: N/A
 Impedance: N/A
 Frequency Range: N/A
 Material: Boot PVC
 RoHS Compliance: Yes
 Technical Detail: N/A

C

B

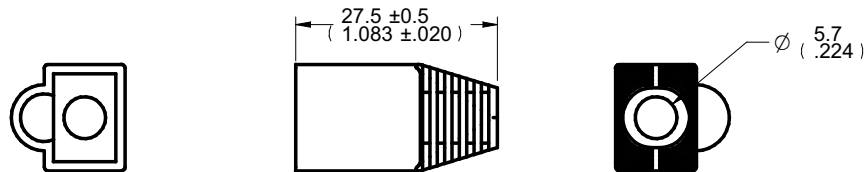
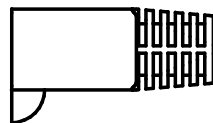


TABLE I

PART NUMBER	DESCRIPTION
32-2900WH	RJ45 MOD PLUG RND BOOT,WHITE
32-2900RE	RJ45 MOD PLUG RND BOOT, RED
32-2900GN	RJ45 MOD PLUG RND BOOT, GREEN
32-2900BU	RJ45 MOD PLUG RND BOOT,BLUE
32-2900BK	RJ45 MOD PLUG RND BOOT,BLACK

CUSTOMER COPY

A



DIM OUTLINE

TOLERANCE UNLESS OTHERWISE SPECIFIED		DRAWN BY IVON.W	DATE 08-05-09
DECIMALS	mm	CHECKED BY IVON.W	DATE 08-05-09
X	± 0.5	APPROVED BY THOMAS	DATE 08-05-09
X.X	± 0.3	U/M	mm
X.XX	± 0.1		
ANGLES	± 0.5°		

EMERSON
Network Power

Connectivity Solutions

TITLE
RJ45 MOD PLUG RND BOOT,WHITE(SEE TABLE I)

SHEET 1 OF 1 DRAWING NO. 32-2900-XX-CUST (SEE TABLE I) SIZE A

THIS DRAWING WAS PRODUCED BY COMPUTER, DO NOT SCALE DRAWING OR UPDATE MANUALLY.

5

4

3

2

1