

Technical specification:

Rated voltage: 30 V AC / DC
IEC 61076-2-104

Current rating: 3 A at 40°C
IEC 61076-2-104

Insulation resistance: >=100 MΩ
IEC 60512

Pollution degree: 3/2
IEC 60664-1

Degree of protection: IP 67, in mated condition
IEC 60529

Temperature range: -30°C ... +80°C
EN 60512-11-10
-40°C ... +85°C
EN 60512-11-4

Mating cycles: >=100
IEC 60512-9a

Materials:

Contact: CuZn, Ni b / Au 0,2 gal.

Contact carrier: PA, UL 94 V-0

Sealing: FPM

Counternut: CuZn, Ni

Socket housing: CuZn, Ni

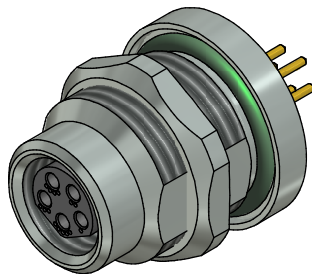
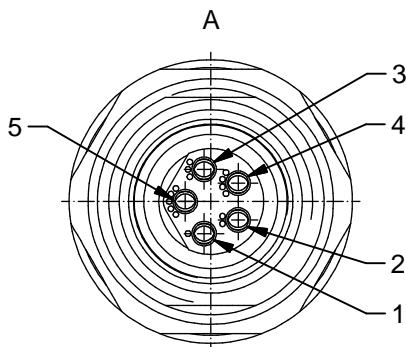
Grouting: Polyurethane-resin, UL 94

Installation specification:

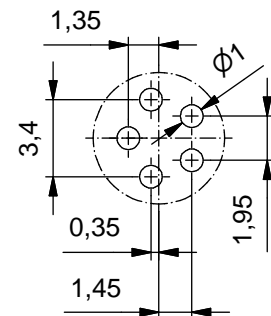
Recommended torque: 0,6-0,8 Nm

Conec installation tool: Torque wrench: 36-000200
Insert across flats 14: 36-000370

Installation hole: See fig.2 42K1A1119



Pin layout PCB

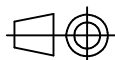


Part-No.:	Description:	Pos	Length L:
42-01145	SAL - 8B - FKH5 - P5,5	5	5,5mm

DO NOT ALTER CAD DRAWING BY HAND

RoHS & REACH compliant

Index: a 21.03.16 MG Ä6018
Contact carrier: material information extended, installation hole removed, reference to 42K1A1119 added



dim. in mm

	date	name
drawn	12.08.13	Christen
appd.	12.08.13	Mankopf

general tolerance: 0 ± 0,50mm
0,0 ± 0,25mm
0,00 ± 0,10mm
x ± 5°



title:
Female socket M8x1 with dip solder, backmounting

dwg no:
42K1A527

part no: see table

THIS DRAWING MAY NOT BE COPIED OR REPRODUCED IN ANY WAY, AND MAY NOT BE PASSED ON TO A THIRD PARTY WITHOUT WRITTEN PERMISSION. OWNERSHIP AND COPYRIGHT OF CONEC GmbH