

HANTRONIX

HDA570ST-VH Evaluation Kit

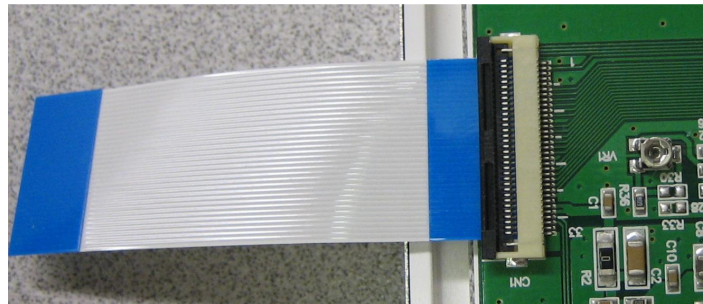
** Module Assemble Instructions **

Part List

Item	Amulet Part Number	Qty	Description
1	3036-0007-01HT	1	CBC-2 5.7" EVAL PCB
2	0904-0375	4	Spacer, Nylon, .375 OD
3	0900-0004-58	4	Screw, #4 x5/8", Pan Head
4	2002-0033-02	1	33-pin Display Cable
5	0310-0005-01	1	5V 1000mA Power Adapter
6	0300-0105	1	Cable, USB Mini
7	7010-0001	1	Stylus
8	0360-0008	1	GEM Quick Start Guide
9	UHT-CS2	1	CD
10	0309BR-B1K	1	Sale Brochure HMI Solutions
11	0309CC-B1K	1	Sale Brochure Color Chip

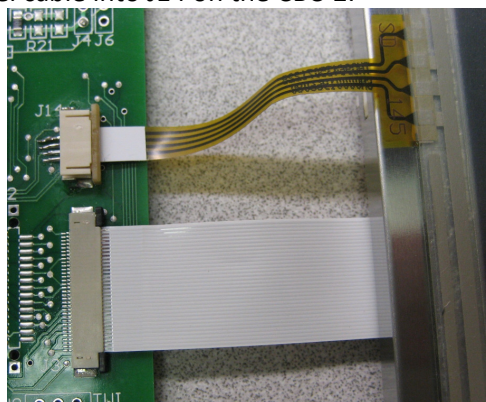
Assembly Instructions

1. Connect one end of the 33-pin display cable 2002-0033-02 into the connector of the display.



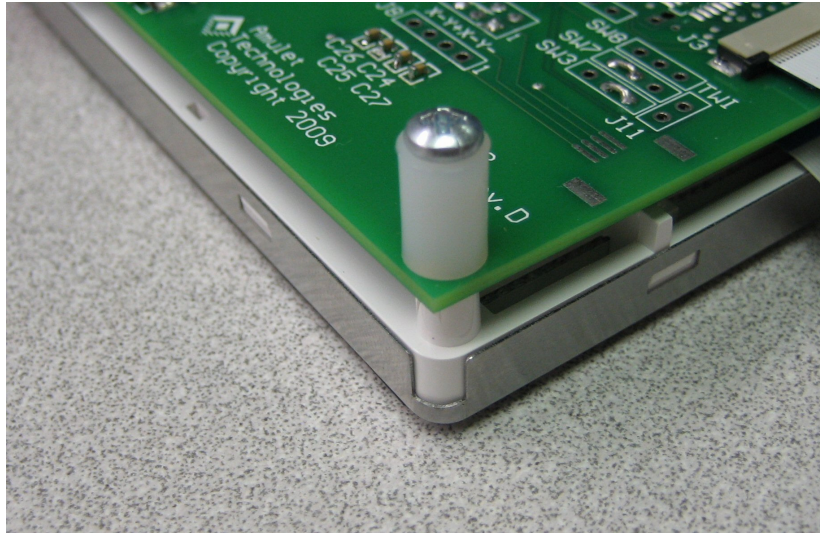
Make sure the non-conductive side is facing away from the display.

2. Turn the display over and connect the other end into J3 on the CBC-2 PCB.
Connect the touch panel cable into J14 on the CBC-2.



HANTRONIX

3. Connect the backlight connector into the backlight connector on the back of CBC-2 PCB.
4. Place a spacer 0904-0375 over each of the Screws 0900-0004-58.
5. Thread the screw assembly through one of the holes on CBC-2 PCB and tighten it down. Repeat this for the other three mounting holes.



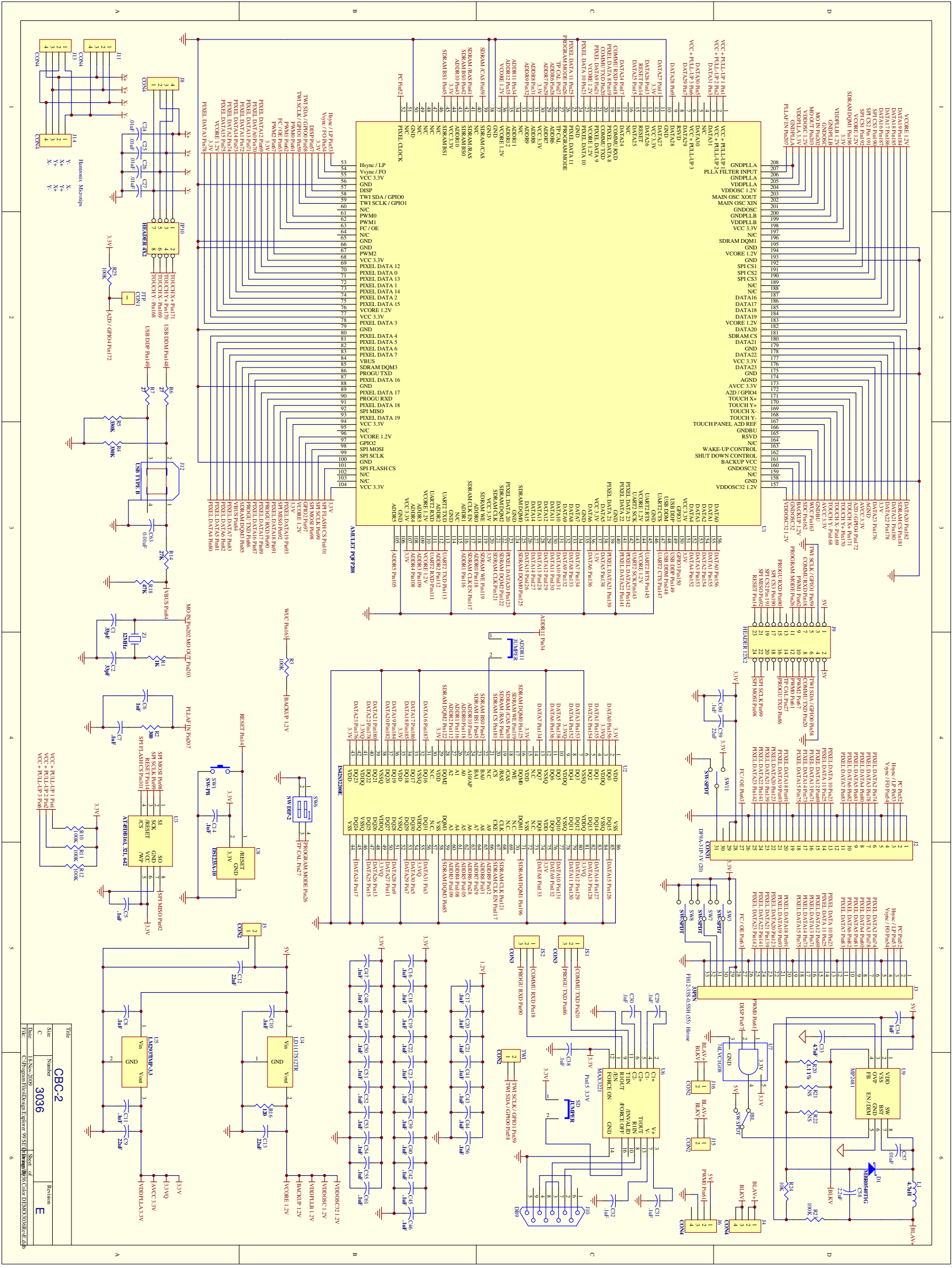
6. Plug in the 5V power adapter .
7. Confirm the display and touch panel work correctly.
8. If the display does not work check the display connection.

Questions? Email or call Amulet at 1-888-374-8688



Tel (408) 374-4956
Fax (408) 374-4941
<http://www.AmuletTechnologies.com>
Sales@AmuletTechnologies.com
Support@AmuletTechnologies.com
700 Gale Drive, Suite 190
Campbell, CA 95008 USA

0360-0007
Rev XC 9/21/09



Title	CBC-2
Number	3036
Revision	E
Date	18-Nov-2009
File	C:\Program Files\Autodesk\Inventor 2010\Projects\CBC-2\CBC-2.dwg