

DETAILS

Product Number	C12622_HELENA-A
Family	Helena
Type	Lens
Color	clear
Diameter	72,8 mm
Height	11 mm
Style	round
Optic Material	PC
Holder Material	
Fastening	
Status	production ready
ROHS Compliant	Yes
Date Updated	24/06/2013



OPTICAL PROPERTIES

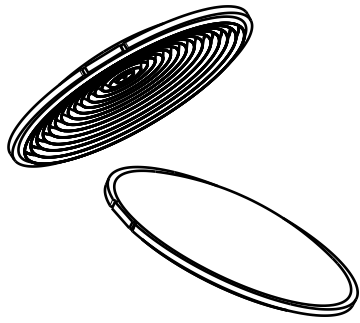
LED	Viewing Angle	Light Beam	Efficiency	cd/lm	Connector
LUXEON K16	22 deg	Medium	67 %	3.000	-
LUXEON K12	19 deg	Medium	68 %	4.000	-
LUXEON K8	15 deg	Medium	69 %	5.000	-

D

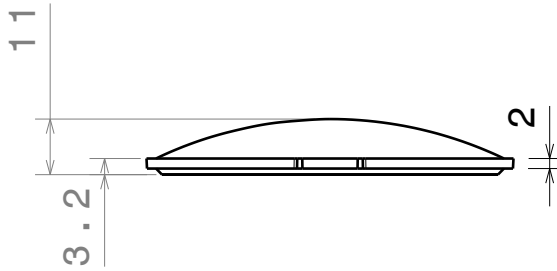
C

B

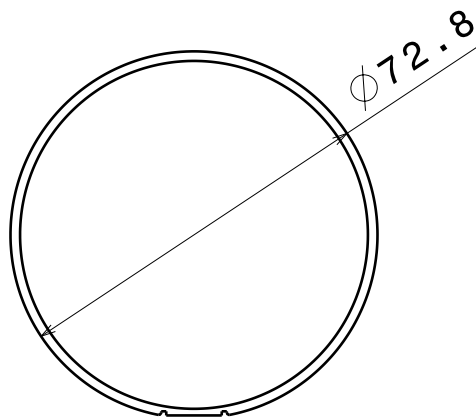
A



Isometric view
Scale: 1:2



Front view



Top view

Tolerances for dimensions:
 0-20mm tolerance value $\pm 0.1\text{mm}$
 21-45mm tolerance value $\pm 0.2\text{mm}$
 46-90mm tolerance value $\pm 0.3\text{mm}$
 91-100mm tolerance value $\pm 0.4\text{mm}$
 101-mm tolerance value $\pm 0.5\text{mm}$

This drawing is our property.
 It can't be reproduced
 or communicated without
 our written agreement.



Ledil Oy
 Salorankatu 10
 FIN 24240 SALO
 Finland

DRAWING TITLE

Datasheet C12622_HELENA-A Lens

DRAWN BY

mav

DATE

23.02.2012

CHECKED BY

pk

DATE

23.02.2012

SIZE

A4

DRAWING NUMBER

C12622

REV

1

DESIGNED BY

-

DATE

-

SCALE

1:1

WEIGHT (g)

SHEET

1/1

D

A

4

4

3

3

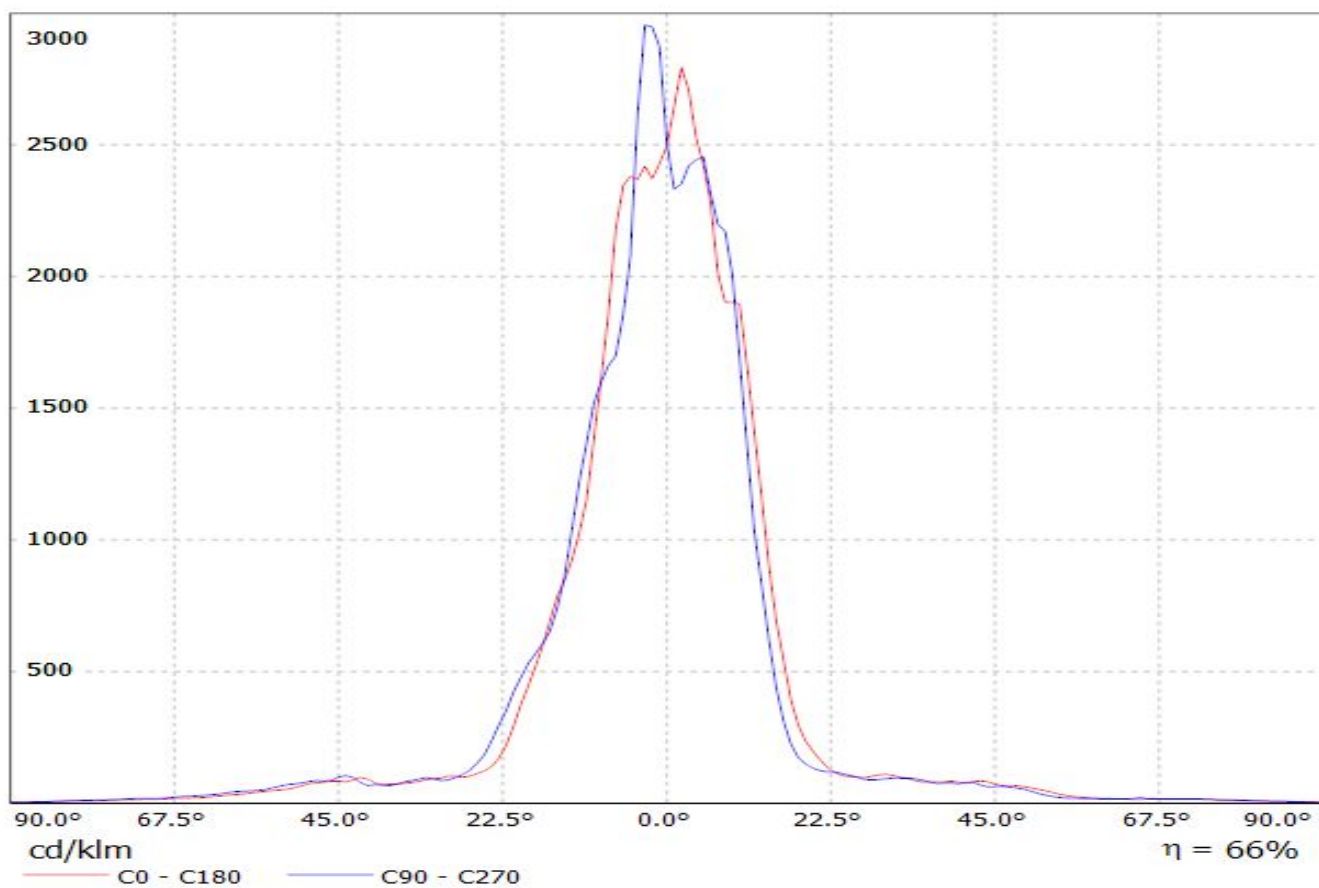
2

2

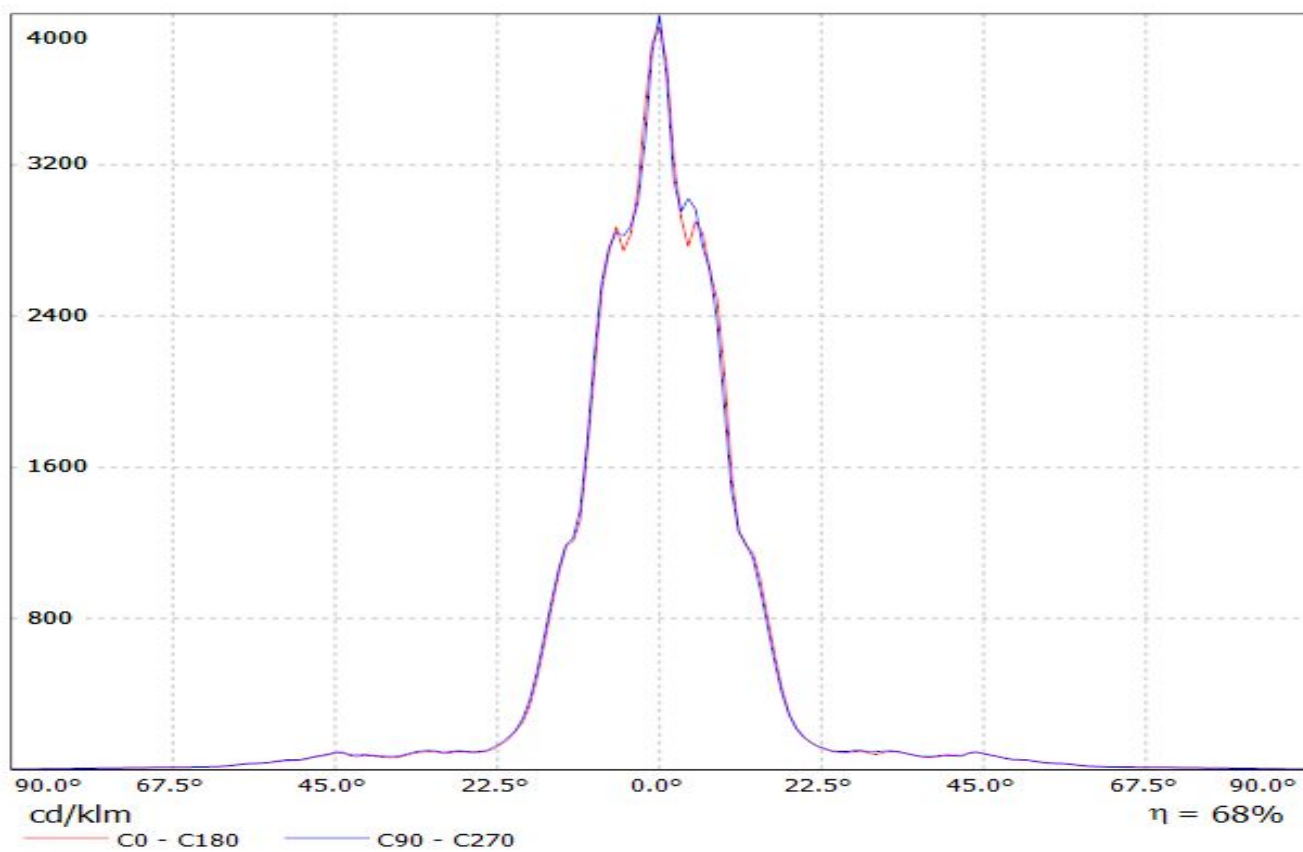
1

1

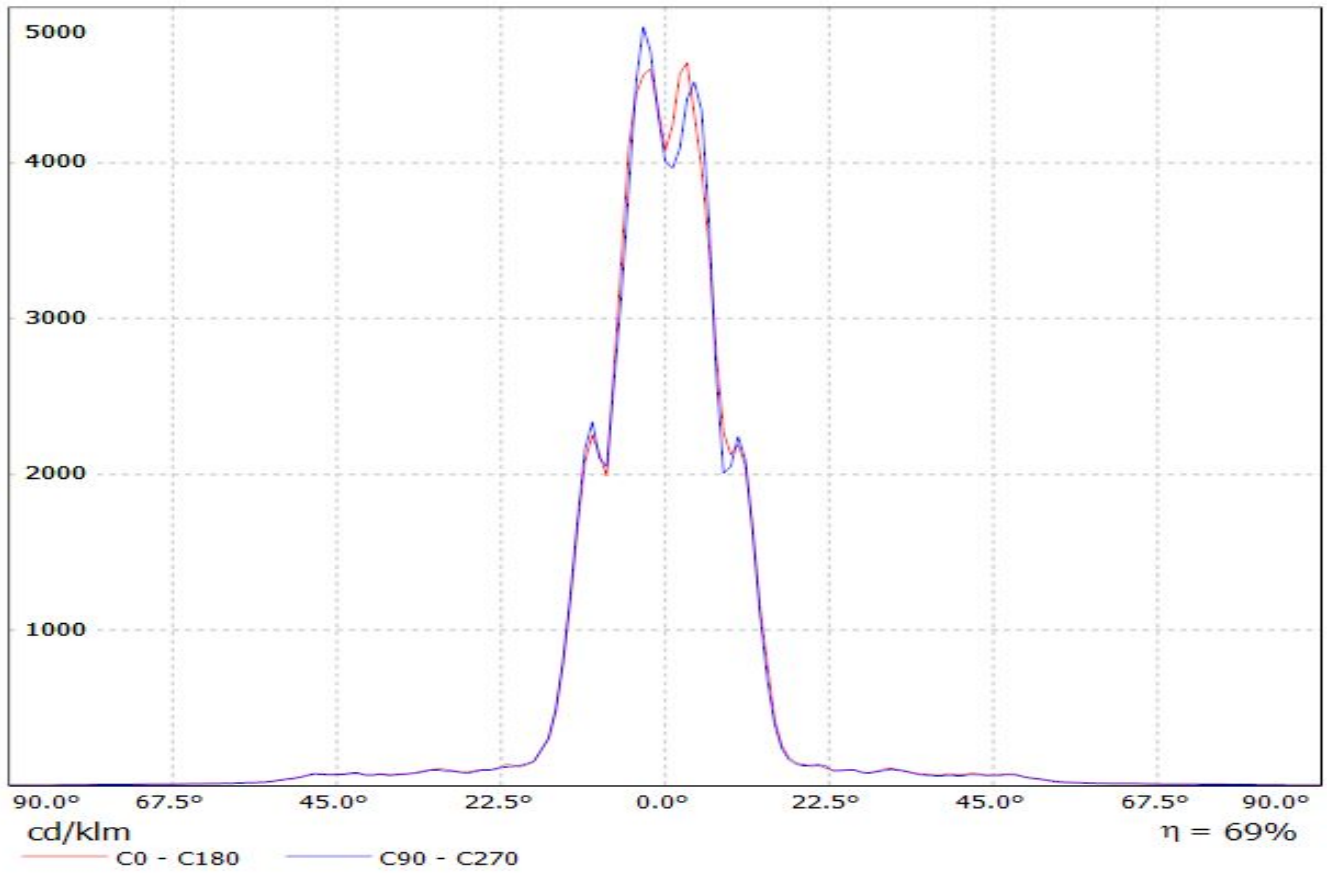
Luminaire: LEDiL Oy C12622_HELENA-A_(LUXEON_K16) Eff.66.5%
Lamps: 1 x LUXEON K16 (1196.37lm@250mA)



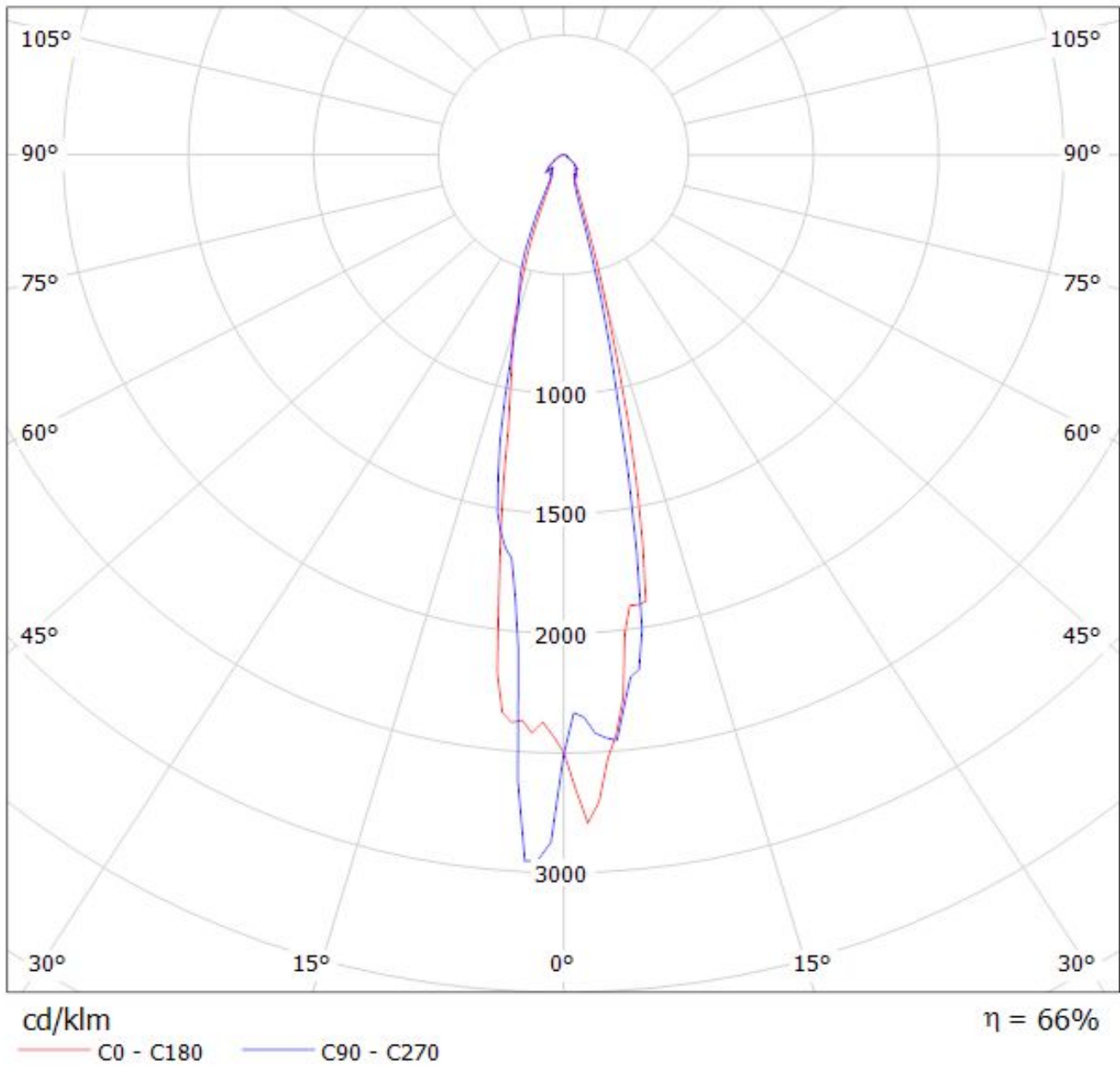
Luminaire: LEDiL Oy C12622_HELENA-A_(Luxeon_K12) Eff. 67,6%
Lamps: 1 x Luxeon K12 (797lm@250mA)



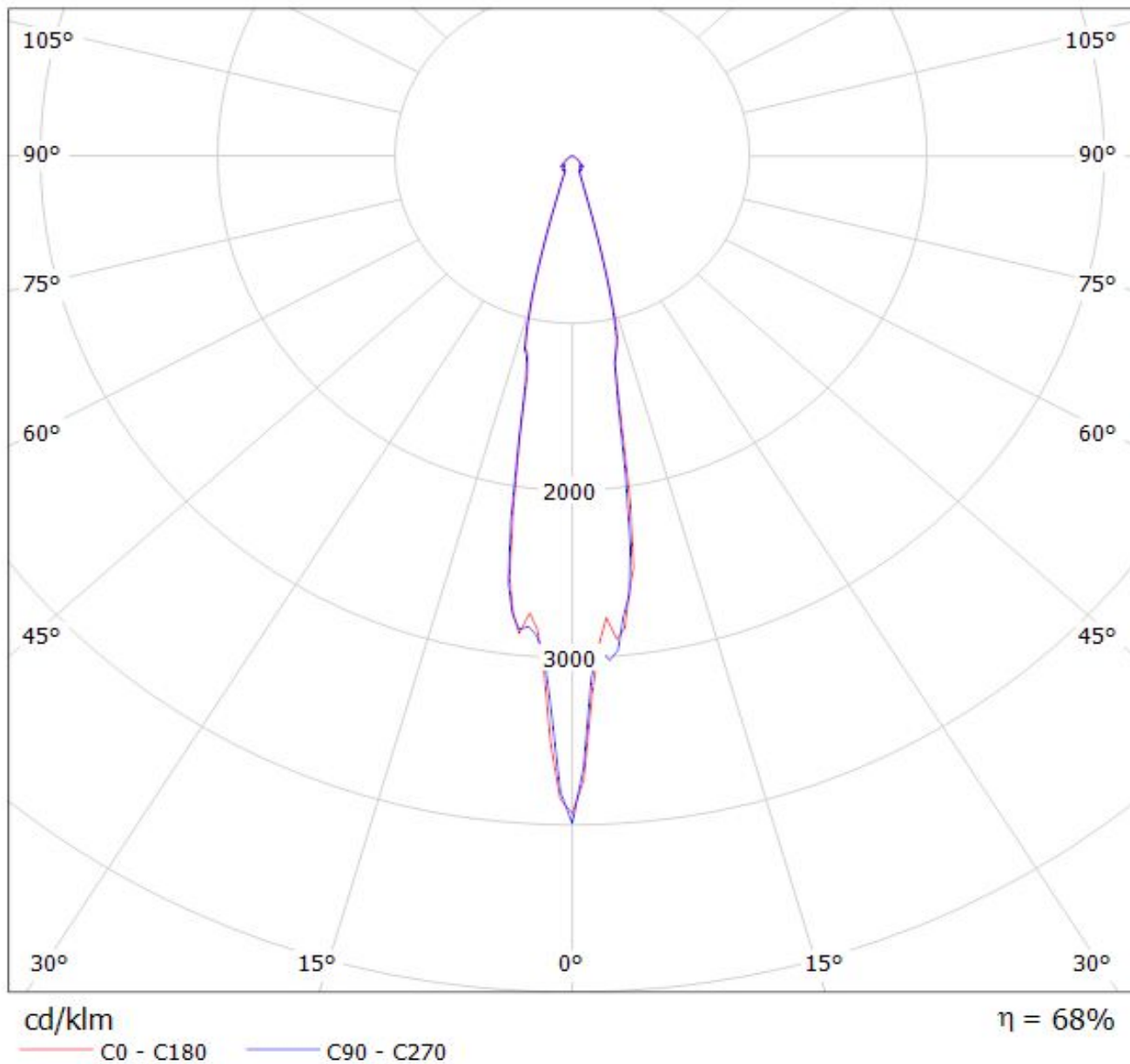
Luminaire: LEDiL Oy C12622_HELENA-A_(Luxeon_K8) Eff 69,2%
Lamps: 1 x Luxeon K8 (609lm@250mA)



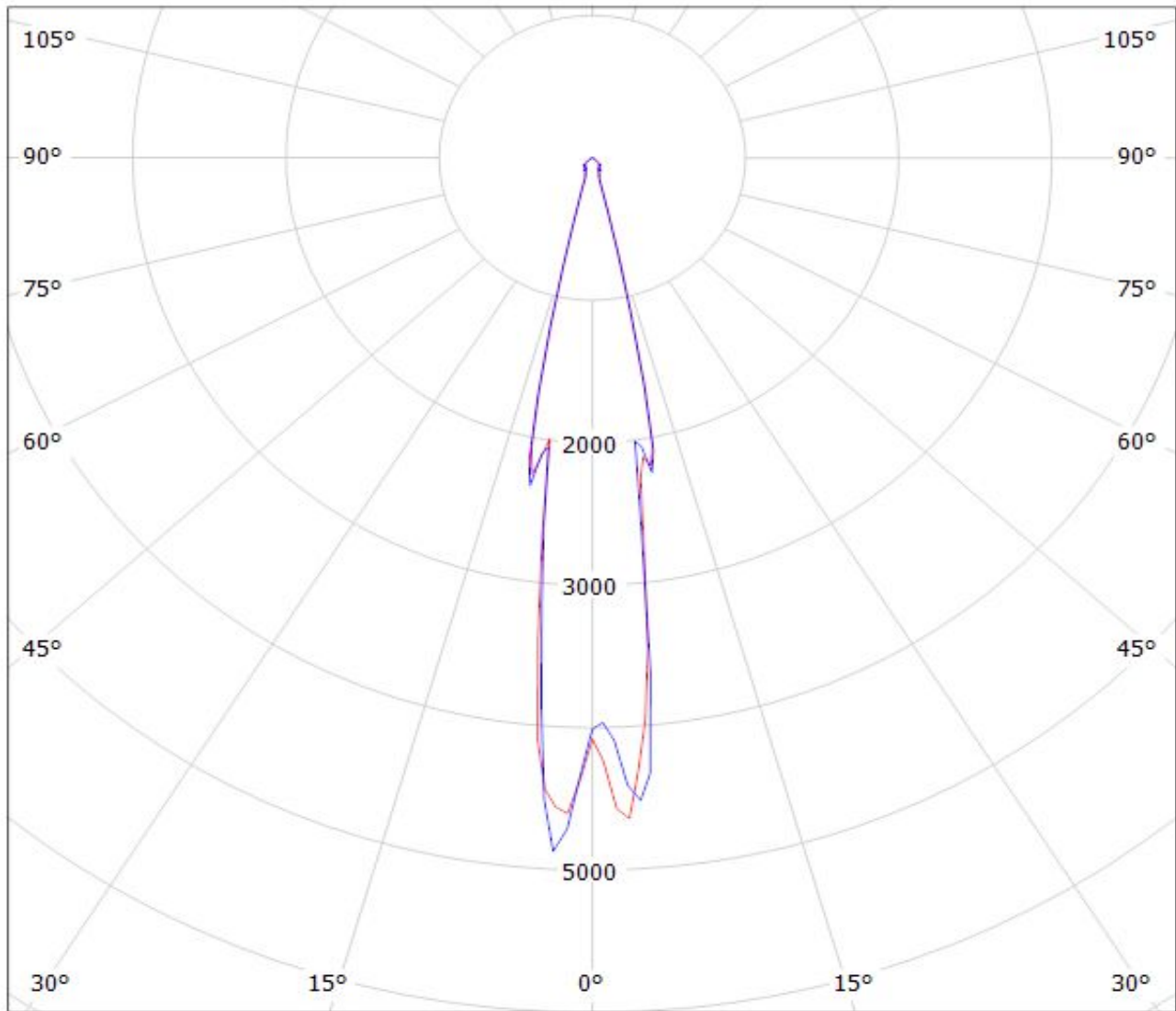
Luminaire: LEDiL Oy C12622_HELENA-A_(LUXEON_K16) Eff.66.5%
Lamps: 1 x LUXEON K16 (1196.37lm@250mA)



Luminaire: LEDiL Oy C12622_HELENA-A_(Luxeon_K12) Eff. 67,6%
Lamps: 1 x Luxeon K12 (797lm@250mA)



Luminaire: LEDiL Oy C12622_HELENA-A_(Luxeon_K8) Eff 69,2%
Lamps: 1 x Luxeon K8 (609lm@250mA)



cd/klm

— C0 - C180 — C90 - C270

$\eta = 69\%$

NOTE: The typical divergence will be changed by different color, chip size and chip position tolerance. The typical total divergence is the full angle measured where the luminous intensity is half of the peak value.