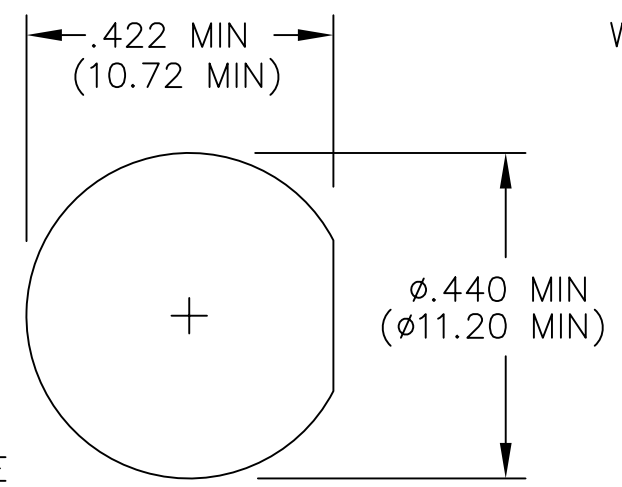
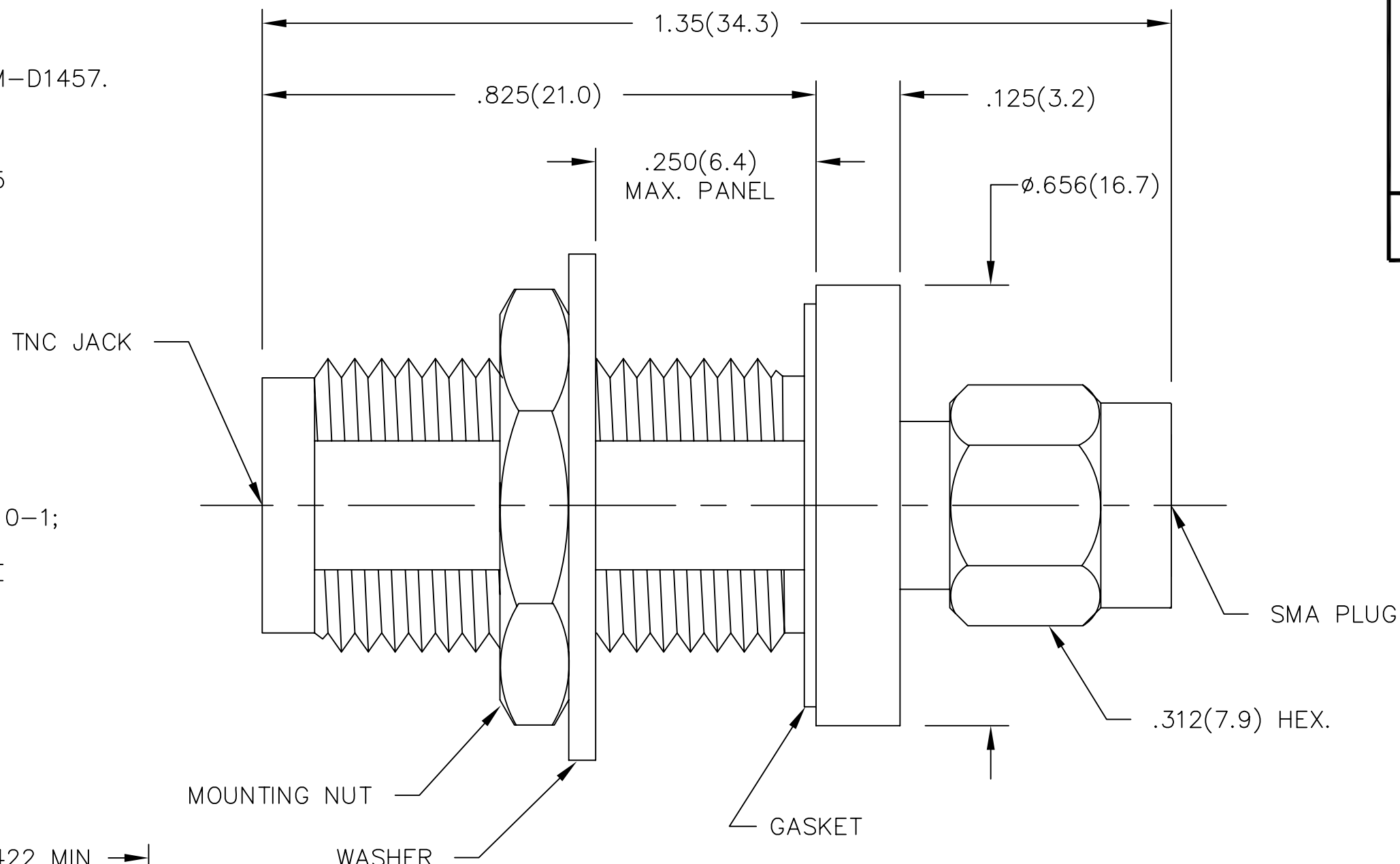


- NOTES:
- 1.0 MATERIALS:
 - 1.1 HOUSING, NUTS & WASHER: STAINLESS STEEL PER ASTM-A582, TYPE 303.
 - 1.2 CENTER CONTACT: BERYLLIUM COPPER ROD ALLOY C172, PER ASTM-B196.
 - 1.3 DIELECTRIC: PTFE FLUOROCARBON PER ASTM-D1457.
 - 2.0 PLATING:
 - 2.1 HOUSING, NUTS & WASHER: PASSIVATED PER MIL-F-14072 & QQ-P-35
 - 2.2 CENTER CONTACT: GOLD PER MIL-G-45204, TYPE II, CLASS 2
 - 3.0 ELECTRICAL SPECIFICATIONS:
 - 3.1 FREQUENCY RANGE: DC to 18.0 GHz
 - 3.2 VSWR (MAX): $1.07 + .015 f(\text{GHz})$
 - 3.3 IMPEDANCE: 50 OHMS
 - 4.0 MECHANICAL:
 - 4.1 INTERFACE: SMA PER MIL-STD-348A, FIG. 310-1; TNC PER MIL-STD-348, FIG 313-2
 - 4.2 CENTER CONTACT CAPTURED IN ACCORDANCE WITH MIL-C-39012
 - 5.0 DIMENSIONS IN PARENTHESIS ARE IN MILLIMETERS.
- ALL OTHER MECHANICAL, ELECTRICAL, AND ENVIRONMENTAL CHARACTERISTICS ARE IN ACCORDANCE WITH MIL-C-39012



RECOMMENDED MOUNTING HOLE NOT TO SCALE

REV.	DESCRIPTION	DATE
-	RELEASED	4/17/95
A	ECN 15669	12/23/96
B	ECN 17741	12/8/00
C	ECO 21981	3/31/09

UNLESS OTHERWISE NOTED DIMENSIONS ARE IN INCHES AND TOLERANCES ARE: 3 PLACE DECIMALS ±.005 2 PLACE DECIMALS ±.02 FRACTIONS ±1/64 PARALLELITY: T.I.R. _____ FLATNESS: T.I.R. _____ CONCENTRICITY: T.I.R. _____ ANGLES AND PERPENDICULARITY: ±1°	FSCM NO.	34078		MIDWEST MICROWAVE		
	NOTICE: The information contained in this drawing is proprietary and must not be used without the permission of Midwest Microwave				TITLE	
					ADAPTER - TNC JACK to SMA PLUG	
					DRAWING NUMBER	
				ADT-2815-TF-SMM-02		
				CHECKED/DATE	APPROVED/DATE	
				P.G. 4/4/95	A. OSGA 4/17/95	
				SCALE: 5=1	SHEET 1 of 1	