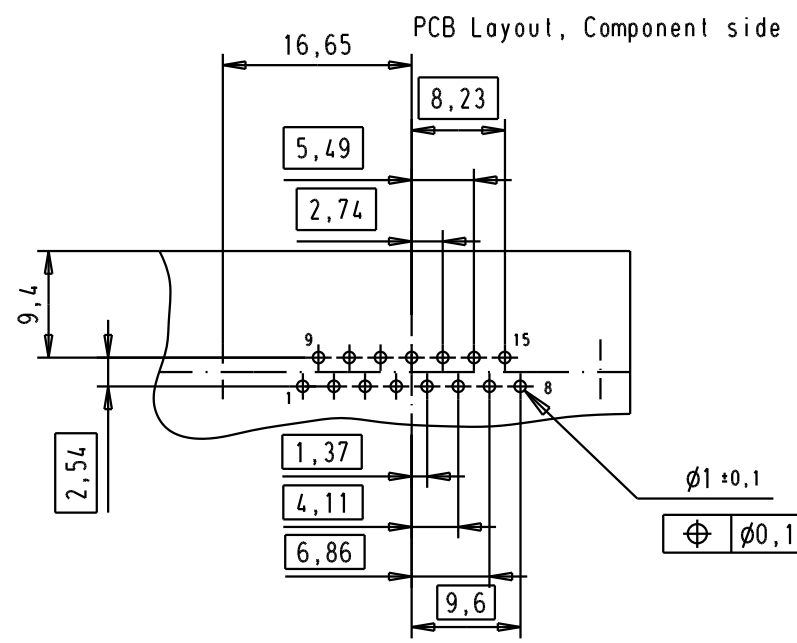
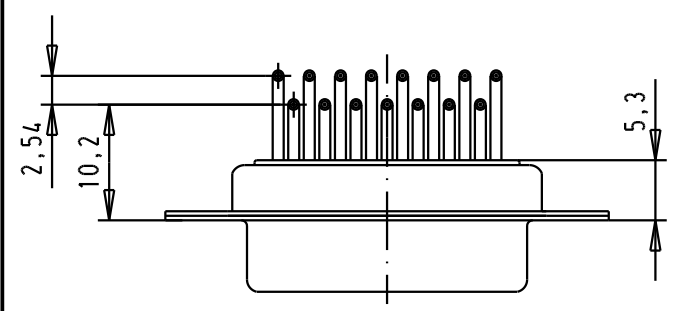
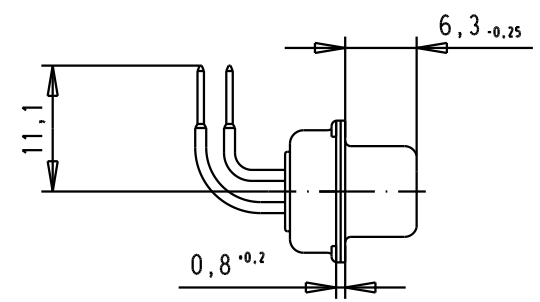
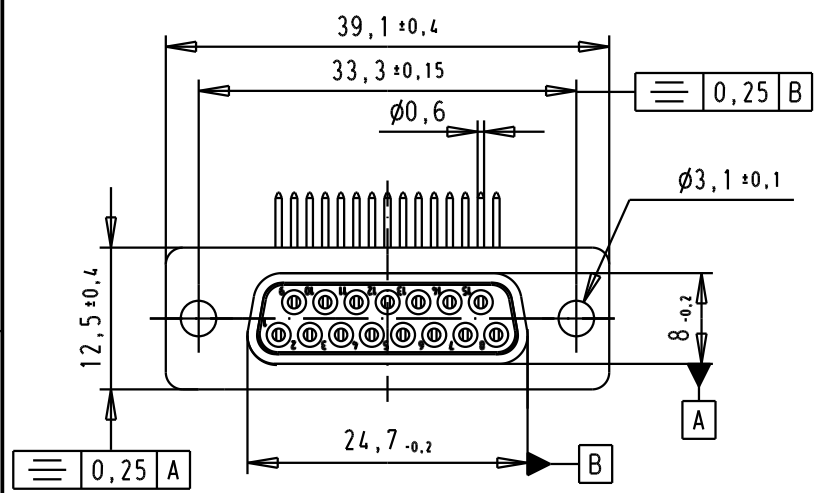


5 4 3 2 1

SPECIFICATION

Mating Cycles	500
Filter type	C
Capacitance	1000pf ± 20%
Working Voltage	100v
Current Rating	7.5A
Insulation Resistance	>1GΩ

FREQUENCY (MHz)	ATTENUATION dB
5	1dB
10	3dB
50	12dB
100	20dB
500	34dB
1000	30dB



						<p>All Dim. in mm Orig. Size DIN A 4</p>	Dsub, female, angled, 15 poles, turned solder pins tin plated shell with holes	Mo?MsLab/ Scale 1.5:1
			Detail.	8-JUL-02	CV			
			Insp.					
			Stand.					
33262	15/11/05	JMDR	HARTING EURL				TB 09642147230	Blatt/ Page 1 / 1
31058	8-JUL-02	CV	F-95972 Paris					
Mod.	Dat.	Name						