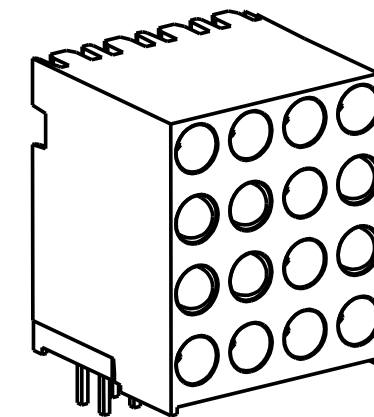
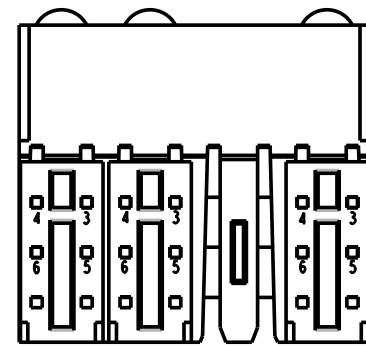
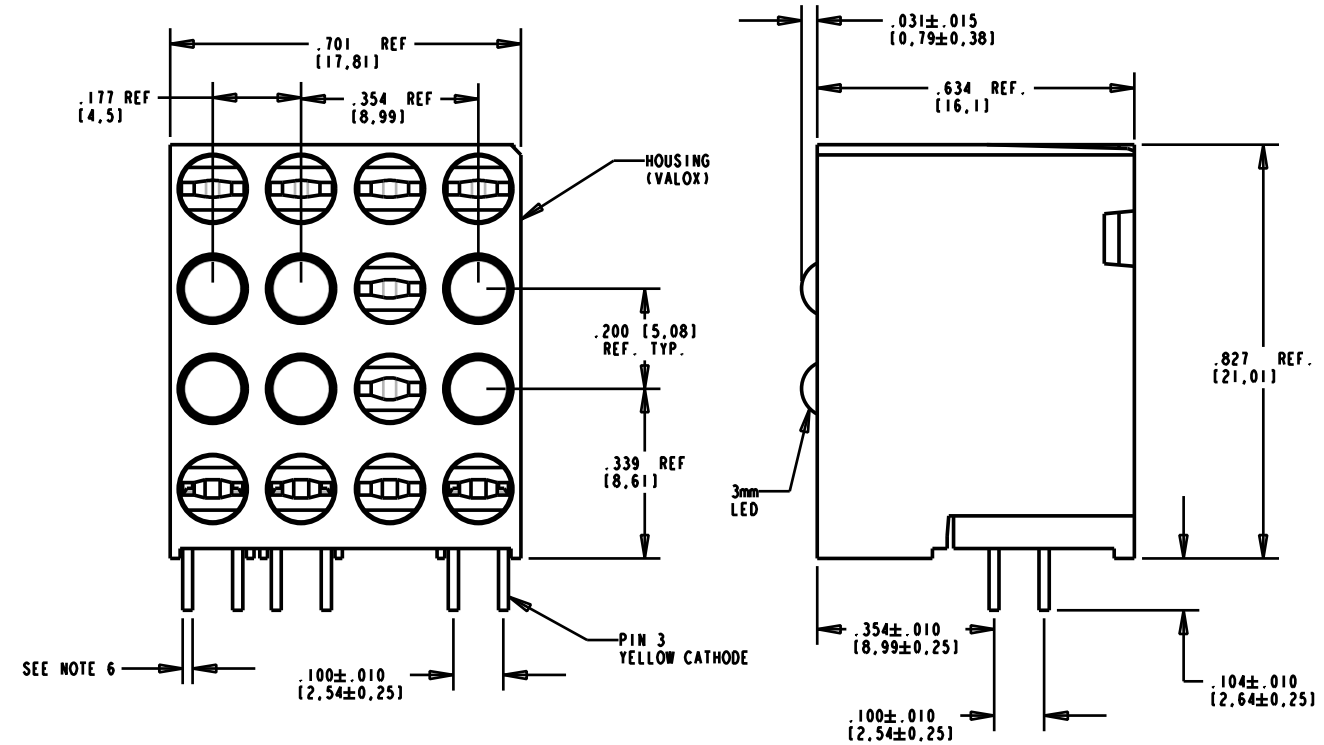


REV.	ECN NO.	REVISIONS	DRN.	CKD.	APP.	DATE
A		NEW RELEASE	YIS	D.C.	N.O.	3-25-02
B		ADDED 3-COM P/N: 7320-455-027 TO NOTE 1 & IN PKG TRAY.	YIS			

POSITION	COLOR	POSITION	COLOR	POSITION	COLOR	POSITION	COLOR
1	BLANK	5	BLANK	9	BLANK	13	BLANK
2	YELLOW/GREEN	6	YELLOW/GREEN	10	BLANK	14	YELLOW/GREEN
3	YELLOW/GREEN	7	YELLOW/GREEN	11	BLANK	15	YELLOW/GREEN
4	BLANK	8	BLANK	12	BLANK	16	BLANK

OPERATING CHARACTERISTICS AT 25°C AMBIENT						
CHARACTERISTICS		MIN	TYP	MAX	UNITS	TEST CONDITIONS
LUMINOUS INTENSITY	GREEN	2.5	6.3		mcd	I _r = 10 mA
	YELLOW	2.5	4.3			
FORWARD VOLTAGE	GREEN		2.1	2.8	V	I _r = 20 mA
	YELLOW		2.1	2.8		
REVERSE CURRENT	GREEN			100	µA	V _r = 5 V
	YELLOW			100		
PEAK WAVELENGTH	GREEN		565		nm	
	YELLOW		585			
VIEWING ANGLE	ALL		80		Degree	
CAPACITANCE	GREEN		35		pf	V _r = 0, f = 1 MHz
	YELLOW		15			

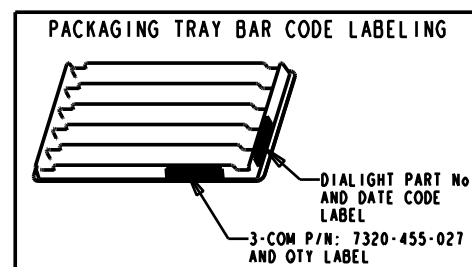
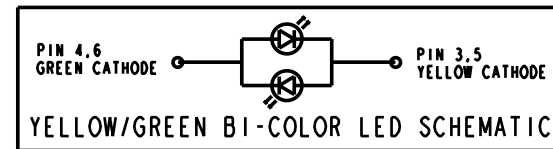
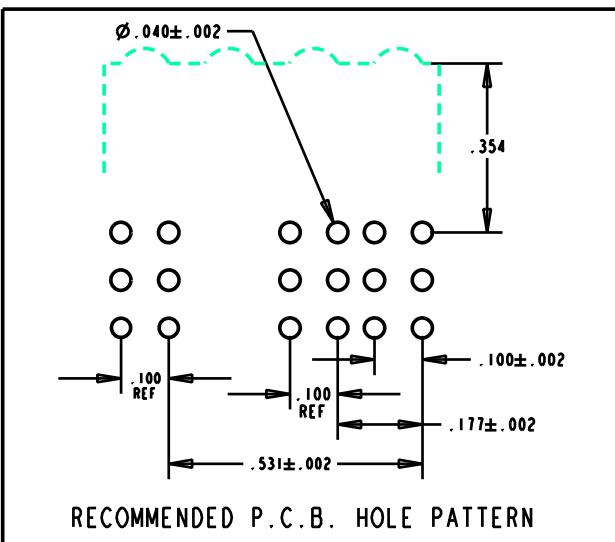
ABSOLUTE MAXIMUM RATING AT 25 °C AMBIENT			
POWER DISSIPATION	100	60	mW
DERATE LINEARLY FROM 50 °C	0.4	0.25	mW/°C
CONTINUOUS FORWARD CURRENT	30	20	mA
PEAK FORWARD CURRENT (1/10 DUTY CYCLE, 0.1 ms PULSE WIDTH)	120	80	mA
LEAD SOLDERING TEMPERATURE, 5 SEC., 1/16" FROM BODY	260		°C
OPERATING TEMPERATURE	-55 TO 100		°C
STORAGE TEMPERATURE	-55 TO 100		°C



SCALE 3.000

NOTES:

- 3-COM PART NUMBER: 7320-455-027
- LEADS TO FIT INTO HOLES SPACED AS PER HOLE PATTERN
- LED LEAD DIMENSIONS SHOWN ARE MEASURED AT HOUSING EXIT
- PIN NUMBERS ARE FOR REFERENCE ONLY AND DO NOT APPEAR ON PART
- PACKAGING =
BLOCKS ARE PLACED IN CLEAR ANTISTATIC TRAY
80 BLOCKS/TRAY = 5 TRAYS/BOX = 400 BLOCKS/BOX
- LED LEAD THICKNESS =
.018 X .016 = ALL LEADS
- DIALIGHT PART NUMBER = 568-0016-815



THIS DRAWING AND THE CONTENTS HEREIN ARE CONFIDENTIAL AND THE SOLE PROPERTY OF DIALIGHT. REPRODUCTION OF THIS DRAWING OR CONSTRUCTION OF ANY PARTS WITHIN THIS DRAWING ARE FORBIDDEN WITHOUT THE WRITTEN CONSENT OF DIALIGHT.		
SCALE: 4.000	DRAWING NUMBER	REV
ALL DIM'S IN: INCHES (MM)	C-16931	B
TOLERANCES: UNLESS OTHERWISE SPECIFIED	TITLE	
FRACTIONS: 1/64	4X4 CBI ARRAY BLOCK	
DECIMALS (.XX): ±.01	MATERIAL	
DECIMALS (.XXX): ±.005	Dialight	
DECIMALS (.XXXX): ±.0005	1501 ROUTE 34 SOUTH FARMINGDALE, NJ 07727	
ANGLES: ±1°	FSCN 83330	
FINISH:	SHEET OF FAMILY TABLES:	