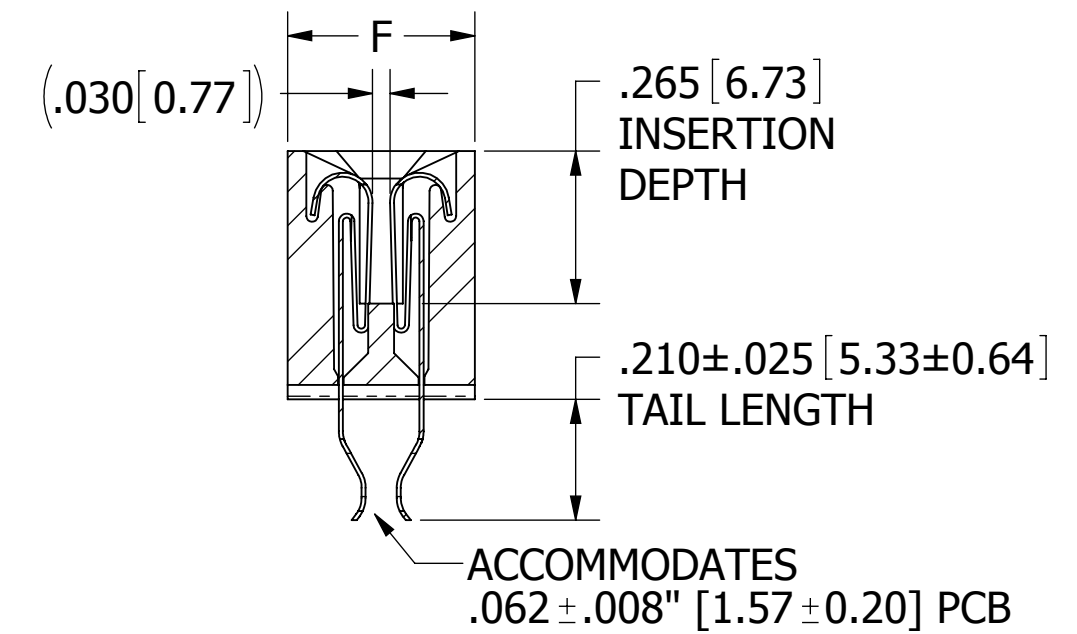
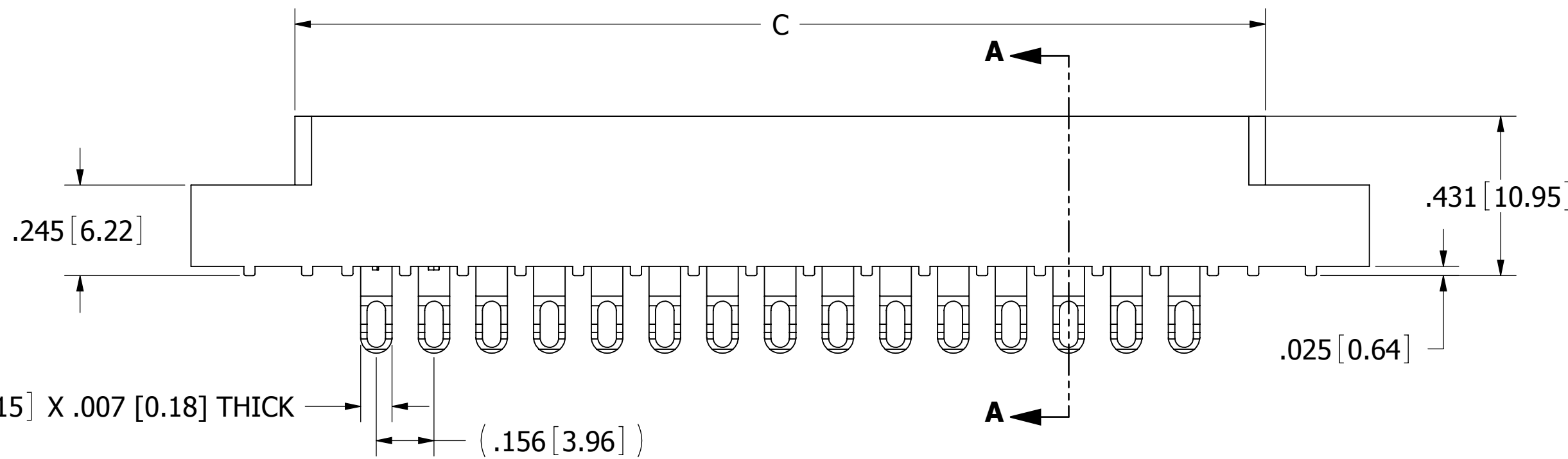
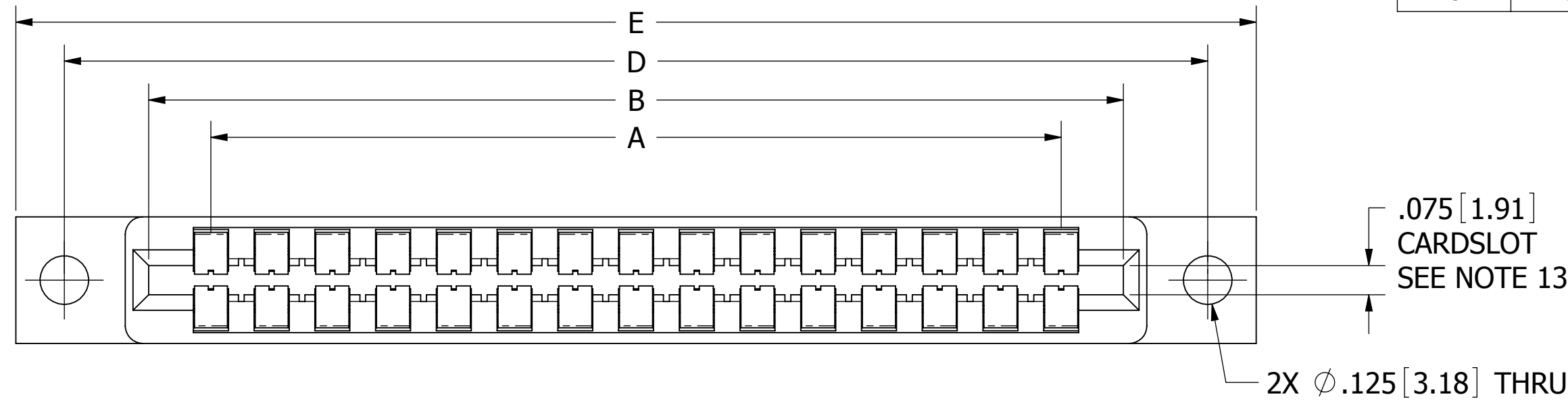
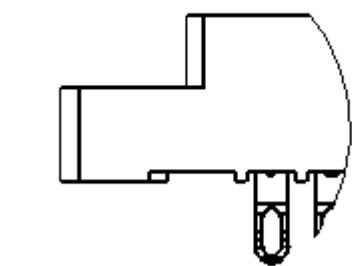


REVISIONS				
REV.	ECO. NO	DESCRIPTION	DATE	BY
B	2439	ADDED PLATING & INSULATOR OPTIONS	8/30/2011	JH
C	2520	UPDATED PN CODING TO INCLUDE REF S1077 OPTION	4/8/2013	JH



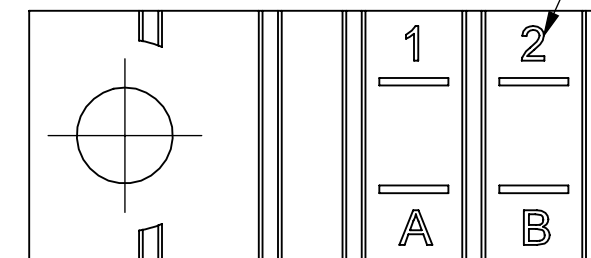
SECTION A-A

EMP _ _ _ 156 _ _ _ DPE-1(E) _ _ _



EMP _ _ _ 156 _ _ _ DPE-1(E) _ _ _ M

ADD 'M' TO END OF PART NUMBER FOR PADS ON ENDS OF CONNECTOR



CONTACT ID

CONTACT MARKINGS (LETTERS G, I, O & Q NOT USED)

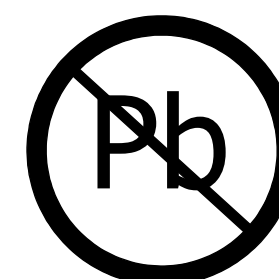
SIZE 02 THRU 25
 1 2 3 ... 23 24 25
 A B C ... AA BB CC
 SIZE 28 & 44
 1 2 3 ... 23 24 25
 A B C ... A B C
 SIZE 36 & 43
 A B C ... A B C
 1 2 3 ... 23 24 25

NOTES:

- INSULATOR MATERIAL: SEE PART NUMBER CODING
- CONTACT MATERIAL: SEE PART NUMBER CODING
- PLATING: SEE PART NUMBER CODING
- OPERATING TEMPERATURE: SEE PART NUMBER CODING
- PROCESSING TEMP: SEE PART NUMBER CODING
- UL FLAMMABILITY RATING: 94V-0
- OPERATING VOLTAGE: 950 VAC MINIMUM AT SEA LEVEL
- CURRENT RATING: 3 AMP
- CONTACT RESISTANCE: 30 MILLI OHMS MAX
- INSULATION RESISTANCE: 5000 MEGA OHMS
- DURABILITY: 500 CYCLES MIN
- CONNECTOR IDENTIFICATION: THE PART SHALL BE MARKED WITH A PART NUMBER AND LOT CODE
- BOARD THICKNESS ACCOMMODATED: .062 ± .008 [1.57 ± 0.20]
- INSERTION FORCE: 16 OZ MAX PER CONTACT PAIR WHEN USING A .062 [1.57] TEST BLADE
INTERNAL INSPECTION TO BE PER SULLIN'S WORK INSTRUCTION WI7.3-01
- WITHDRAWAL FORCE: 1 OZ MIN PER CONTACT PAIR USING .062 [1.57] PCB
- MODIFICATION: MICRO PLASTICS FLARED, CARD EXTENDER BEND FOR LOW PROFILE CONNECTOR, .055" INSIDE DIMENSION FOR .062" PCB.

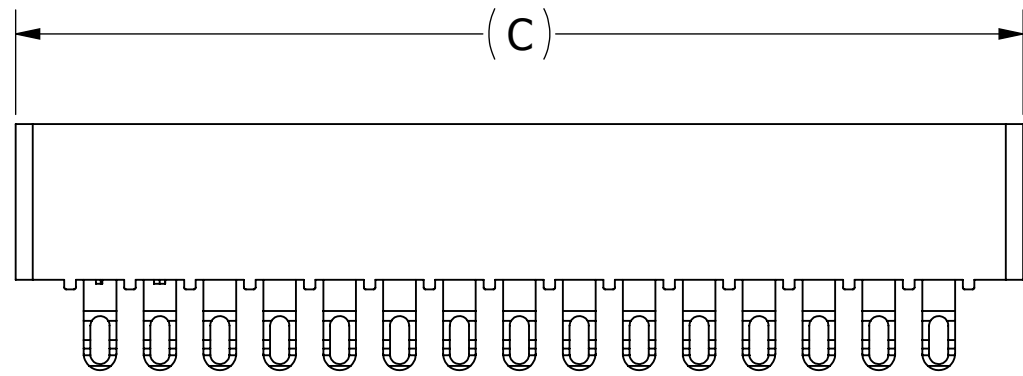
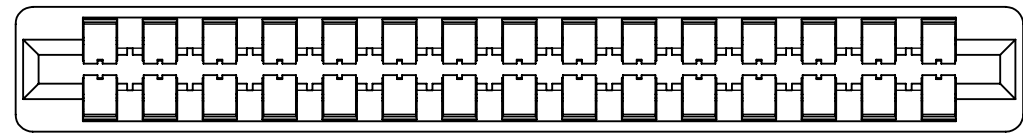
REF: _ _ M _ DSE _ P13, P69, S1077, S1165

CUSTOMER COPY

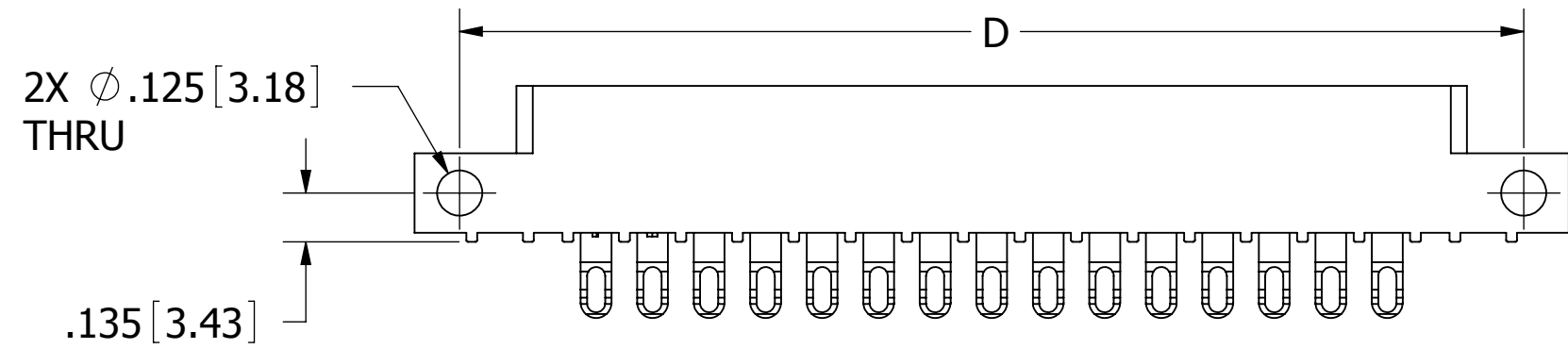
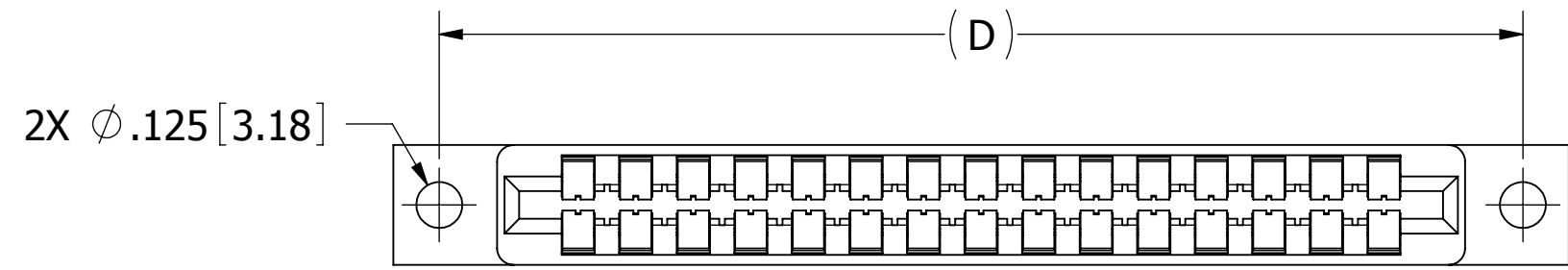


RoHS COMPLIANT

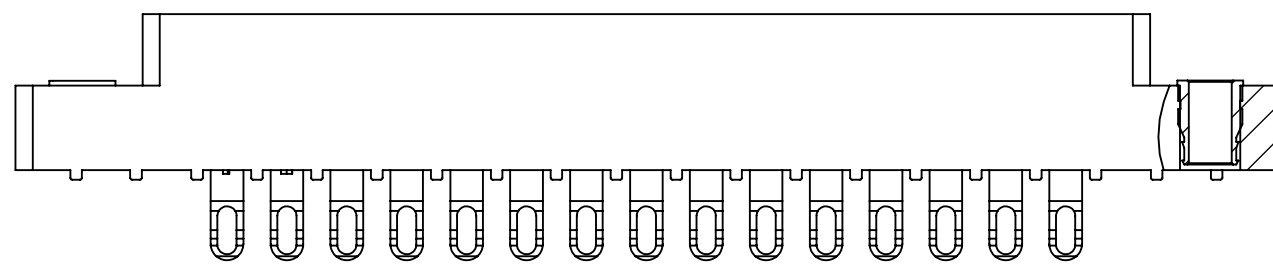
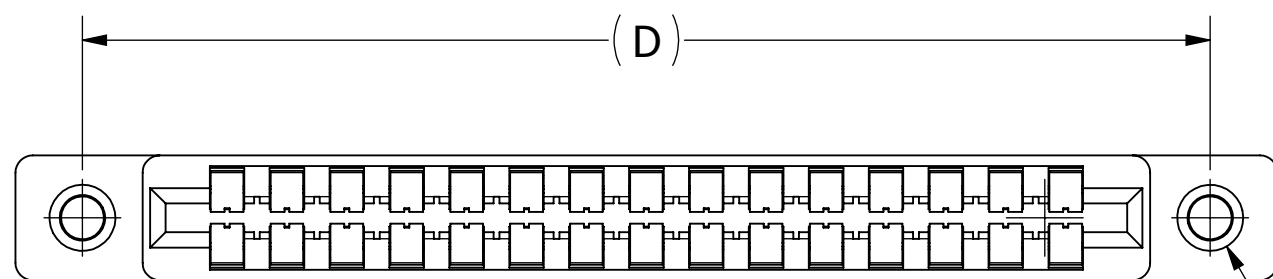
UNLESS OTHERWISE SPECIFIED: DIMENSIONS ARE IN INCHES [MM]		DRAWN	DATE	NAME	
TOLERANCES: ANGULAR: ± 1° DECIMALS .XX = ± .02 [.5] .XXX = ± .005 [.13] .XXXX = ± .0005 [.013]			7/14/2009	JH	
<small>THE INFORMATION HEREIN CONTAINS PROPRIETARY INFORMATION OF SULLINS ELECTRONICS AND IS NOT TO BE REPRODUCED, USED OR DISCLOSED TO OTHERS FOR ANY PURPOSE EXCEPT AS SPECIFICALLY AUTHORIZED IN WRITING BY AN OFFICER OF SULLINS ELECTRONICS.</small>					PART NUMBER EMP _ _ _ 156 _ _ _ DPE _ _ (E) _ _ _
SIZE	CAGE CODE	DWG. NO.	REV		
C	54453	C11270	C		
SCALE: 3:1		SHEET 1 OF 3			



EMP -156- -DPE-4(E)



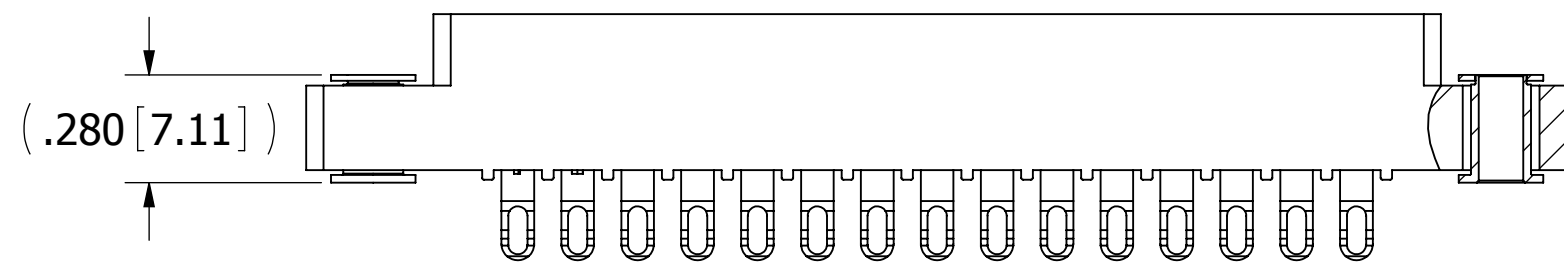
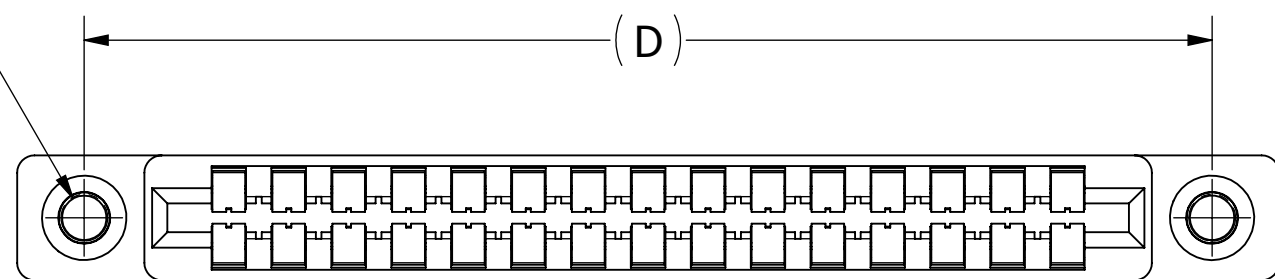
EMP -156- -DPE-8(E)



EMP -156- -DPE-2(E)

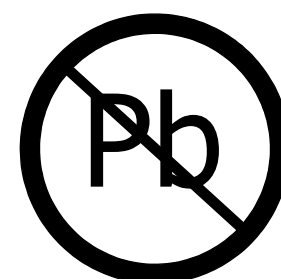
2X FLOATING BOBBIN
 $\phi .116 [2.95]$ CLEARANCE
 HOLE FOR #4 SCREW

2X #4-40
 THREADED
 INSERTS



EMP -156- -DPE-3(E)

CUSTOMER COPY



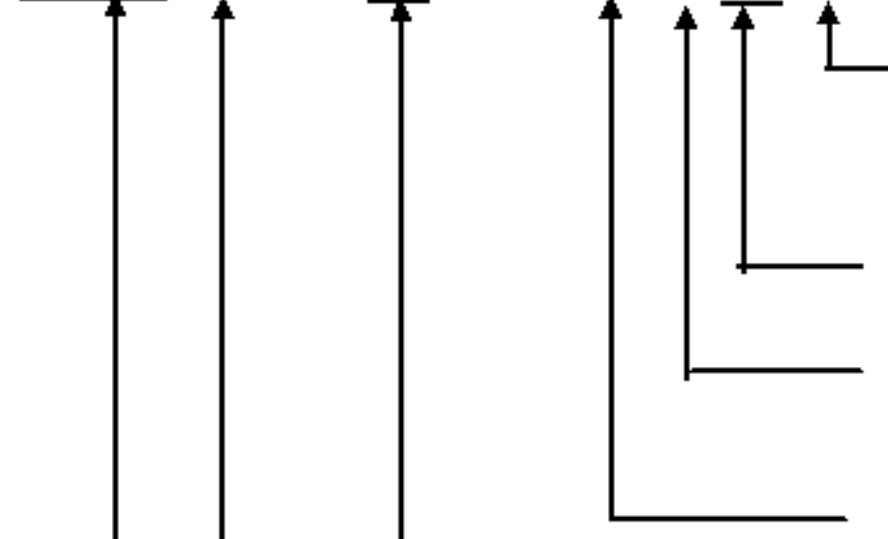
RoHS COMPLIANT

UNLESS OTHERWISE SPECIFIED: DIMENSIONS ARE IN INCHES [MM]	DRAWN	DATE	NAME	
		7/14/2009	JH	
TOLERANCES: ANGULAR: $\pm 1^\circ$ DECIMALS .XX = $\pm .02 [.5]$.XXX = $\pm .005 [.13]$.XXXX = $\pm .0005 [.013]$	THE INFORMATION HEREIN CONTAINS PROPRIETARY INFORMATION OF SULLINS ELECTRONICS AND IS NOT TO BE REPRODUCED, USED OR DISCLOSED TO OTHERS FOR ANY PURPOSE EXCEPT AS SPECIFICALLY AUTHORIZED IN WRITING BY AN OFFICER OF SULLINS ELECTRONICS.			TITLE
				EDGE CARD, .156 CC, LP
				PART NUMBER EMP -156- -DPE- (E)
	SIZE	CAGE CODE	DWG. NO.	REV
	C	54453	C11270	C
SCALE: 2:1			SHEET 2 OF 3	

PART NUMBER	NO. OF POS.	A ± .008[0.20]		B ± .008[0.20]		C ± .015[0.38]		D ± .010[0.25]		E ± .020[0.51]		E ± .020[0.51]		F +.005 [0.13]/-.015 [0.38]			
		IN	MM	IN	MM	IN	MM	IN	MM	IN	MM	IN	MM	IN	MM		
		EMP_156-02-DPE- (E)	2	0.156	3.96	0.476	12.09	0.596	15.14	N' MOUNTING							
EMP_156-03-DPE- (E)	3	0.312	7.92	0.632	16.05	0.752	19.10										
EMP_156-06-DPE- (E)	6	0.780	19.81	1.100	27.94	1.220	30.99	1.533	38.94	1.782	45.26	1.882	47.80				
EMP_156-08-DPE- (E)	8	1.092	27.74	1.412	35.86	1.532	38.91	1.845	46.86	2.094	53.19	2.194	55.73				
EMP_156-10-DPE- (E)	10	1.404	35.66	1.724	43.79	1.844	46.84	2.157	54.79	2.406	61.11	2.506	63.65				
EMP_156-11-DPE- (E)	11	1.560	39.62	1.880	47.75	2.000	50.80	2.313	58.75	2.562	65.07	2.662	67.61	0.325	8.26		
EMP_156-12-DPE- (E)	12	1.716	43.59	2.036	51.71	2.156	54.76	2.469	62.71	2.718	69.04	2.818	71.58				
EMP_156-15-DPE- (E)	15	2.184	55.47	2.504	63.60	2.624	66.65	2.937	74.60	3.186	80.92	3.286	83.46				
EMP_156-18-DPE- (E)	18	2.652	67.36	2.972	75.49	3.092	78.54	3.405	86.49	3.654	92.81	3.754	95.35				
EMP_156-22-DPE- (E)	22	3.276	83.21	3.596	91.34	3.716	94.39	4.029	102.34	4.278	108.66	4.378	111.20				
EMP_156-2-DPE- (E)	24	3.588	91.14	3.908	99.26	4.028	102.31	4.341	110.26	4.590	116.59	4.690	119.13				
EMP_156-25-DPE- (E)	25	3.744	95.10	4.064	103.23	4.184	106.27	4.497	114.22	4.746	120.55	4.846	123.09				
EMP_156-28-DPE- (E)	28	4.212	106.98	4.532	115.11	4.652	118.16	4.965	126.11	5.214	132.44	5.314	134.98	0.438	11.13		
EMP_156-36-DPE- (E)	36	5.460	138.68	5.780	146.81	5.900	149.86	6.213	157.81	6.462	164.13	6.562	166.67				
EMP_156-43-DPE- (E)	43	6.552	166.42	6.872	174.55	6.992	177.60	7.305	185.55	7.554	191.87	7.654	194.41	0.500	12.70		
EMP_156-44-DPE- (E)	44	6.708	170.38	7.028	178.51	7.148	181.56	7.461	189.51	7.710	195.83	7.810	198.37				

FOR CONNECTORS WITH THREADED INSERTS OR FLOATS

PART NUMBER CODING



CONTACT MATERIAL
 OMIT= PHOSPHOR BRONZE (SEE TABLE 2)
 Y= BERYLLIUM COPPER (SEE TABLE 3)

PLATING MODIFICATION CODE (SEE TABLE 1)

MODIFICATION CODE
 E = OBSOLETE (CAN BE OMITTED)**

MOUNTING STYLE
 1= .125" DIA. CLEARANCE HOLES
 2= #4-40 THREADED INSERT
 3= FLOATING BOBBIN
 4= NO MOUNTING EARS
 8= .125" DIA. SIDE HOLES
 1M = .125" DIA. CLEARANCE HOLES , PADS ON BOTH ENDS

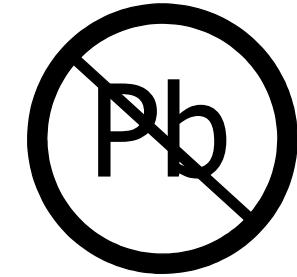
NUMBER OF POSITIONS (CONTACTS PER ROW)

INSULATOR MATERIAL
 0= PBT, BLUE
 2= PBT, GREEN
 3= PBT, BLACK
 4= PA9T, BLACK
 1= PPS, BROWN
 5= PPS, BLACK
 6= PPS, GREEN
 7= PPS, BROWN

PLATING (SEE TABLE 1)

**OPTIONAL "E" CODE MEANS .020" LONGER CARD SLOT, NOW STANDARD, SEE DIMENSION 'B'

CUSTOMER COPY



RoHS COMPLIANT

TABLE 1 (PLATING):

ALL PLATINGS HAVE .000050" NICKEL UNDERPLATE

	CONTACT SURFACE	TERMINATION	PLATING MODIFICATION CODE
EMP	.000010" GOLD OVERALL		OMIT
	.000030" GOLD	.000010" GOLD OVERALL	G
EMPSL	.000010" GOLD	.000100" PURE TIN, MATTE	K
	.000030" GOLD	.000100" PURE TIN, MATTE	GK
EMPL	.000100" PURE TIN, MATTE OVERALL		K

(EMPL PLATING AVAILABLE WITH PHOSPHOR BRONZE CONTACTS ONLY)

TABLE 2 (PHOSPHOR BRONZE CONTACTS):

INSULATOR MATERIAL CODE	OPERATING TEMPERATURE	PROCESSING TEMPERATURE
0, 2, 3	-65°C TO +125°C	WAVE SOLDERING ONLY
1, 5, 6, 7	-65°C TO +125°C	260°C FOR 120 SEC MAX
4	-65°C TO +125°C	260°C FOR 20 SEC MAX

TABLE 3 (BERYLLIUM COPPER CONTACTS):

INSULATOR MATERIAL CODE	OPERATING TEMPERATURE	PROCESSING TEMPERATURE
0, 2, 3	-65°C TO +125°C	260°C FOR 10 SEC MAX (230°C, 30 SEC)
1, 5, 6, 7	-65°C TO +150°C	260°C FOR 120 SEC MAX
4	-65°C TO +150°C	260°C FOR 20 SEC MAX

UNLESS OTHERWISE SPECIFIED: DIMENSIONS ARE IN INCHES (MM)	DRAWN	DATE	NAME	
		7/14/2009	JH	
TOLERANCES: ANGULAR: ± 1° DECIMALS .XX=± .02 [.5] .XXX=± .005 [.13] .XXXX=± .0005 [.013]	THE INFORMATION HEREIN CONTAINS PROPRIETARY INFORMATION OF SULLINS ELECTRONICS AND IS NOT TO BE REPRODUCED, USED OR DISCLOSED TO OTHERS FOR ANY PURPOSE EXCEPT AS SPECIFICALLY AUTHORIZED IN WRITING BY AN OFFICER OF SULLINS ELECTRONICS.			TITLE
				EDGE CARD, .156 CC, LP
PART NUMBER				REV
EMP_156-DPE-(E)				C
SIZE	CAGE CODE	DWG. NO.		
C	54453	C11270		
SCALE: 2:1			SHEET 3 OF 3	