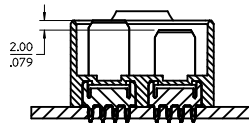
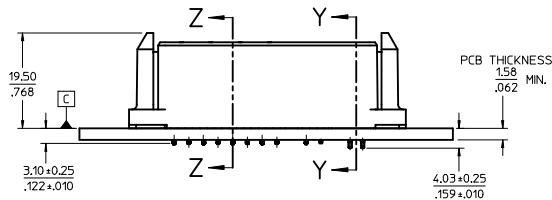
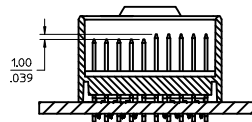


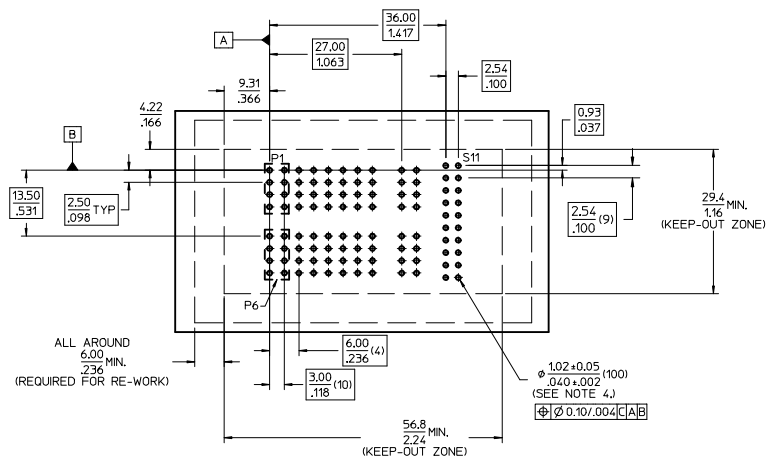
P/N 76546-0003 SHOWN



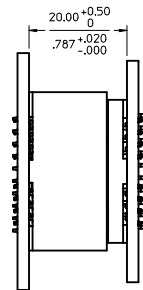
SECTION Z-Z



SECTION Y-Y



RECOMMENDED PCB LAYOUT



PCB-TO-PCB SPACING CONNECTORS FULLY SEATED

ITEM NO	PART NUMBER	NO OF POWER	NO OF SIGNAL	DESCRIPTION
1	76546-0002	10	16	SHORT POWER: P1-P5, P10 SHORT SIGNAL: S6-S8, S16-S18
2	76546-0003	10	20	SHORT POWER: P1-P5, P10 SHORT SIGNAL: S6-S10, S16-S20
3	76546-0010	10	20	SHORT POWER: P6-P10 SHORT SIGNAL: S4-S10, S14-S20
4	X	X	X	
5	X	X	X	
6	X	X	X	
7	X	X	X	
8	X	X	X	
9	X	X	X	
10	X	X	X	

NOTES:

- MATERIAL: HOUSING - LCP OR EQUIVALENT, 94V-0, COLOR: BLACK  
CONTACTS - COPPER ALLOY
- FINISH: SELECT GOLD - 0.38µ M/50µ IN  
SELECT TIN - 2.54µ M/100µ IN  
BOTH OVER NICKEL - 127µ M/50µ IN
- SEE PRODUCT SPEC FOR RoHS REQUIREMENTS.
- PCB REQUIRES PLATED THRU HOLES. SEE PRODUCT SPEC FOR DETAILS.
- MATES TO MOLEX P/N 76541-SERIES. SEE DWG SD-76541-0001.
- PRODUCT SPECIFICATION: PS-46436-100.
- PACKAGING PER PK-76546-002.
- INSERTION FORCE 89N/20lbs MAX PER TAIL.
- APPLICATION SPEC AS-46436-100.

CORRECTED NOTES EC NO: LCP2013-0439 DRAWN: JUILLES 2012/08/01 CHKD: BPI/SZCZOR 2012/08/01 APPR: APATEL 2012/08/07	QUALITY SYMBOLS	GENERAL TOLERANCES (UNLESS SPECIFIED)	DIMENSION STYLE MM/IN	SCALE 2:1	DESIGN UNITS METRIC	THIRD ANGLE PROJECTION
	DRAFT WHERE APPLICABLE MUST REMAIN WITHIN DIMENSIONS	4 PLACES ±.010 3 PLACES ±.010 2 PLACES ±0.25 1 PLACE ±0.25 ANGULAR ±1/2°	DRAWN BY DATE MKARADI MAS 2009/09/28 CHECKED BY DATE BKOSTIC 2009/09/28 APPROVED BY DATE APATEL 2009/09/28	TITLE PRESS-FIT PLUG ASSY UP TO 10 PWR AND 20S TEN60 MEZZ W/SHROUD		
A4	SIZE D	MATERIAL NO. SEE CHART	DOCUMENT NO. SD-76546-0001	SHEET NO. 1 OF 1		