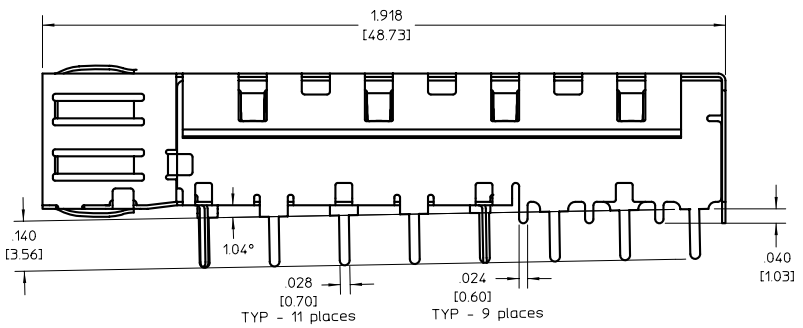
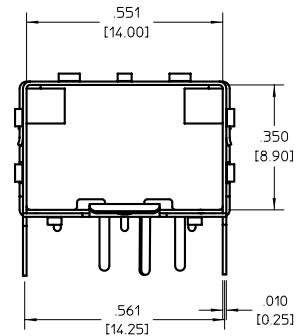
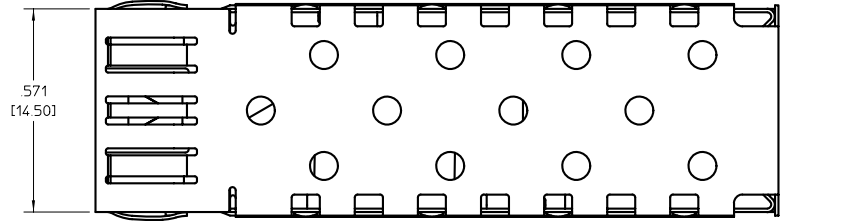
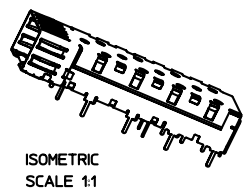


SFP Cage - Exploded View

1. Material full-hard tin plated brass or bronze .010" thick
2. Cage accepts all MSA Small Form-factor Pluggable adapters such as Molex patch cable assembly 73929
3. Sales Drawing Set SD-73927-001 depicts details of press-fit version of cage.
4. Sales Drawing Set SD-73927-002 depicts details of solder post version of cage.
5. Sales Drawing Set SD-73927-003 depicts details of surface mount version of cage.

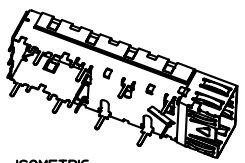
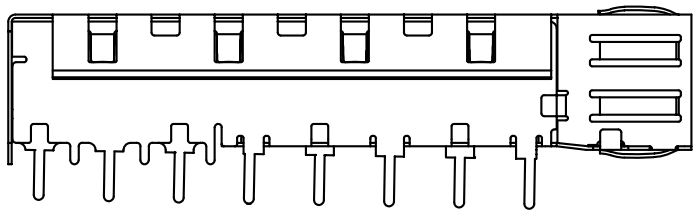
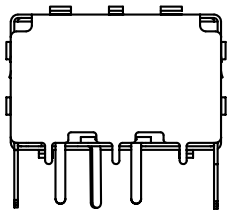
ASSOCIATED PARTS	
MATERIAL NO.	DESCRIPTION
73927-0020	SFP CAGE COVER
73927-0060	SFP CAGE BASE

SD UPDATE EC NO. UDT2001-0273 DRWN: DIRKERS 2001/05/01 CHKD: DIRKERS 2001/05/02 APPR: DDOYE 2001/05/03	DESCRIPTION REV	QUALITY SYMBOLS	GENERAL TOLERANCES (UNLESS SPECIFIED)	SCALE 3:1	DESIGN UNITS METRIC	THIRD ANGLE PROJECTION	REVISE ON CAD ONLY														
		$\nabla = 0$ $\sphericalcap = 0$	<table border="1"> <thead> <tr> <th></th> <th>mm</th> <th>INCH</th> </tr> </thead> <tbody> <tr> <td>4 PLACES</td> <td>$\pm .005$</td> <td>$\pm .0005$</td> </tr> <tr> <td>3 PLACES</td> <td>$\pm .005$</td> <td>$\pm .0005$</td> </tr> <tr> <td>2 PLACES</td> <td>$\pm .005$</td> <td>$\pm .0005$</td> </tr> <tr> <td>1 PLACE</td> <td>± 0.13</td> <td>$\pm .005$</td> </tr> </tbody> </table>		mm	INCH	4 PLACES	$\pm .005$	$\pm .0005$	3 PLACES	$\pm .005$	$\pm .0005$	2 PLACES	$\pm .005$	$\pm .0005$	1 PLACE	± 0.13	$\pm .005$	DIMENSION STYLE IN/MM DRAWN BY DATE DIRKERS 2001/01/10 CHECKED BY DATE DIRKERS 2001/01/10	TITLE SFP CAGE ASSEMBLY PCI VERSION	
			mm	INCH																	
		4 PLACES	$\pm .005$	$\pm .0005$																	
3 PLACES	$\pm .005$	$\pm .0005$																			
2 PLACES	$\pm .005$	$\pm .0005$																			
1 PLACE	± 0.13	$\pm .005$																			
DRAFT WHERE APPLICABLE MUST REMAIN WITHIN DIMENSIONS		APPROVED BY DATE RUSSELL 2001/01/10	MATERIAL NO. 73927-0004 DOCUMENT NO. SD-73927-004 SHEET NO. 1 OF 6																		
THIS DRAWING CONTAINS INFORMATION THAT IS PROPRIETARY TO MOLEX INCORPORATED AND SHOULD NOT BE USED WITHOUT WRITTEN PERMISSION																					

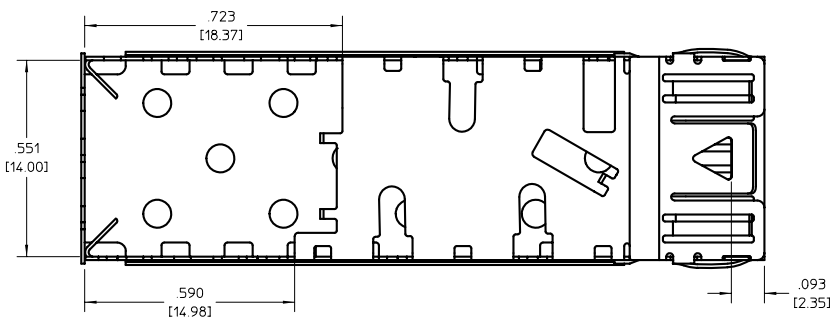


1. Dimensions of solder posts fit hole pattern and sizes per MSA guidelines.

SD UPDATE EC NO: UDT2001-0273 DRWN: DIRKERS 2001/05/01 CHKD: DIRKERS 2001/05/02 APPR: DDOYE 2001/05/03	DESCRIPTION REV	QUALITY SYMBOLS	GENERAL TOLERANCES (UNLESS SPECIFIED)		SCALE 5:1	DESIGN UNITS METRIC	THIRD ANGLE PROJECTION	REVISE ON CAD ONLY		
		▽ = 0	mm	INCH	DIMENSION STYLE IN/MM		TITLE SFP CAGE ASSEMBLY PCI VERSION			
		∇ = 0	4 PLACES ± ---	± ---	DRAWN BY DIRKERS	DATE 2001/01/10	MOLEX INCORPORATED			
			3 PLACES ± ---	± .005	CHECKED BY DIRKERS	DATE 2001/01/10	MATERIAL NO 73927-0004	DOCUMENT NO SD-73927-004	SHEET NO 2 OF 6	
		2 PLACES ± ---	± ---	APPROVED BY RUSSELL	DATE 2001/01/10	THIS DRAWING CONTAINS INFORMATION THAT IS PROPRIETARY TO MOLEX INCORPORATED AND SHOULD NOT BE USED WITHOUT WRITTEN PERMISSION				
		1 PLACE ± 0.13	± ---	DRAFT WHERE APPLICABLE MUST REMAIN WITHIN DIMENSIONS						
		ANGULAR ± 1/2°								



ISOMETRIC
SCALE 1:1



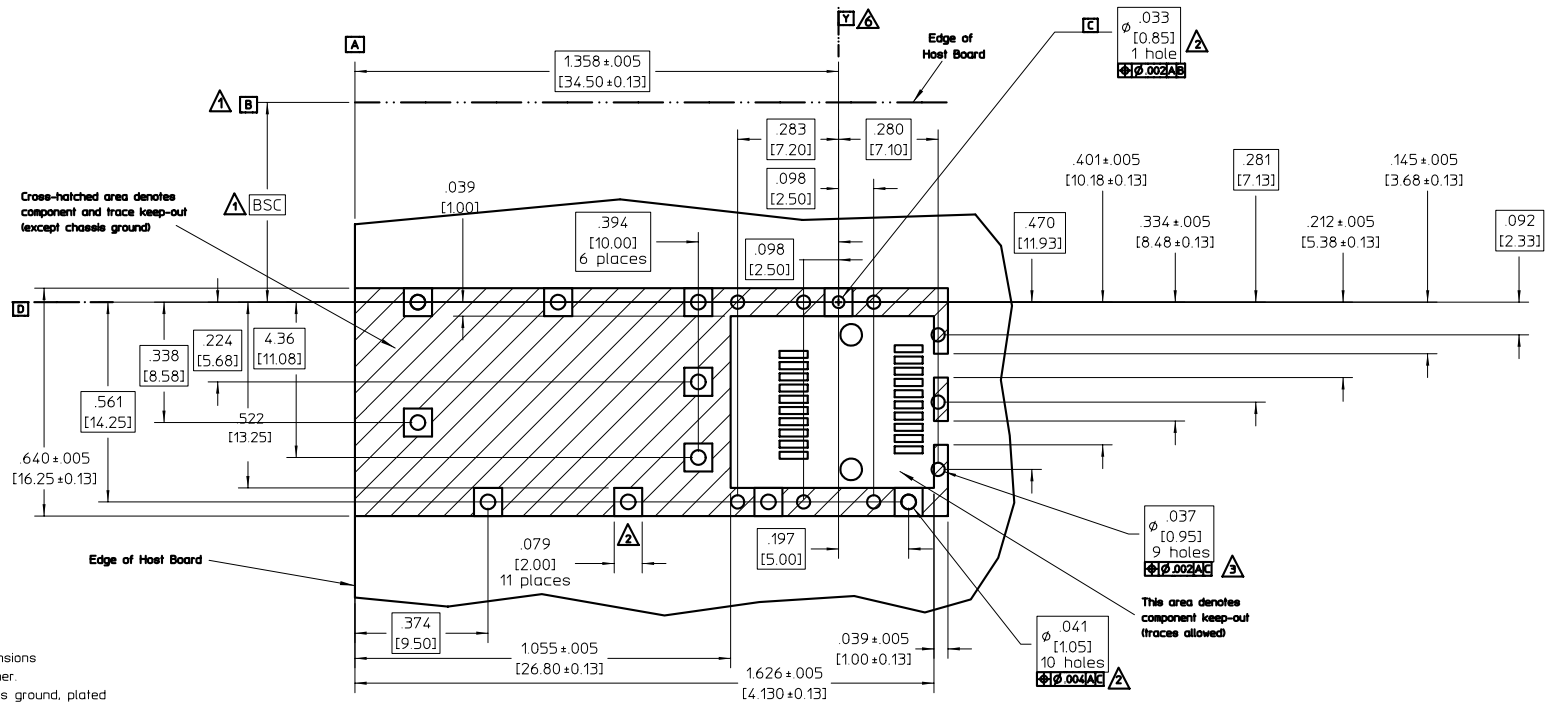
SD UPDATE	DESCRIPTION
EC NO: UDT2001-0273	
DRWN: DIRKERS 2001/05/01	
CHKD: DIRKERS 2001/05/02	
APPR: DDOYE 2001/05/03	
REV	

QUALITY SYMBOLS	DESCRIPTION
▽ = 0	
∇ = 0	

GENERAL TOLERANCES (UNLESS SPECIFIED)	
	INCH
4 PLACES	± .005
3 PLACES	± .005
2 PLACES	± .005
1 PLACE	± 0.13
ANGULAR ±1/2°	
DRAFT WHERE APPLICABLE MUST REMAIN WITHIN DIMENSIONS	

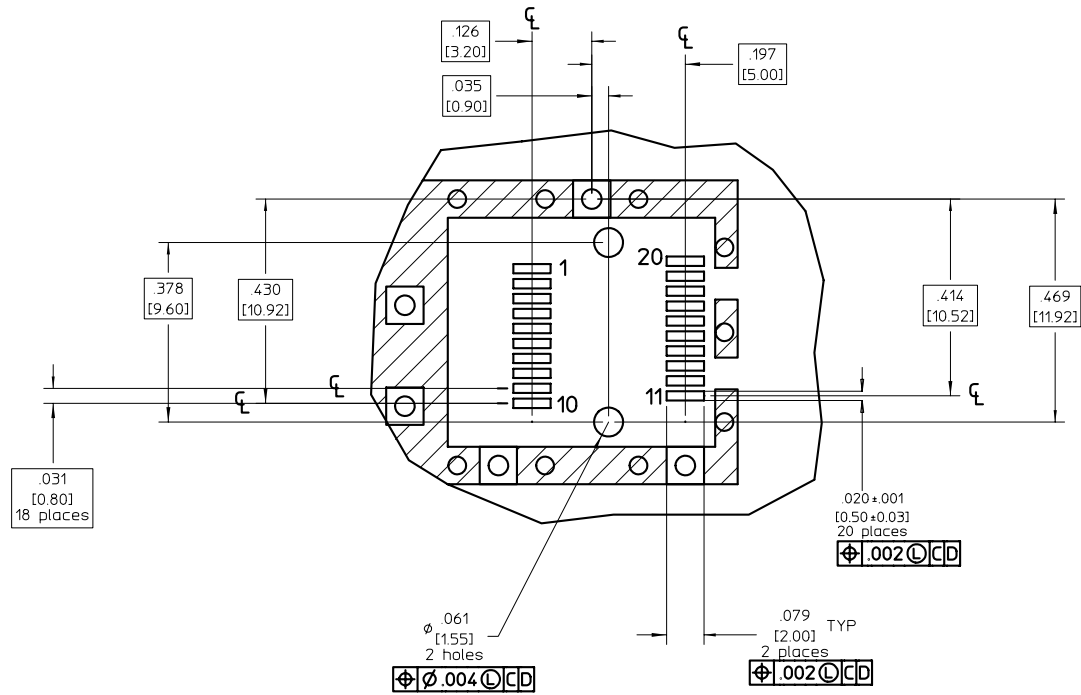
SCALE 5:1	DESIGN UNITS METRIC
DIMENSION STYLE IN/MM	
DRAWN BY DIRKERS	DATE 2001/01/10
CHECKED BY DIRKERS	DATE 2001/01/10
APPROVED BY RUSSELL	DATE 2001/01/10

THIRD ANGLE PROJECTION	REVISE ON CAD ONLY
TITLE SFP CAGE ASSEMBLY PCI VERSION	
MOLEX INCORPORATED	
MATERIAL NO 73927-0004	DOCUMENT NO SD-73927-004
SHEET NO 3 OF 6	B
THIS DRAWING CONTAINS INFORMATION THAT IS PROPRIETARY TO MOLEX INCORPORATED AND SHOULD NOT BE USED WITHOUT WRITTEN PERMISSION	



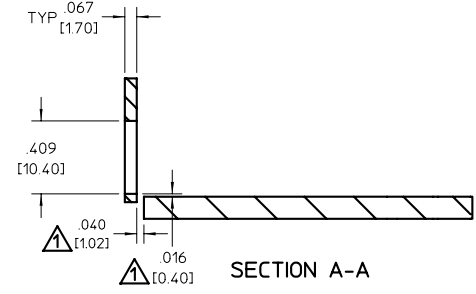
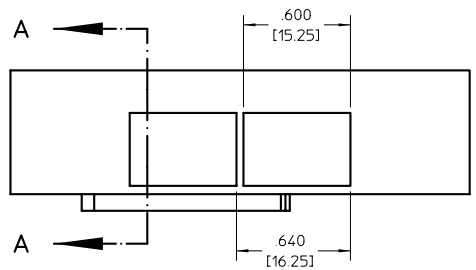
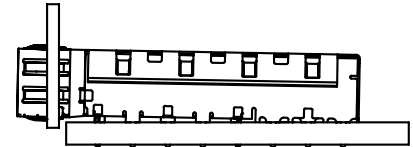
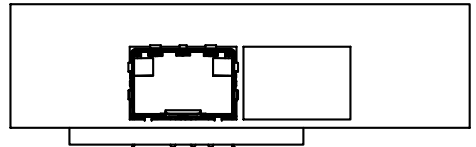
- △ Datum and basic dimensions established by customer.
- △ Vias and pads chassis ground, plated through, 11 places. Pads locations on reverse side of board if wave soldered.
- △ Holes optionally plated through.
- 4 Hole pattern allows two parts to be mounted "belly-to-belly" on .125" ± 5% boards. Hole layout shown for one side only. Transceiver profile outside cage determines min. board thickness in "belly-to-belly" applications.
- 5 "Belly-to-belly" mounting on boards < .118" nom. requires trimming of interior cage legs.
- △ Cage datum Y shown for reference to cage, only.

SD UPDATE EC NO: UDT2001-0273 DRWN: DIRKERS 2001/05/01 CHKD: DIRKERS 2001/05/02 APPR: DDOYE 2001/05/03	DESCRIPTION QUALITY SYMBOLS ▽ = 0 ▽ = 0	GENERAL TOLERANCES (UNLESS SPECIFIED)		SCALE 3:1	DESIGN UNITS METRIC	THIRD ANGLE PROJECTION	REVISE ON CAD ONLY		
		4 PLACES ± --- ± --- 3 PLACES ± --- ± .005 2 PLACES ± --- ± --- 1 PLACE ± 0.13 ± ---	DIMENSION STYLE IN/MM	TITLE SFP CAGE ASSEMBLY PCI VERSION		MOLEX INCORPORATED			
		DRAFT WHERE APPLICABLE MUST REMAIN WITHIN DIMENSIONS		DRAWN BY DIRKERS	DATE 2001/01/10				
				CHECKED BY DIRKERS	DATE 2001/01/10	MATERIAL NO 73927-0004	DOCUMENT NO SD-73927-004	SHEET NO 4 OF 6	



1. Connector pad pattern per MSA, will accommodate surface mount Molex connector 74441 or equivalent.

EC NO: UDT2001-0273 DRWN: DIRKERS 2001/05/01 CHKD: DIRKERS 2001/05/02 APPR: DDOYE 2001/05/03	QUALITY SYMBOLS ▽ = 0 ∇ = 0	GENERAL TOLERANCES (UNLESS SPECIFIED) 4 PLACES ± --- ± --- 3 PLACES ± --- ± .005 2 PLACES ± --- ± --- 1 PLACE ± 0.13 ± --- ANGULAR ± 1/2°	SCALE 3:1 DESIGN UNITS METRIC DIMENSION STYLE IN/MM DRAWN BY DIRKERS DATE 2001/01/10 CHECKED BY DIRKERS DATE 2001/01/10 APPROVED BY RUSSELL DATE 2001/01/10	THIRD ANGLE PROJECTION REVISE ON CAD ONLY TITLE SFP CAGE ASSEMBLY PCI VERSION MOLEX INCORPORATED MATERIAL NO ENTER-PART SD-73927-004 DOCUMENT NO 5 OF 6 SHEET NO 6
	DRAFT WHERE APPLICABLE MUST REMAIN WITHIN DIMENSIONS	THIS DRAWING CONTAINS INFORMATION THAT IS PROPRIETARY TO MOLEX INCORPORATED AND SHOULD NOT BE USED WITHOUT WRITTEN PERMISSION		



△ Dimension to accommodate PCI application.
All others per MSA guidelines.

SD UPDATE	DESCRIPTION
EC NO: UDT2001-0273	
DRWN: DIRKERS 2001/05/01	
CHKD: DIRKERS 2001/05/02	
APPR: DDOYE 2001/05/03	
REV	

QUALITY SYMBOLS	GENERAL TOLERANCES (UNLESS SPECIFIED)	
	mm	INCH
▽ = 0	± .005	± .005
▽ = 0	± .013	± .005
	ANGULAR ± 1/2°	
	DRAFT WHERE APPLICABLE MUST REMAIN WITHIN DIMENSIONS	

SCALE 3:1	DESIGN UNITS METRIC
DIMENSION STYLE IN/MM	
DRAWN BY DIRKERS	DATE 2001/01/10
CHECKED BY DIRKERS	DATE 2001/01/10
APPROVED BY RUSSELL	DATE 2001/01/10

THIRD ANGLE PROJECTION	REVISE ON CAD ONLY
TITLE SFP CAGE ASSEMBLY PCI VERSION	
MOLEX INCORPORATED	
MATERIAL NO 73927-0004	DOCUMENT NO SD-73927-004
SHEET NO 6 OF 6	
THIS DRAWING CONTAINS INFORMATION THAT IS PROPRIETARY TO MOLEX INCORPORATED AND SHOULD NOT BE USED WITHOUT WRITTEN PERMISSION	