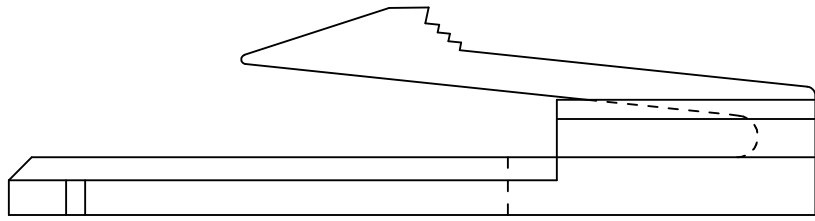
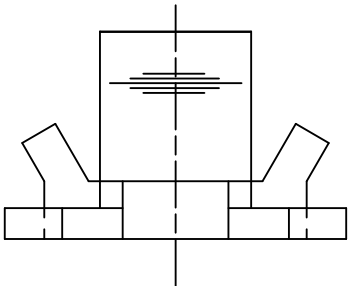
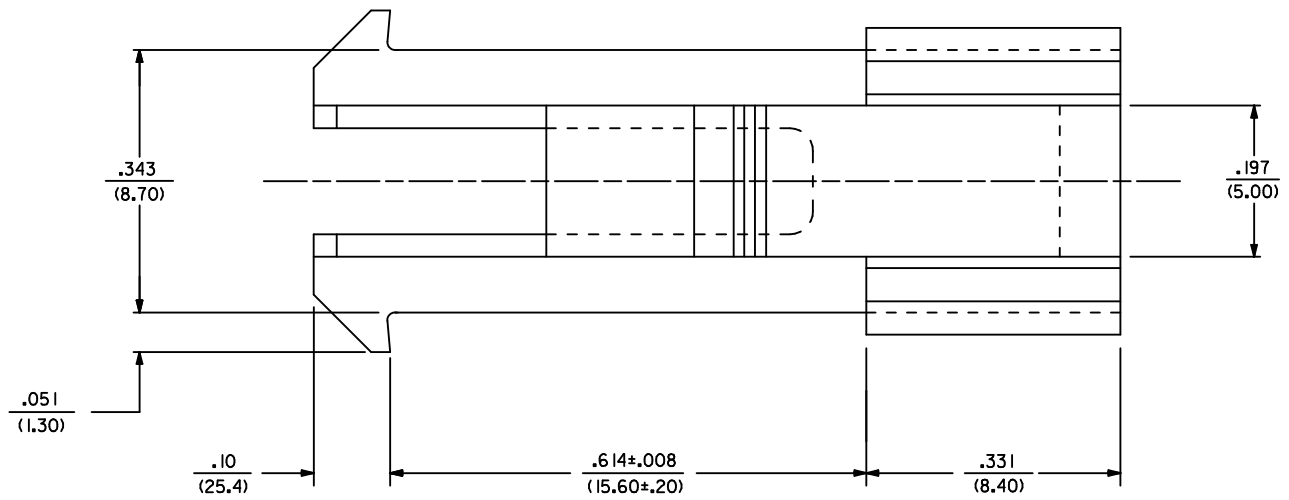
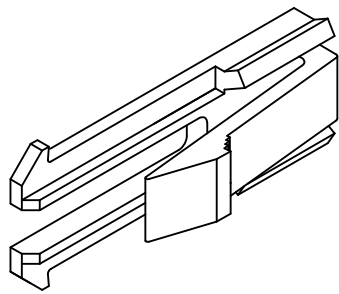


13 12 11 10 9 8 7 6 5 4 3 2 1



NOTES:

- 1) MATERIAL: UNFILLED POLYESTER, U.L. 94V-0, COLOR: BLACK.
- 2) PART IS FOR USE WITH PLUG HOUSING 30068.
- 3) PRODUCT SPECIFICATION: PS-5556-003.
- 4) PACKAGING SPECIFICATION: PK-43130-001.

ADDED PK-43130-001 EC NO: UCP2010-2159 DRWN: JAGUILAR 2010/02/25 CHKD: J BELL 2010/02/25 APPR: FSMITH 2010/03/08	DESCRIPTION B1	QUALITY SYMBOLS	GENERAL TOLERANCES (UNLESS SPECIFIED)	DIMENSION STYLE	SCALE	DESIGN UNITS	THIRD ANGLE PROJECTION															
		$\nabla = 0$ $\nabla = 0$ $\nabla = 0$	<table border="1"> <thead> <tr> <th></th> <th>mm</th> <th>INCH</th> </tr> </thead> <tbody> <tr> <td>4 PLACES</td> <td>\pm ---</td> <td>\pm ---</td> </tr> <tr> <td>3 PLACES</td> <td>\pm ---</td> <td>$\pm .010$</td> </tr> <tr> <td>2 PLACES</td> <td>± 0.25</td> <td>$\pm .015$</td> </tr> <tr> <td>1 PLACE</td> <td>± 0.38</td> <td>\pm ---</td> </tr> </tbody> </table>		mm	INCH	4 PLACES	\pm ---	\pm ---	3 PLACES	\pm ---	$\pm .010$	2 PLACES	± 0.25	$\pm .015$	1 PLACE	± 0.38	\pm ---	IN/MM	8:1	INCH	
			mm	INCH																		
		4 PLACES	\pm ---	\pm ---																		
3 PLACES	\pm ---	$\pm .010$																				
2 PLACES	± 0.25	$\pm .015$																				
1 PLACE	± 0.38	\pm ---																				
	DRAWN BY: R J F DATE: 10/13/1992 CHECKED BY: R J F DATE: 10/13/1992 APPROVED BY: FSMITH DATE: 10/13/1992	TITLE	MOUNTING EAR FOR PLUG HOUSING. (MINI-FIT T.P.A. SERIES)																			
	MATERIAL NO. 43130-0001 DOCUMENT NO. SD-43130-0001 SHEET NO. 1 OF 1	DRAFT WHERE APPLICABLE MUST REMAIN WITHIN DIMENSIONS	MOLEX INCORPORATED																			

12 11 10 9 8 7 6 5 4 3 2 1