

Voltage selector switch with fuseholder, 6 stages, serie-parallel, panel mounting



### Description

- Voltage Selector, with fuseholder, 6 stages
- Series-parallel connections
- For 5 x 20 mm fuse-links
- Solder terminals or quick connect terminals 2.8 x 0.5 mm

### Standards

- IEC 61058-2-5
- UL 508
- CSA C22.2 no. 55

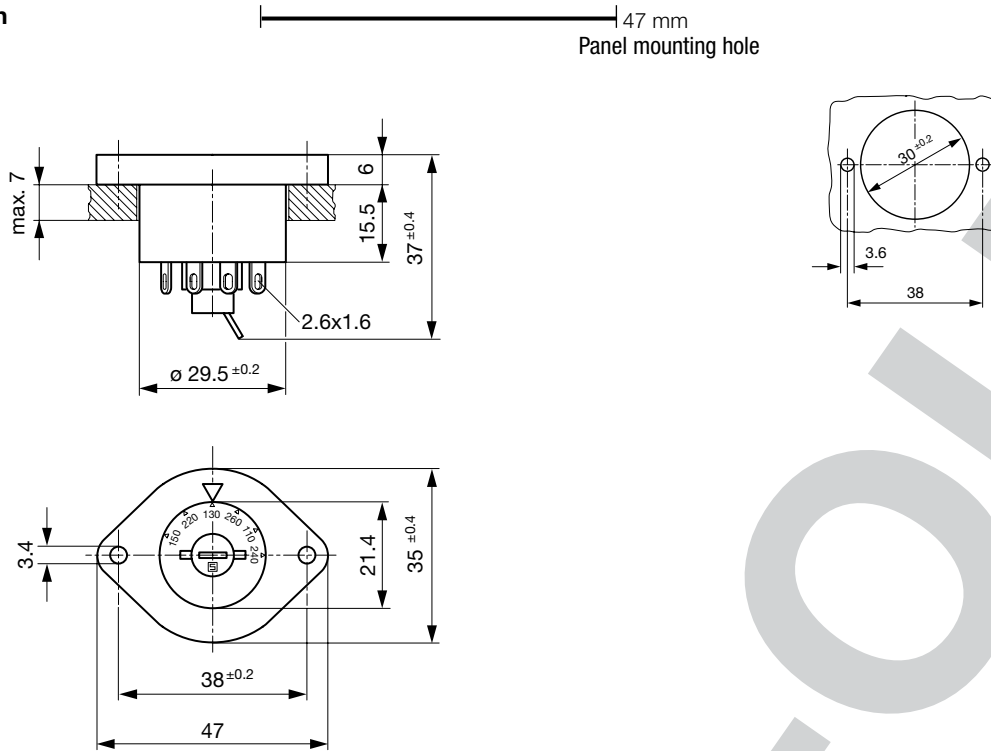
### References

We recommend for new applications the type [SWZ1 \(Frontpl\)](#)  
Last order date: 31.12.2016

### Technical Data

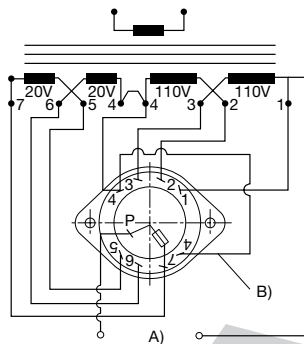
|                           |                                                                    |                                 |                                                               |                                                              |
|---------------------------|--------------------------------------------------------------------|---------------------------------|---------------------------------------------------------------|--------------------------------------------------------------|
| Ratings                   | IEC: 6.3 A / 250 VAC; 50 Hz                                        | Solderability                   | 350 °C / 2 sec acc. to IEC 60068-2-20,<br>Test Ta, method 2   |                                                              |
|                           | UL: 10 A / 250 VAC; 60 Hz                                          |                                 | Resistance to Soldering Heat                                  | 350 °C / 5 sec acc. to IEC 60068-2-20,<br>Test Tb, method 1B |
|                           | CSA: 6.3 A / 250 VAC; 60 Hz                                        |                                 |                                                               | Insulation Resistance                                        |
| Mounting                  | Panel Mount from front side                                        | Contact Resistance              | < 10 mΩ at 20 mV                                              |                                                              |
| Fastening                 | Screw-on mounting                                                  | Dielectric Strength             | > 2kVAC between L-N<br>> 4kVAC between L/N-PE<br>(1min; 50Hz) |                                                              |
| Terminal                  | Solder or Quick-Connect                                            | Clearance and Creepage Distance | > 3mm<br>> 8mm between L/N-PE                                 |                                                              |
| Number of Stages          | 6                                                                  | Resistance to Vibration         | acc. to IEC 60068-2-6, test Fc                                |                                                              |
| Lifetime                  | 300 operating cycles (without load)                                |                                 |                                                               |                                                              |
| Shock-Safe Category       | PC2                                                                |                                 |                                                               |                                                              |
| Protection Class          | Suitable for appliances with protection class II acc. to IEC 61140 |                                 |                                                               |                                                              |
| Allowable Operation Temp. | -40 °C to 70 °C                                                    |                                 |                                                               |                                                              |
| Climatic Category         | 25/85/21 acc. to IEC 60068-1                                       |                                 |                                                               |                                                              |
| Material: Socket          | Thermoplastic, black, UL 94V-0                                     |                                 |                                                               |                                                              |
| Weight                    | 23.2 g                                                             |                                 |                                                               |                                                              |

Dimension



Diagrams

Reverse view



A) Power mains  
B) External connection

All Variants

| Letterings |         |         |         |         |         | Terminal                             | Order Number |
|------------|---------|---------|---------|---------|---------|--------------------------------------|--------------|
| Stage 1    | Stage 2 | Stage 3 | Stage 4 | Stage 5 | Stage 6 |                                      |              |
| 150        | 220     | 130     | 260     | 110     | 240     | Solder terminals                     | 0033.6001    |
|            |         |         |         |         |         | Solder terminals                     | 0033.6014    |
| 150        | 220     | 130     | 260     | 110     | 240     | Quick connect terminals 2.8 x 0.5 mm | 0033.6101    |
|            |         |         |         |         |         | Quick connect terminals 2.8 x 0.5 mm | 0033.6114    |

Availability for all products can be searched real-time: <http://www.schurter.com/Stock-Check/Stock-Check-SCHURTER>

Packaging Unit 50 Pcs