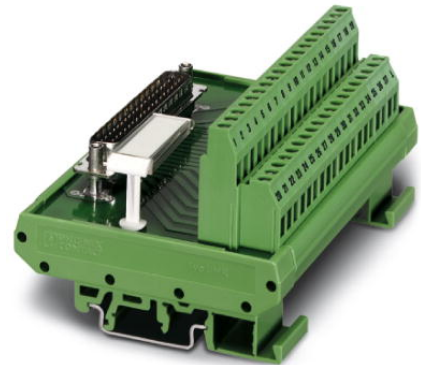



FLKM-D15 SUB/B

Order No.: 2281199

The illustration shows version FLKM-D37 SUB/S

<http://eshop.phoenixcontact.de/phoenix/treeViewClick.do?UID=2281199>VARIOFACE module, with screw connection and D-Subminiature
socket strip, for mounting on NS 35/7.5 or NS 32, 15-pos.

Commercial data	
GTIN (EAN)	 4 017918 054625
sales group	I011
Pack	10 pcs.
Customs tariff	85369010
Catalog page information	Page 248 (IF-2007)

Product notesWEEE/RoHS-compliant since:
06/08/2006

<http://www.download.phoenixcontact.com>
Please note that the data given here has been taken from the online catalog. For comprehensive information and data, please refer to the user documentation. The General Terms and Conditions of Use apply to Internet downloads.

Technical data	
General data	
Nominal voltage U_N	125 V AC/DC
Max. current carrying capacity per branch	2.5 A
	1.5 A (with even load on all branches)
Number of positions	15

Width	45 mm
Height	77 mm
Depth	58.5 mm
Ambient temperature (operation)	-20 °C ... 50 °C
Ambient temperature (storage/transport)	-20 °C ... 70 °C
Test voltage	800 V (50 Hz, 1 min.)
Mounting position	Any
Standards/regulations	IEC 60664
	DIN EN 50178
	IEC 62103
Pollution degree	2
Surge voltage category	II

Connection data

Connection 1	PCB connection
Connection in acc. with standard	IEC / EN
Type of connection	Screw connection
Conductor cross section solid min.	0.2 mm ²
Conductor cross section solid max.	4 mm ²
Conductor cross section stranded min.	0.2 mm ²
Conductor cross section stranded max.	2.5 mm ²
Conductor cross section AWG/kcmil min.	24
Conductor cross section AWG/kcmil max	12
Stripping length	8 mm
Screw thread	M3
Connection 2	D-SUB connection
Type of connection	Pluggable
Number of positions	15

Certificates / Approvals



Certification

CUL, GOST, UL

Accessories		
Item	Designation	Description
Cable/conductor		
2302434	CABLE D-SUB-S-S-S/.../.../...	Shielded round cable, assembled with two D-SUB male connectors, variable cable length
2302340	CABLE D-SUB-S/.../.../...	Shielded round cable, assembled with one D-SUB male and one female connector, variable cable length
2926438	CABLE-D-15SUB/M/OE/0,25/S/0,5M	Shielded cable with a 15-pos. D-SUB pin strip and one open end. The individual wires are labeled 1 to 15 and fitted with ferrules. The braided shield is routed to a separate cable end. Cable length: 0.5 m.
2926441	CABLE-D-15SUB/M/OE/0,25/S/1,0M	Shielded cable with a 15-pos. D-SUB pin strip and one open end. The individual wires are labeled 1 to 15 and fitted with ferrules. The braided shield is routed to a separate cable end. Cable length: 1 m.
2926454	CABLE-D-15SUB/M/OE/0,25/S/1,5M	Shielded cable with a 15-pos. D-SUB pin strip and one open end. The individual wires are labeled 1 to 15 and fitted with ferrules. The braided shield is routed to a separate cable end. Cable length: 1.5 m.
2926467	CABLE-D-15SUB/M/OE/0,25/S/2,0M	Shielded cable with a 15-pos. D-SUB pin strip and one open end. The individual wires are labeled 1 to 15 and fitted with ferrules. The braided shield is routed to a separate cable end. Cable length: 2 m.
2926470	CABLE-D-15SUB/M/OE/0,25/S/3,0M	Shielded cable with a 15-pos. D-SUB pin strip and one open end. The individual wires are labeled 1 to 15 and fitted with ferrules. The braided shield is routed to a separate cable end. Cable length: 3 m.
2926483	CABLE-D-15SUB/M/OE/0,25/S/4,0M	Shielded cable with a 15-pos. D-SUB pin strip and one open end. The individual wires are labeled 1 to 15 and fitted with ferrules. The braided shield is routed to a separate cable end. Cable length: 4 m.
2926496	CABLE-D-15SUB/M/OE/0,25/S/6,0M	Shielded cable with a 15-pos. D-SUB pin strip and one open end. The individual wires are labeled 1 to 15 and fitted with ferrules. The braided shield is routed to a separate cable end. Cable length: 6 m.
2302052	CABLE-D15SUB/B/S/ 50/ KONFEK/S	Round shielded cable set, with 15-pos. D-SUB female and male connectors, cable length: 0.5 m
2302065	CABLE-D15SUB/B/S/100/ KONFEK/S	Round shielded cable set, with 15-pos. D-SUB female and male connectors, cable length: 1 m
2302078	CABLE-D15SUB/B/S/150/ KONFEK/S	Round shielded cable set, with 15-pos. D-SUB female and male connectors, cable length: 1.5 m
2302081	CABLE-D15SUB/B/S/200/ KONFEK/S	Round shielded cable set, with 15-pos. D-SUB female and male connectors, cable length: 2 m
2302094	CABLE-D15SUB/B/S/300/ KONFEK/S	Round shielded cable set, with 15-pos. D-SUB female and male connectors, cable length: 3 m

2302104	CABLE-D15SUB/B/S/400/ KONFEK/S	Round shielded cable set, with 15-pos. D-SUB female and male connectors, cable length: 4 m
2302117	CABLE-D15SUB/B/S/600/ KONFEK/S	Round shielded cable set, with 15-pos. D-SUB female and male connectors, cable length: 6 m
General		
2900910	CABLE-D-15SUB-M-OE-0,25- S/...	Shielded cable with a 15-pos. D-SUB pin strip and one open end. The individual wires are labeled 1 to 15 and fitted with ferrules. The braided shield is routed to a separate cable end. Cable length: variable.

Address

PHOENIX CONTACT Deutschland GmbH
Flachmarktstr. 8
32825 Blomberg, Germany
Phone +49 5235 3 12000
Fax +49 5235 3 41200
<http://www.phoenixcontact.de>



© 2011 Phoenix Contact
Technical modifications reserved;