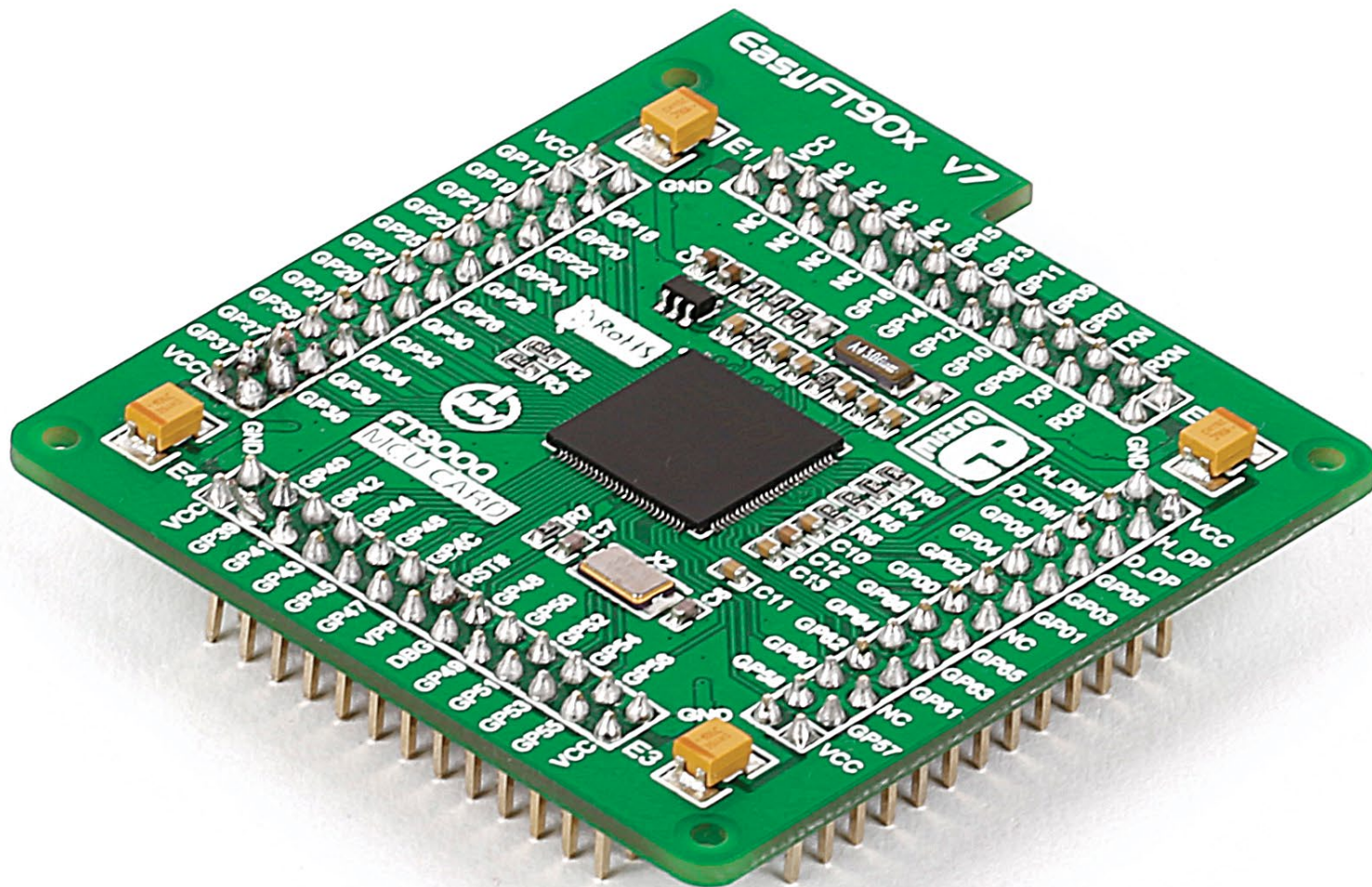


# EasyFT90x v7 MCU card with **FT900 QFN-100**

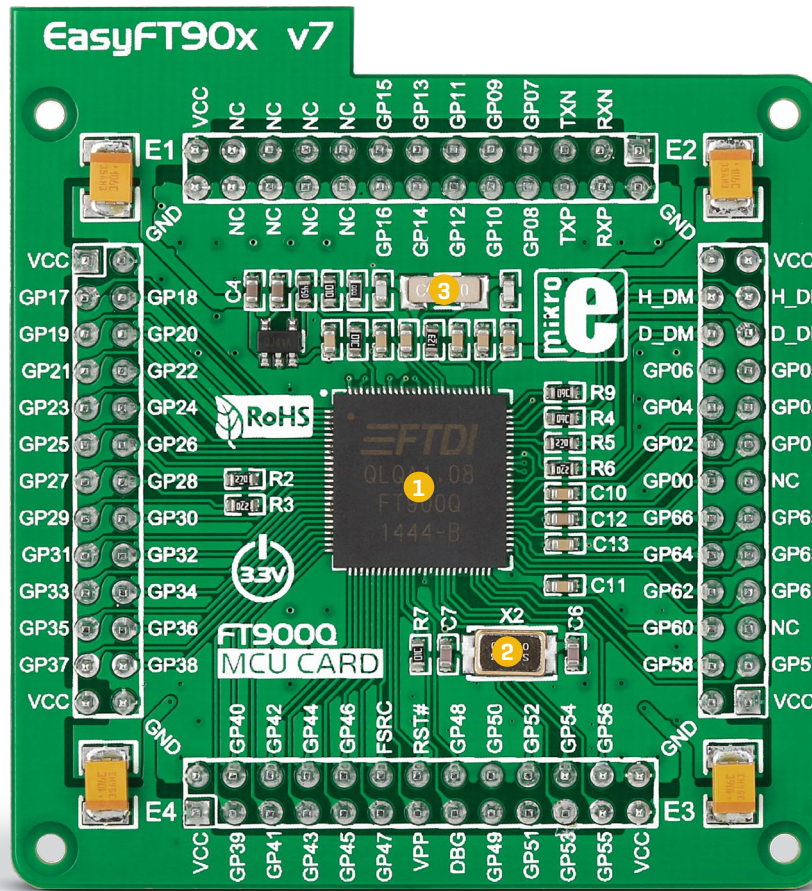


# MCU card information

This is the default MCU card that comes with EasyFT90x v7. It contains the FT900 microcontroller with on-chip peripherals. After testing and building

the final program, this card can also be taken out of the board socket and used in your final device.

Figure 1:  
MCU card  
with FT900



- 1 FT900 has 100MHz maximum frequency, 256KB of Flash, 64KB of on-chip data memory and 256KB of Shadow program memory. It has an integrated Parallel Camera Interface, Ethernet, USB (Host, Device), 65 General purpose I/O pins, 4 x 16-bit timers with 32-bit watchdog function, 7 Analog Input pins (ADC), 2 UARTs, I<sup>2</sup>S master/slave interface, internal slow clock oscillator, 2 x I<sup>2</sup>C [master/slave], SPI [master/slave] and 2xCAN controllers, and a debug interface.
- 2 12MHz crystal oscillator. We carefully chose the most convenient crystal value that provides clock frequency for the PLL multipliers.
- 3 MCU card also contains 32.768 kHz crystal oscillator which provides external clock waveform for the internal RTCC module.

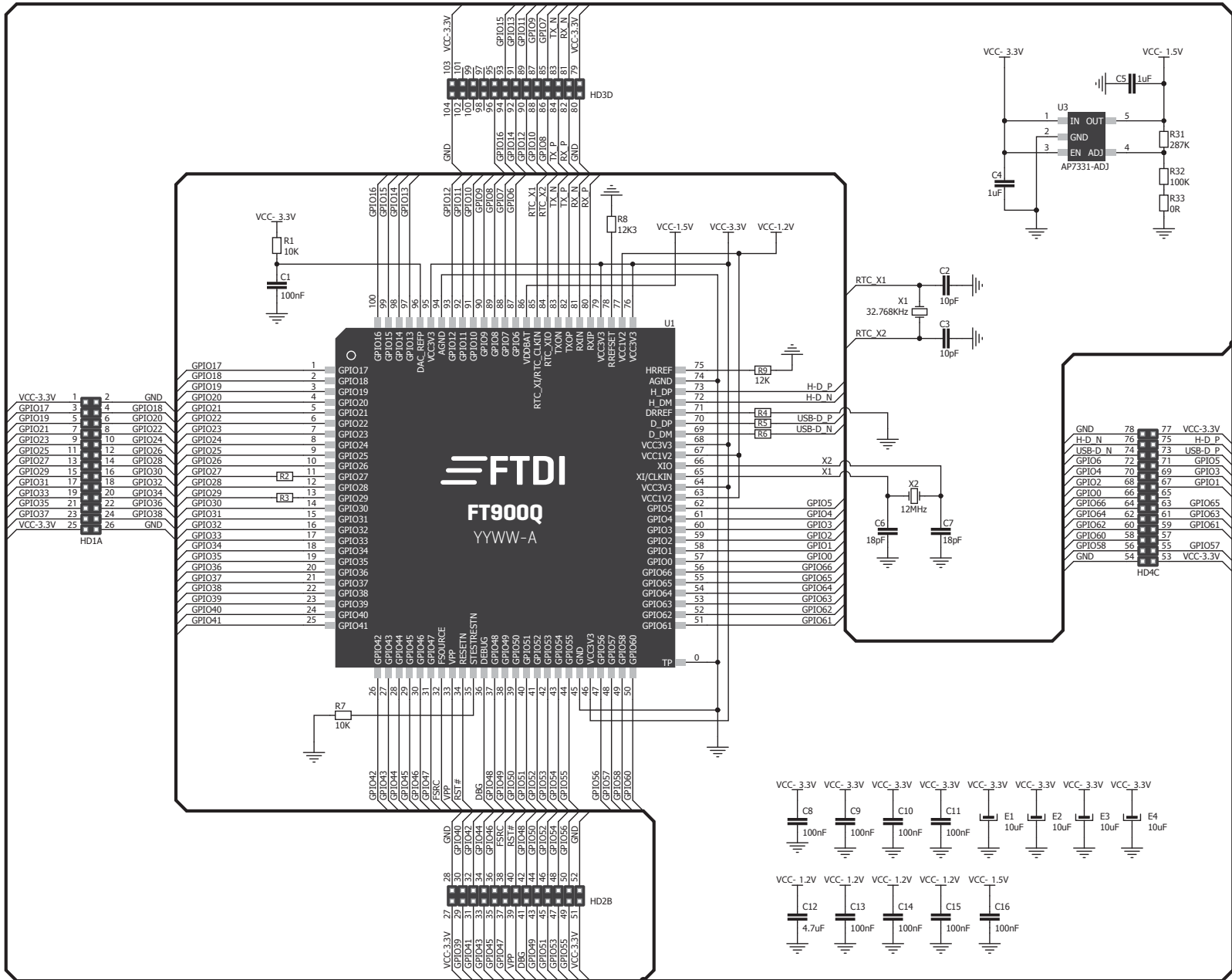


Figure 2: MCU card schematic

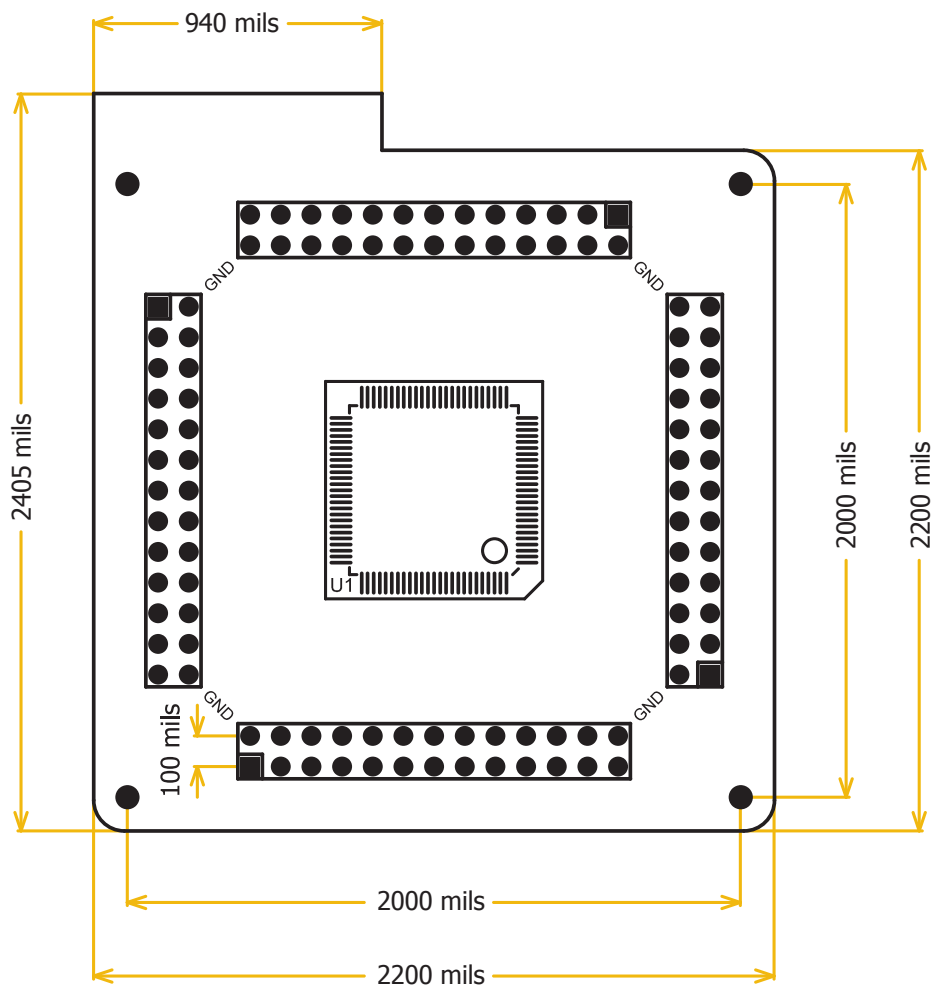
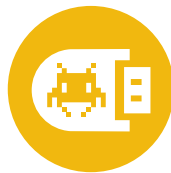


Figure 3: MCU card dimensions



If you want to learn more about our products, please visit our website at [www.mikroe.com](http://www.mikroe.com)

If you are experiencing some problems with any of our products or just need additional information, please place your ticket at [www.mikroe.com/support](http://www.mikroe.com/support)

If you have any questions, comments or business proposals, do not hesitate to contact us at [office@mikroe.com](mailto:office@mikroe.com)



Designed by  
MikroElektronika Ltd.  
[www.mikroe.com](http://www.mikroe.com)

ver. 1.00