

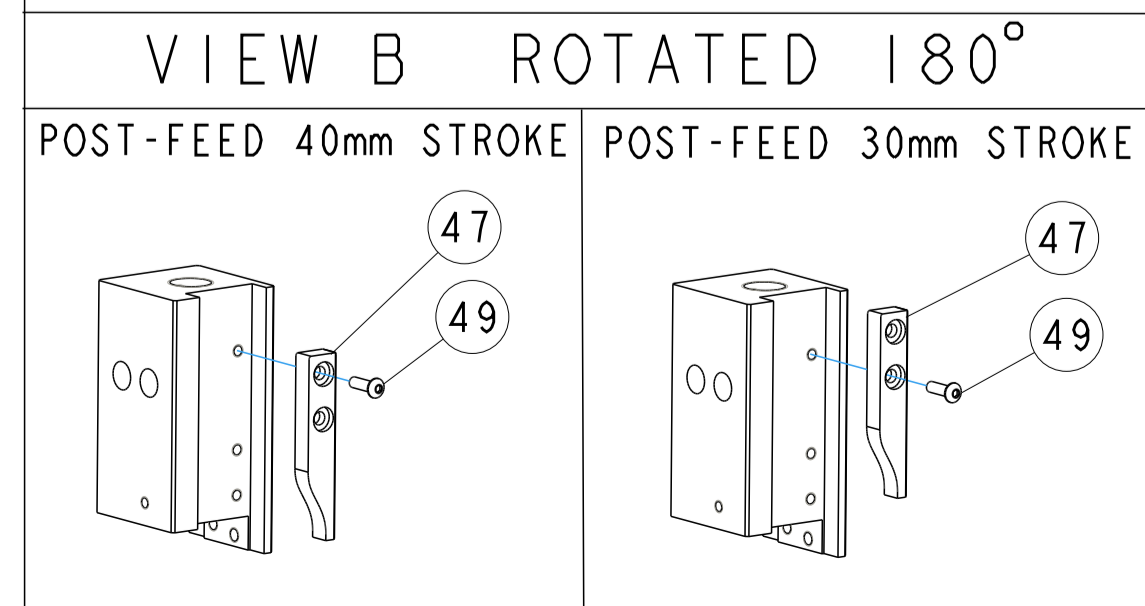
PART NUMBER	REV	TERMINATOR	FEED TYPE	DESCRIPTION
1531063-1	B	BENCH & LEADMAKER	MECH POST FEED	HDI APPLICATOR
7-1531063-1	B	BENCH & LEADMAKER	MECH POST FEED	-1 AND SPARE PARTS
7-1531063-7	B	-	-	SPARE PARTS KIT

CRIMP DATA	TE TERMINAL	TE CRIMP SPECS
TERMINAL NAME: .250 SERIES FASTON TAB SHORT (AMPLIVAR)		
CRIMP	SIZE	TYPE
WIRE	2.54 [.100 IN]	F
INSUL	4.06 [.160 IN]	OV
WIRE STRIP LENGTH 6.6 [.260 IN]		APPL INSTRUCTIONS 408-8323 & 408-8490
TERMINAL APPL SPEC	NONE	FEED 30.30 [.193 IN]

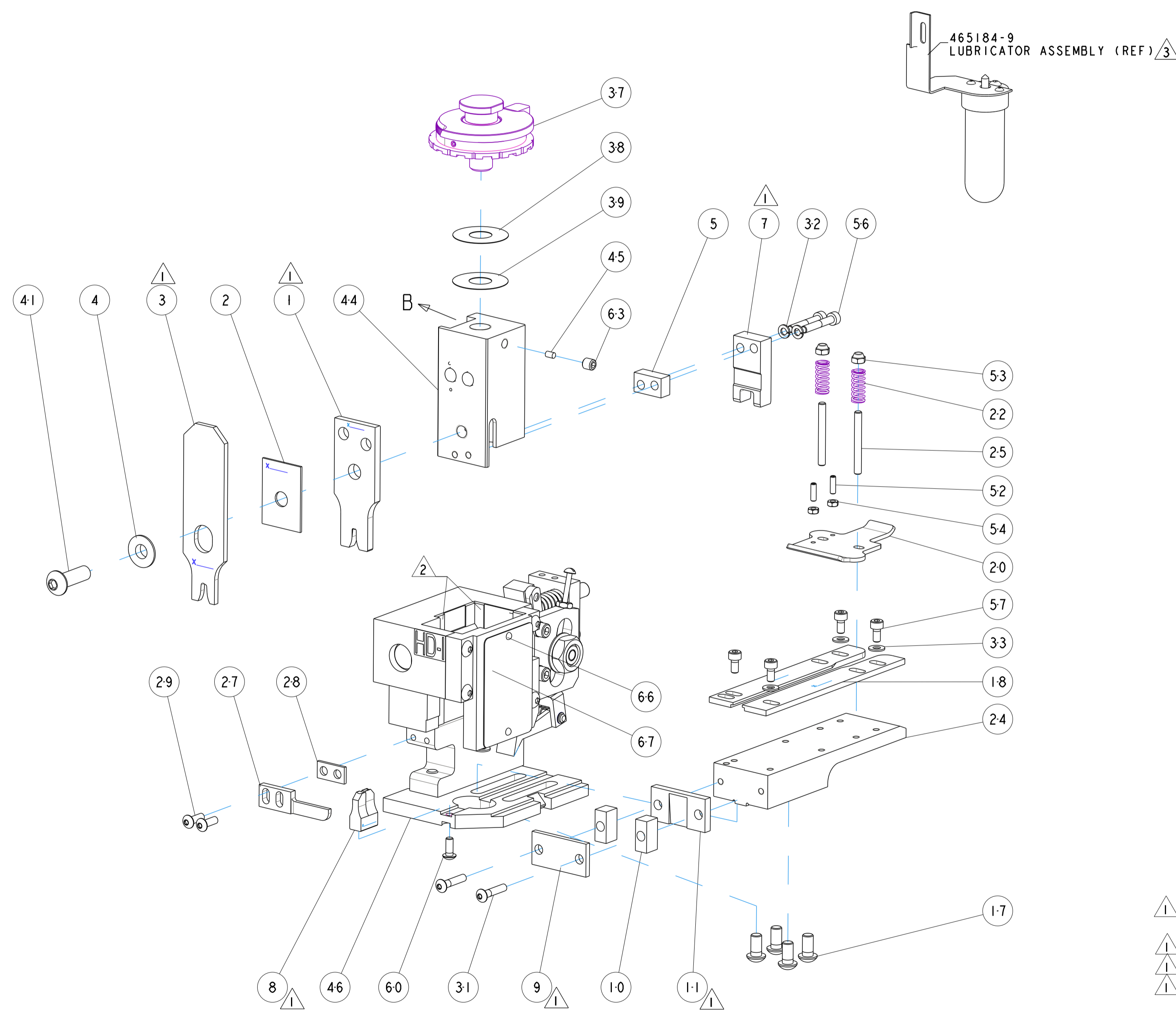
TERMINALS APPLIED			
1955414	-	-	-
-	-	-	-
-	-	-	-
-	-	-	-
-	-	-	-

WIRE SIZE	CRIMP HEIGHT	REF SETTING
4360	1.83 ± 0.05 [.072 ± .002 IN]	B0
3869	1.79 ± 0.05 [.070 ± .002 IN]	B2
3810	1.75 ± 0.05 [.069 ± .002 IN]	B5
3215	1.67 ± 0.05 [.066 ± .002 IN]	C1
2665	1.58 ± 0.05 [.062 ± .002 IN]	D7
2390	1.54 ± 0.05 [.061 ± .002 IN]	C9
2150	1.51 ± 0.05 [.059 ± .002 IN]	D0
1935	1.48 ± 0.05 [.058 ± .002 IN]	D3
1640	1.44 ± 0.05 [.057 ± .002 IN]	D5
1520	1.42 ± 0.05 [.056 ± .002 IN]	D7
1391	1.40 ± 0.05 [.055 ± .002 IN]	E0

- 1 RECOMMENDED SPARE PARTS
- 2 GREASE RAM, CAM, CAM FOLLOWER AND FEED ROD LIGHTLY.
- 3 CERTAIN TERMINALS REQUIRE LUBRICATION. REFER TO THE APPLICATOR INSTRUCTION SHEET FOR MORE INFORMATION.
- 4. LUBRICATE DAILY PER THE APPLICATOR INSTRUCTION SHEET SUPPLIED WITH THE APPLICATOR.



*** WARNING**
 ON INSTALLATION, SET WIRE DISC TO LARGEST WIRE SIZE SETTING. USE OF SETTINGS BELOW MIN. REQUIRED CRIMP HEIGHT SETTING WILL CAUSE DAMAGE TO CRIMP TOOLING.



LOC	DIST	REV	DESCRIPTION	DATE	DWN	APVD
A	66	B	ECR-11-005451	23MAR2011	RK	TE

-	1	1	1338705-4	DOCUMENTATION PACKAGE	71
-	1	1	461264-5	PLATE, IDENTIFICATION	67
-	2	2	21017-2	SCREW, DRIVE	66
-	1	1	3-18031-0	SCR, SET, CUP POINT M6 X 6.0	63
-	1	1	18024-7	SCR, BTN SKT HD CAP (M4 X 10.0)	60
-	4	4	1-18023-0	SCR, SKT HD CAP M4 X 8.0	57
-	2	2	1-18023-5	SCR, SKT HD CAP M4 X 25.0	56
-	2	2	18029-1	NUT, HEX, REG M3	54
-	2	2	986965-1	NUT, LOCK, HEX, TORQUE (M4)	53
-	2	2	2-18032-2	SCR, SET, FLT POINT M3 X 10.0	52
-	1	1	18024-3	SCR, BTN SKT HD CAP (M3 X 10.0)	49
-	1	1	1338676-1	CAM, UNIVERSAL POST-FEED	47
-	1	1	1338662-1	SUB ASSY, APPLICATOR FRAME	46
-	1	1	690191-1	PLUG, NYLON	45
-	1	1	1320998-1	RAM	44
-	1	1	2-18024-6	SCR, BTN SKT HD CAP (M8 X 25.0)	41
-	1	1	690125-1	SHIM SUB-ASSY	39
-	1	1	469367-1	SHIM	38
-	1	1	879103-2	FINE ADJUST HEAD ASSEMBLY	37
-	4	4	18027-2	WASHER, FLAT, REG M4	33
-	2	2	18025-2	WASHER, SPRG LOCK, REG M4	32
-	2	2	1-18024-0	SCR, BTN SKT HD CAP (M4 X 20.0)	31
-	2	2	18024-8	SCR, BTN SKT HD CAP (M4 X 12.0)	29
-	1	1	3-690451-2	SPACER, STRIPPER	28
-	1	1	240639-1	STRIPPER (MACHINING)	27
-	2	2	1320906-1	STUD, THREADED	25
-	1	1	1320995-1	PLATE, STRIP GUIDE	24
-	2	2	4-22281-1	SPRING, DRAG	22
-	1	1	1338665-1	DRAG	20
-	1	1	458030-4	STRIP GUIDE, REAR	18
-	1	1	458031-4	STRIP GUIDE, FRONT	18
-	4	4	1-18024-8	SCR, BTN SKT HD CAP (M6 X 12.0)	17
-	1	1	240644-1	PLATE, REAR SHEAR	11
-	2	2	6-240645-9	SPACER, SHEAR PLATE	10
-	1	1	240642-1	PLATE, FRONT SHEAR	9
-	1	2	1333218-1	ANVIL, COMBINATION	8
-	1	1	8-240651-4	BLADE, SLUG	7
-	-	-	-	-	6
-	1	1	2-240641-7	SPACER	5
-	1	1	238009-1	BLOCK, FL CRIMPER SPACER	4
-	1	2	2-655621-5	OVERLAPPING CRIMPER, INSUL HD TYP	3
-	1	1	1-455888-0	SPACER, CRIMPER	2
-	1	2	456407-7	CRIMPER, WIRE PREMIUM	1

DIMENSIONS:	TOLERANCES UNLESS OTHERWISE SPECIFIED:	APVD	NAME	SIZE	CAGE CODE	DRAWING NO	RESTRICTED TO
MM [INCHES]	0 PLC ±.1 1 PLC ±0.1 2 PLC ±0.01 3 PLC ±0.001 4 PLC ±0.0001 ANGLES ±.1	W. DEMING	FINE ADJUST END FEED HDI APPLICATOR	A1	00779	1531063	-
MATERIAL:		WEIGHT:	CUSTOMER ACCESSIBLE PRODUCTION DRAWING		SCALE	3:5	SHEET 1 OF 1