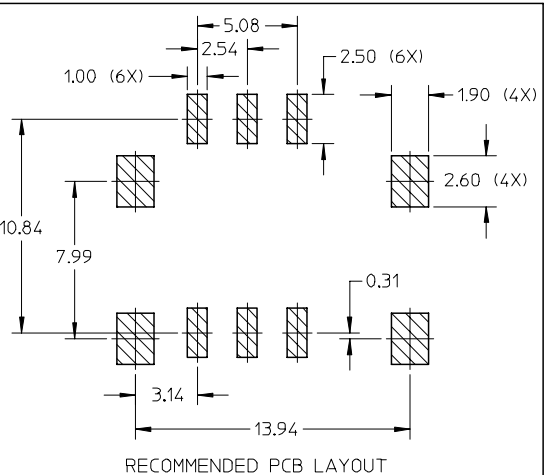


SECTION Z-Z

- NOTES:
- MATERIAL
HOUSING: LCP, GLASS-FILLED, UL 94V-0, COLOR, BLACK.
TERMINAL: THICKNESS 0.12MM, PHOSPHOR BRONZE.
SHELL: STAINLESS STEEL.
 - FINISH:
TERMINAL CONTACT AREA: 0.75 MICRON GOLD MIN OVERALL 1.25 MICRON NICKEL MIN.
TERMINAL SOLDER AREA: GOLD FLASH OVERALL 1.25 MICRON NICKEL MIN.
SHELL: GOLD FLASH OVERALL 1.25 MICRON NICKEL MIN.
 - COPLANARITY: 0.1MM MAX AMONG SOLDER TAILS AND FITTING NAILS.
 - PRODUCT SPECIFICATION: PS-47481-001.
 - DATE CODE (4 DIGITS)

* * * *	DAY (1--7)
---	WEEK (01--52)
---	YEAR (6--9)
 - THE PART 474810001 COMPLIANT TO RoHS DIRECTIVE 2002/95/EC AND ELV 200/53/EC.



NEW DRAWING EC NO: SH2007-0315 DRWN: BWAN 2007/01/30 CHKD: XIXU 2007/01/31 APPR: JNCHEN 2007/02/08	QUALITY SYMBOLS ▽=0 ◁=0	GENERAL TOLERANCES (UNLESS SPECIFIED)		DIMENSION STYLE MM ONLY	SCALE 4:1	DESIGN UNITS METRIC	THIRD ANGLE PROJECTION	
		4 PLACES ± --- ± ---	3 PLACES ± --- ± ---	2 PLACES ± 0.15 ± ---	1 PLACE ± --- ± ---	DRAWN BY BWAN	DATE 2006/08/29	TITLE 2.5 PITCH SIM CONNECTOR
		ANGULAR ± 2 °		APPROVED BY JNCHEN	DATE 2006/08/29	MOLEX INCORPORATED		SHEET NO. 1 OF 1
		DRAFT WHERE APPLICABLE MUST REMAIN WITHIN DIMENSIONS		MATERIAL NO. 474810001	DOCUMENT NO. SD-47481-001			