

## DETAILS

<b>Product Number</b>	CA14366_FLARE-MAXI-TAPE
<b>Family</b>	Flare
<b>Type</b>	Assembly
<b>Color</b>	clear
<b>Diameter</b>	33,9 + 33,3 mm
<b>Height</b>	16,9 mm
<b>Style</b>	rectang
<b>Optic Material</b>	PMMA
<b>Holder Material</b>	
<b>Fastening</b>	tape, pin
<b>Status</b>	production ready
<b>ROHS Compliant</b>	Yes
<b>Date Updated</b>	25/09/2015



## OPTICAL PROPERTIES

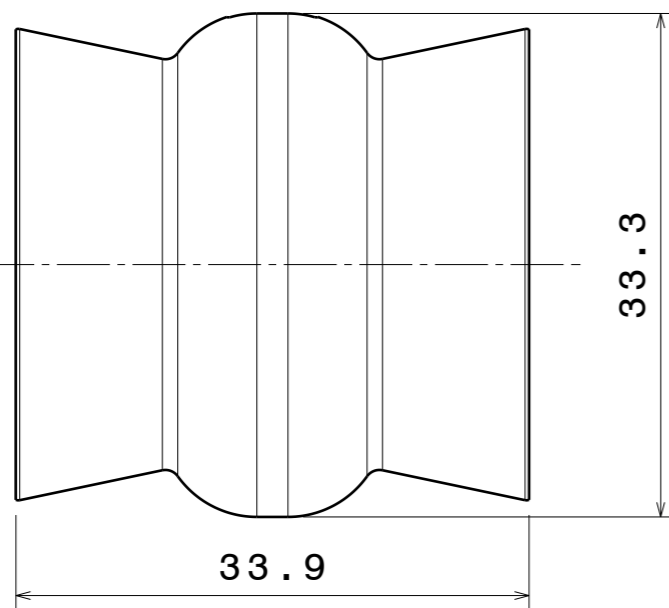
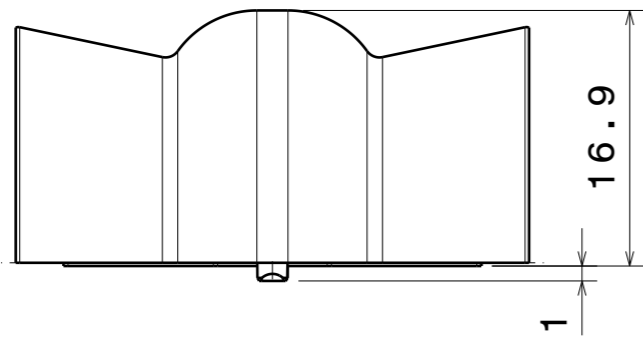
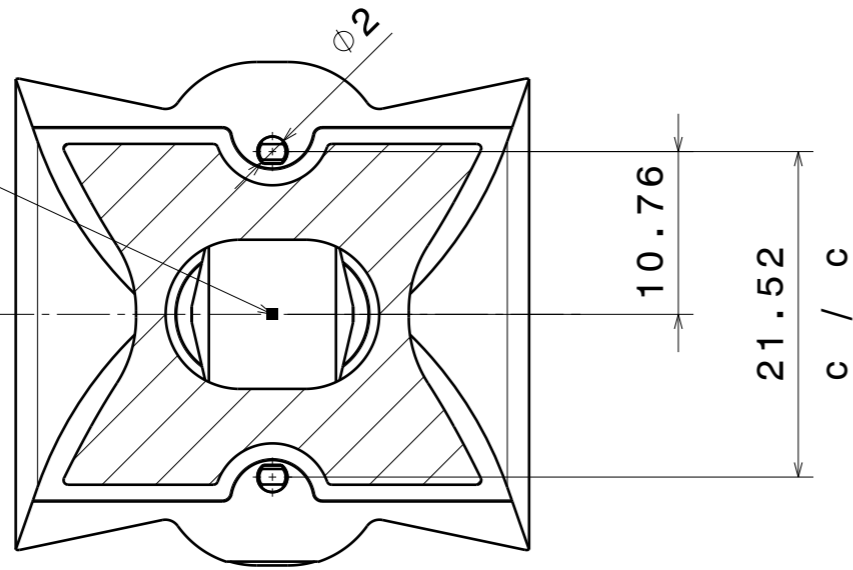
LED	Viewing Angle	Light Beam	Efficiency	cd/lm	Connector
XP-G	105+11 deg	REC-class	94 %	2.500	-
XP-G2	96+10 deg	REC-class	94 %	3.100	-
XM-L	96+15 deg	REC-class	94 %	2.100	-
XT-E	96+10 deg	REC-class	94 %	2.500	-
XM-L2	105+13 deg	REC-class	96 %	-	-
XP-L	115+13 deg	REC-class	94 %	2.100	-
XHP35 HD	sim: 89+14	REC-class	sim: 91 %	sim: 2.200	-
XHP35 HI	sim: 82+10	REC-class	sim: 93 %	sim: 3.200	-
XP-L2	99+13 deg	REC-class	94 %	2.000	-
H35C1 (LEMWA33)	99+10 deg	REC-class	94 %	3.000	-
LUXEON H50-2	sim: 9.5+64	REC-class	sim: 92 %	sim: 3.600	-
LUXEON T	96+10 deg	REC-class	92 %	2.900	-
LUXEON Rebel ES	91+10 deg	REC-class	94 %	2.800	-
LUXEON TX	96+9 deg	REC-class	94 %	3.180	-
NCSxx19B	98+9 deg	REC-class	94 %	3.500	-
NVSxx19B/NVSxx19C	98+11 deg	REC-class	94 %	2.400	-
Oslon Square PC	98+13 deg	REC-class	94 %	2.500	-
LH351Z	94+8.8 deg	REC-class	94 %	3.600	-

Led position

Bottom view

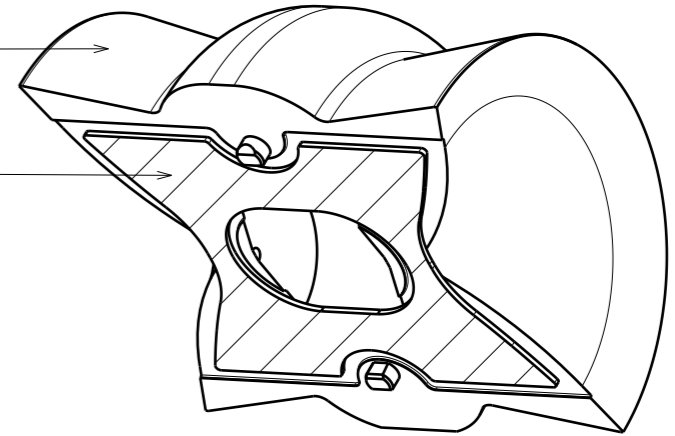
Front view

Top view



Lens

Tape



Isometric view

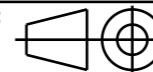
Material: PMMA 8N / PU 2-SIDED ADHESIVE FOAM TAPE

Tolerances if not otherwise shown  
 According to DIN ISO 2768-1  
 Linear measures:  
 Up to 30mm class M, otherwise class C.  
 According to DIN ISO 2768-2  
 Form and position: class L



LediL Oy  
 Salorankatu 10  
 FIN 24240 SALO  
 Finland

THIRD ANGLE PROJECTION:



DRAWING TITLE

FLARE-MAXI (WITH TAPE)

SIZE

PART NUMBER

A3

FLARE-MAXI (WITH TAPE)

SCALE

1:1

WEIGHT

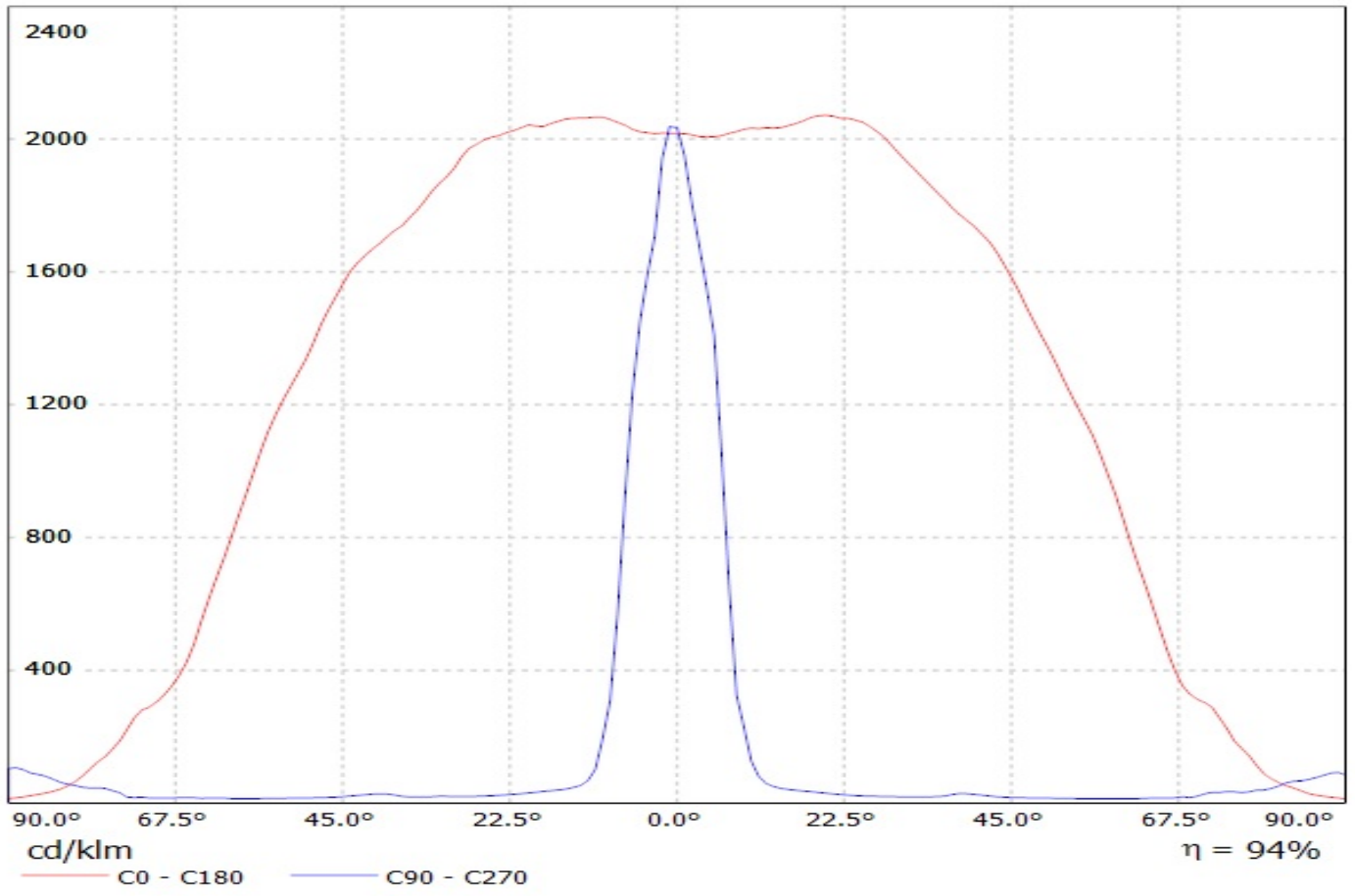
-

SHEET

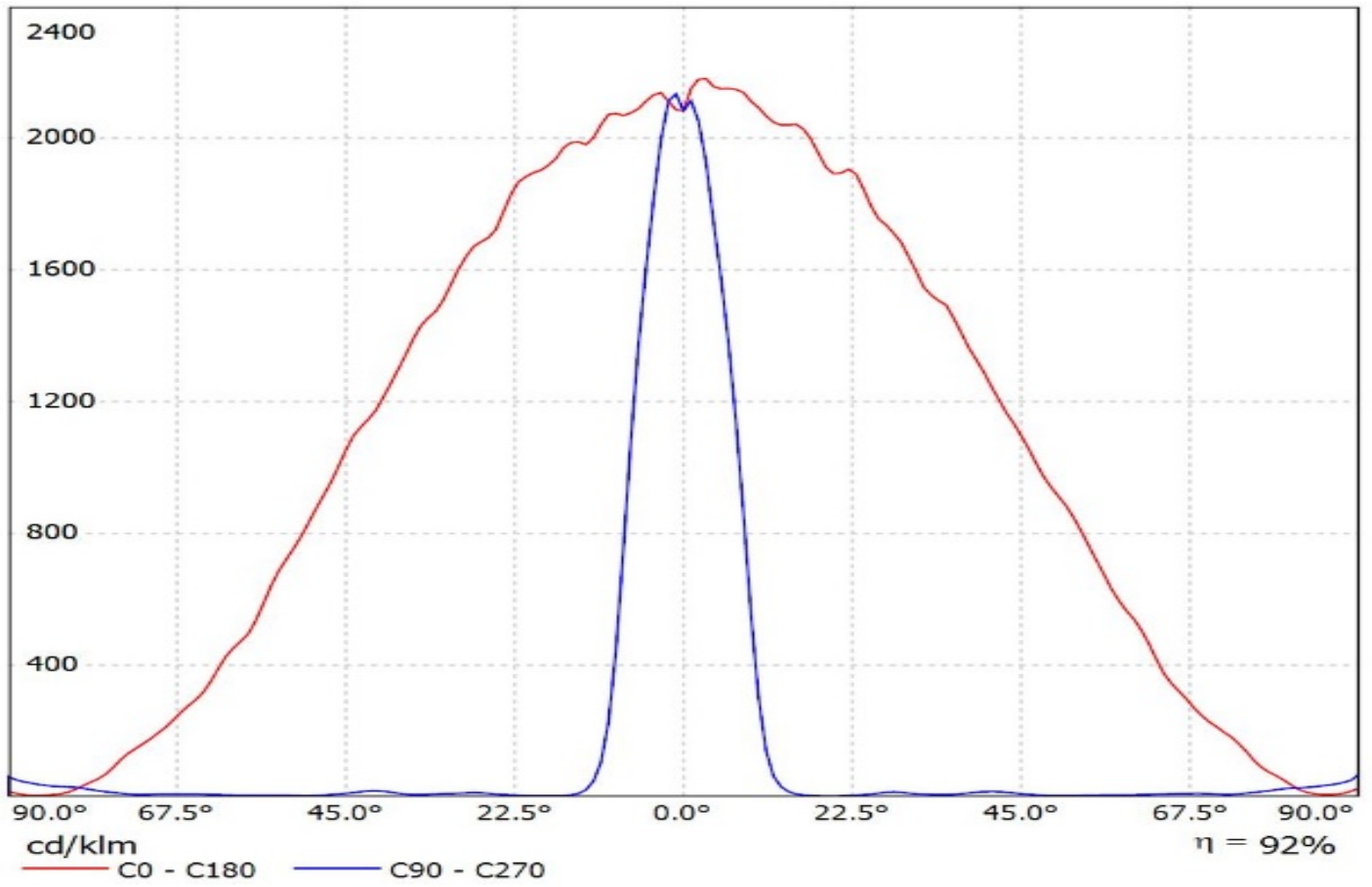
1/1

This drawing is the property  
 of LEDiL Oy. It may not be  
 reproduced, copied or  
 communicated without a written  
 agreement with LEDiL Oy.

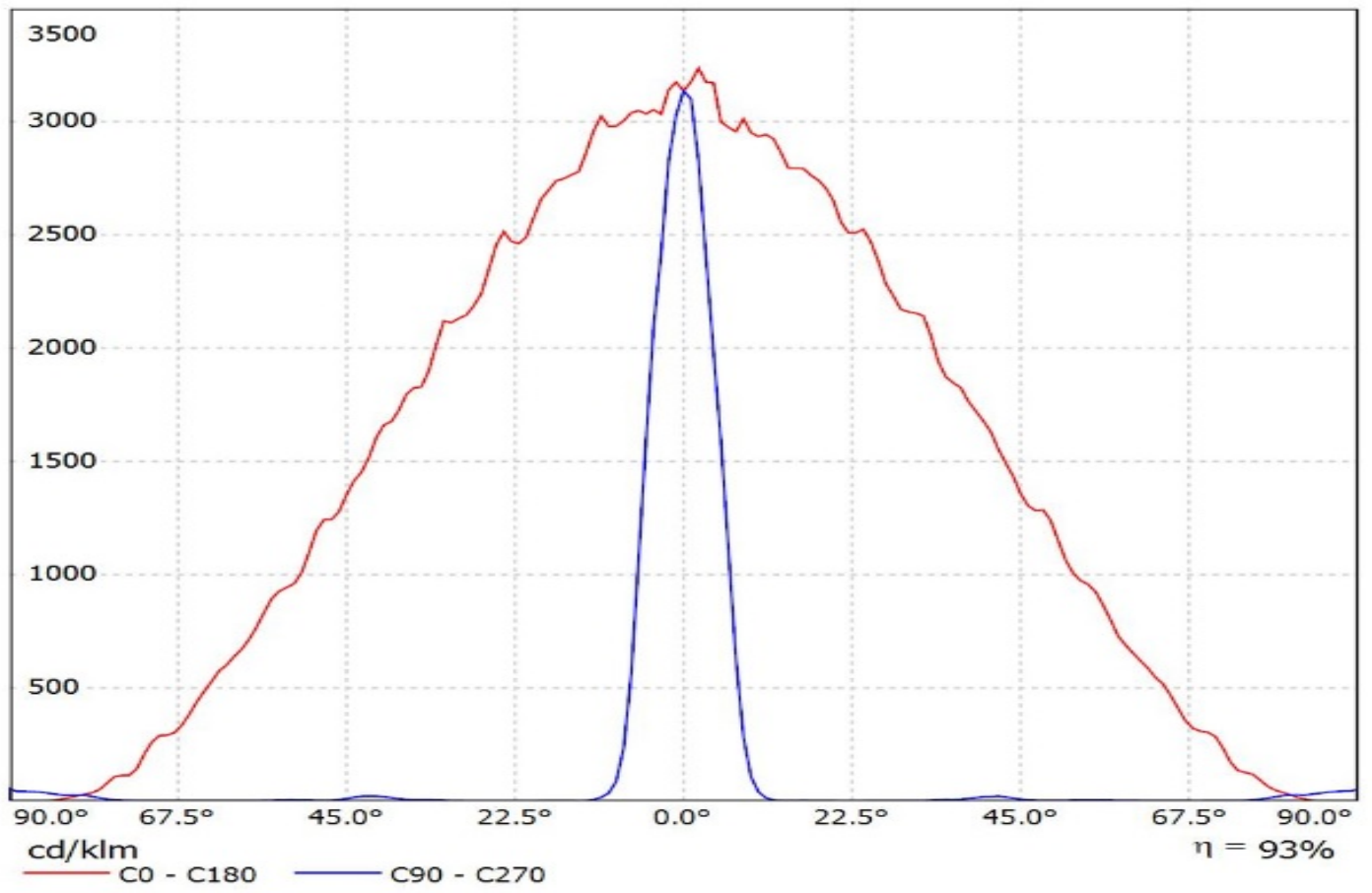
Luminaire: LEDiL Oy CA14366\_FLARE-MAXI-TAPE\_(XP-L)  
Lamps: 1 x Cree\_XP-L\_130.2lm@250mA\_P=0.73723W\_I=249.9mA



Luminaire: Ledil Oy CA14366\_FLARE-MAXI-TAPE\_(XHP35\_HD)\_SIMULATED  
Lamps: 1 x Cree XHP35 HD

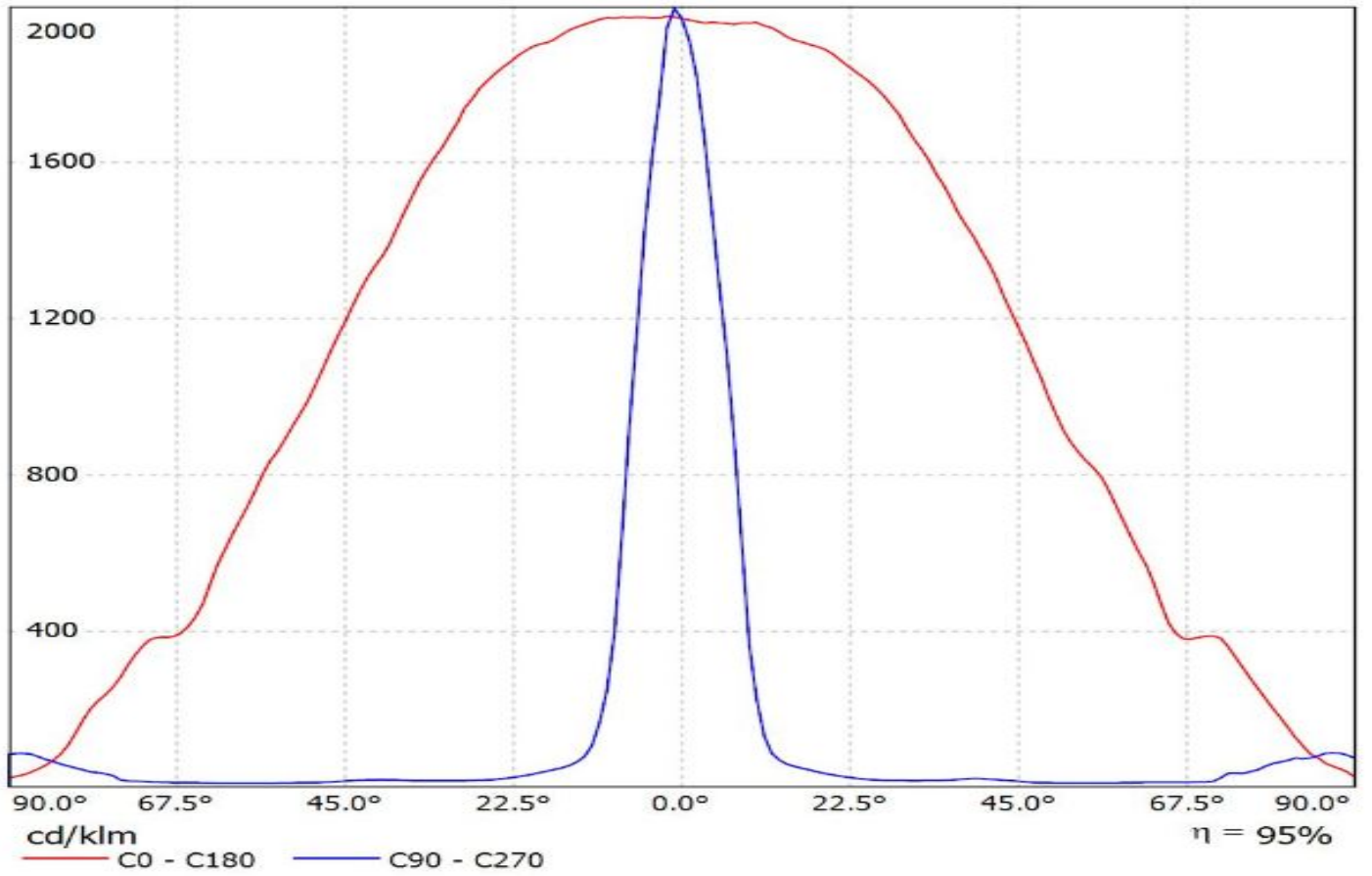


Luminaire: Ledil Oy CA14366\_FLARE-MAXI-TAPE\_(XHP35\_HI)\_SIMULATED  
Lamps: 1 x Cree XHP35 HI

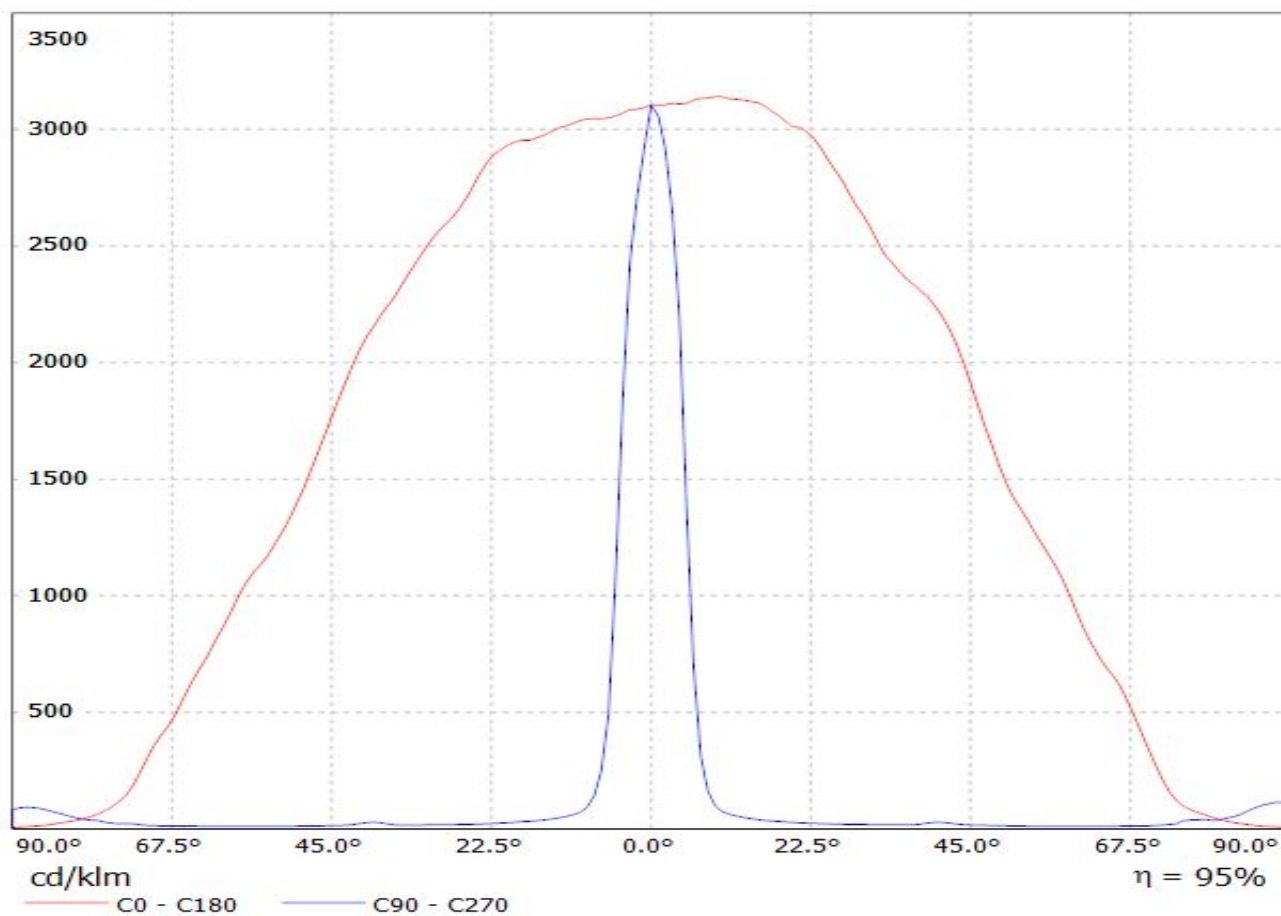


Luminaire: Ledil CA14366\_FLARE-MAXI-TAPE\_(XP-L2)

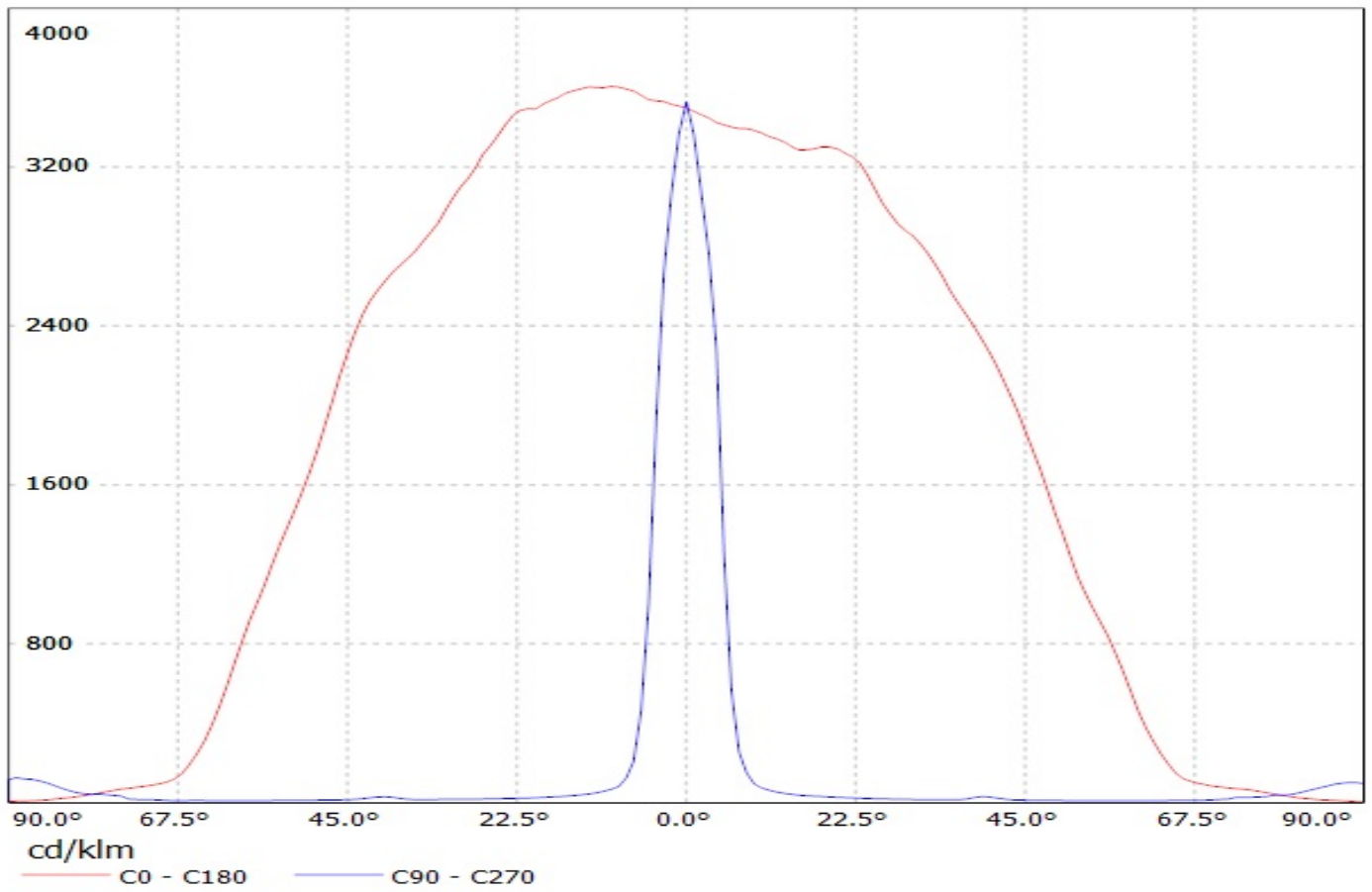
Lamps: 1 x Cree\_XP-L2\_(XPLWT-00-0000-000HU630G)\_115.505lm@250mA\_P=0.72165W\_I=0.25A



Luminaire: LEDiL Oy CA14366\_FLARE-MAXI-TAPE\_(Luxeon\_TX) Eff.95.1%  
Lamps: 1 x Luxeon\_TX\_(L1T2-3585)\_80.1801lm@250mA\_CCT=3500K\_P=0.731482W\_I=249.9mA

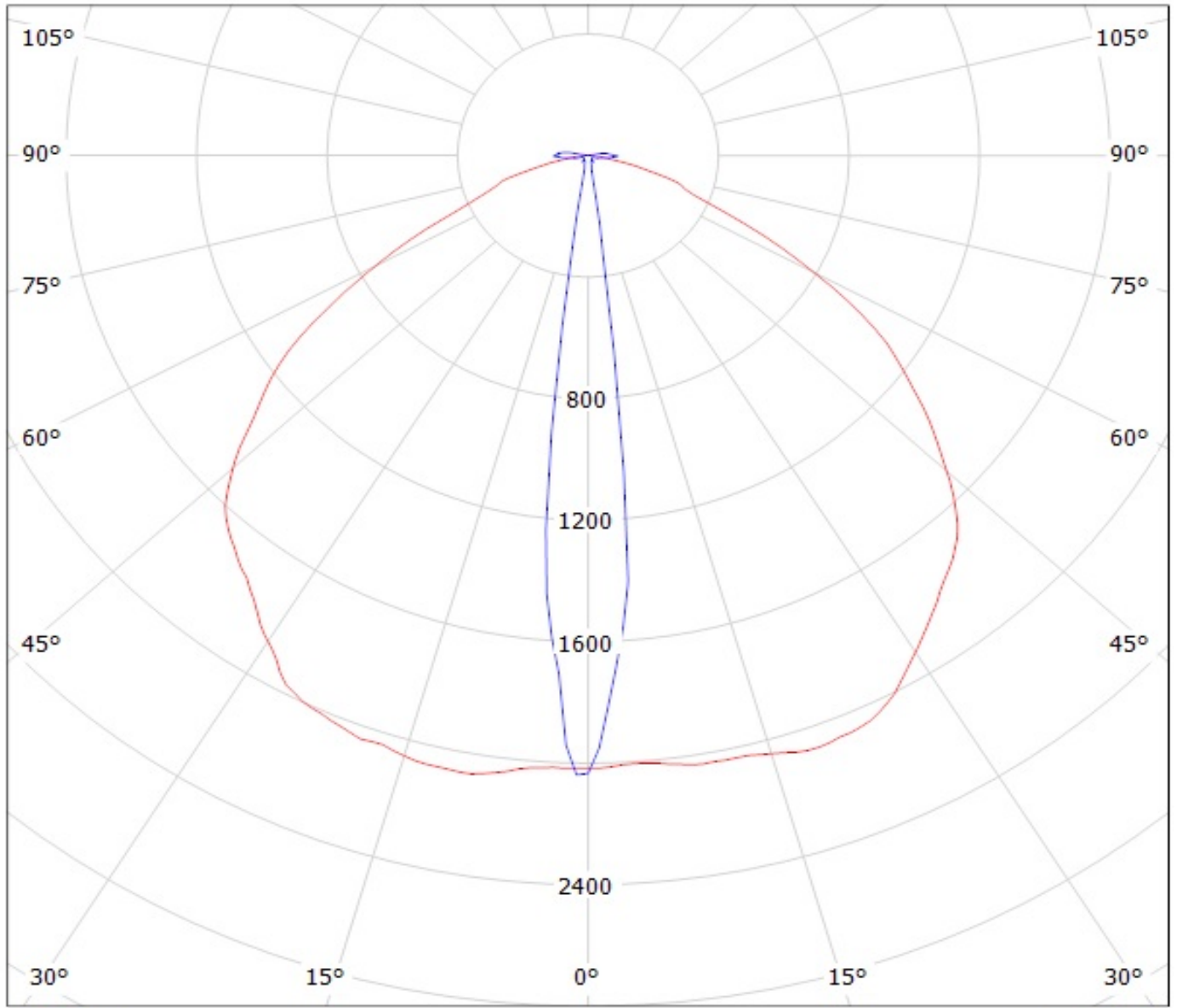


Luminaire: LEDiL Oy CA14366\_FLARE-MAXI-TAPE\_(LH351Z) Eff: 94%  
Lamps: 1 x SAMSUNG\_LH351Z\_91.81lm@250mA\_P=0.748076W\_I=249.9mA





Luminaire: LEDiL Oy CA14366\_FLARE-MAXI-TAPE\_(XP-L)  
Lamps: 1 x Cree\_XP-L\_130.2lm@250mA\_P=0.73723W\_I=249.9mA

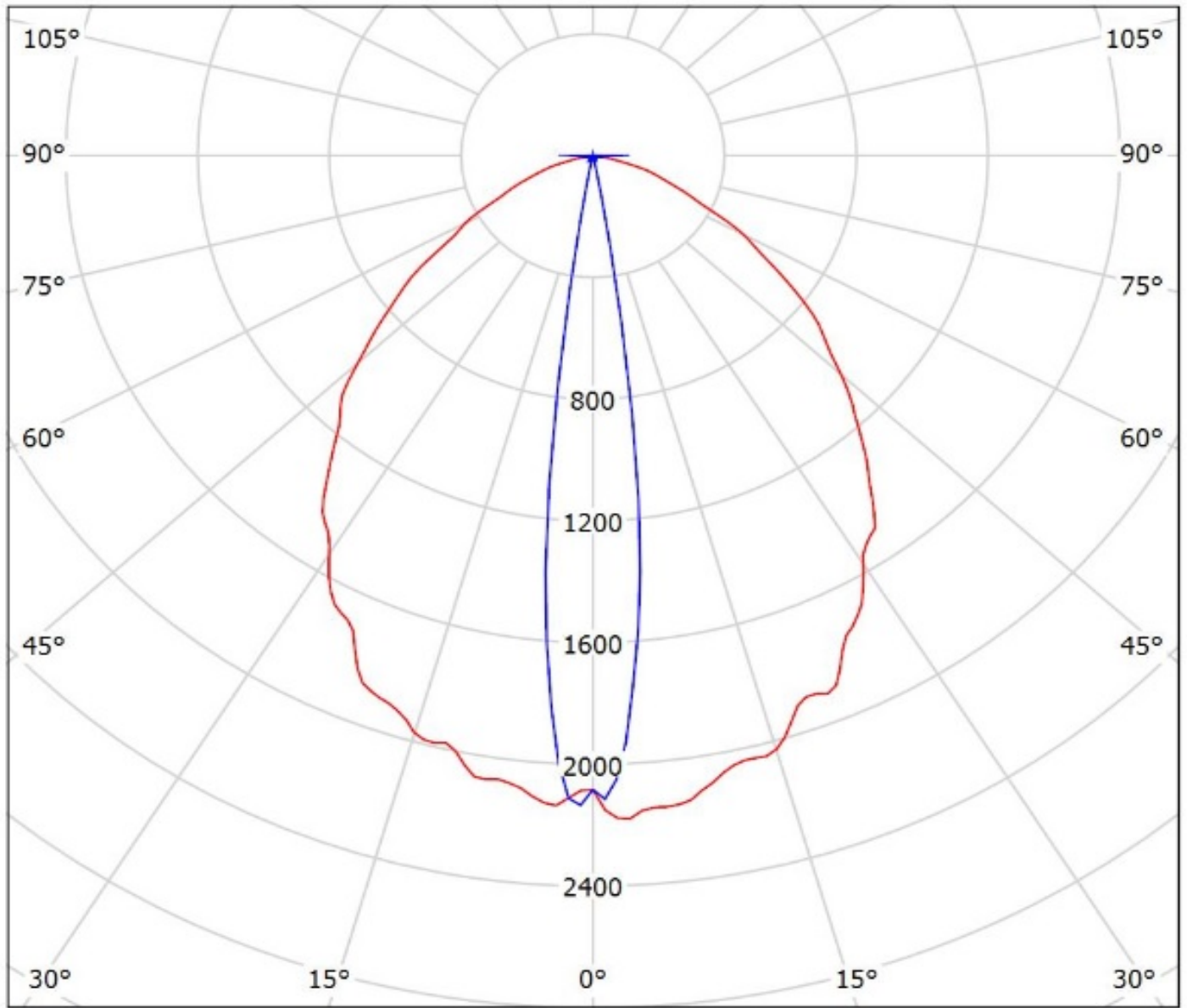


cd/klm

— C0 - C180    — C90 - C270

$\eta = 94\%$

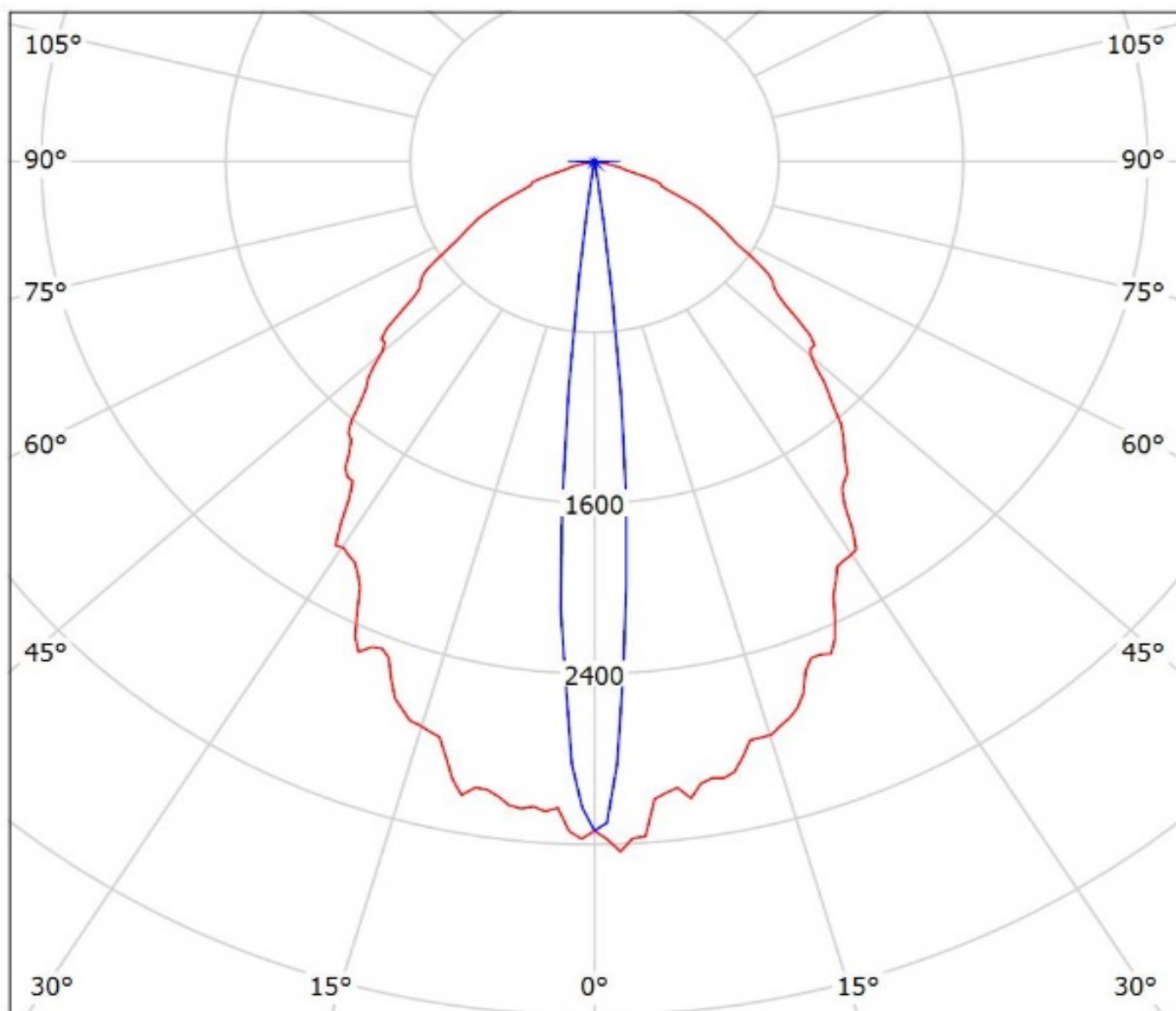
Luminaire: Ledil Oy CA14366\_FLARE-MAXI-TAPE\_(XHP35\_HD)\_SIMULATED  
Lamps: 1 x Cree XHP35 HD



cd/klm  
— C0 - C180 — C90 - C270

$\eta = 92\%$

Luminaire: Ledil Oy CA14366\_FLARE-MAXI-TAPE\_(XHP35\_HI)\_SIMULATED  
Lamps: 1 x Cree XHP35 HI

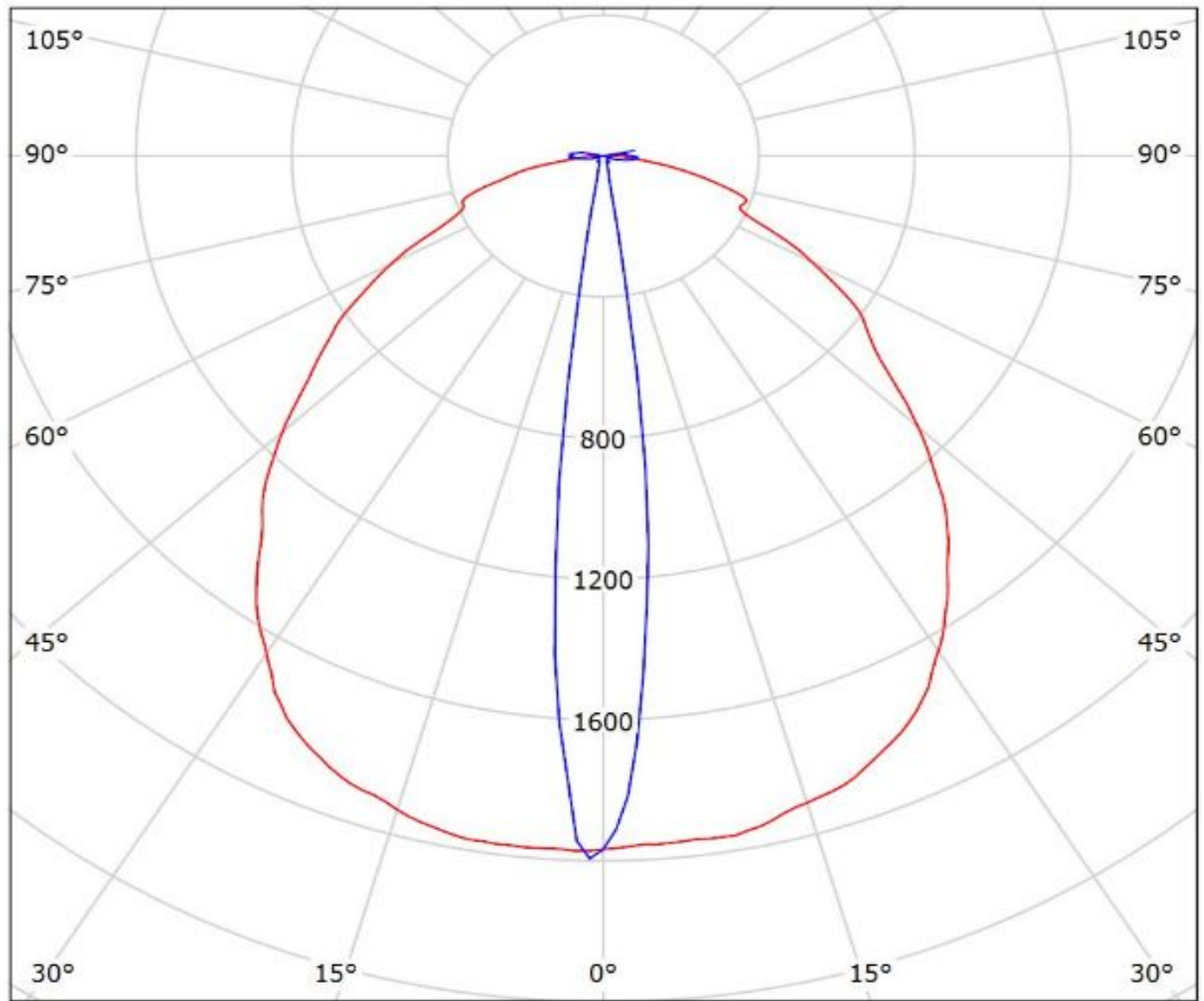


cd/klm  
— C0 - C180 — C90 - C270

$\eta = 93\%$

Luminaire: Ledil CA14366\_FLARE-MAXI-TAPE\_(XP-L2)

Lamps: 1 x Cree\_XP-L2\_(XPLWT-00-0000-000HU630G)\_115.505lm@250mA\_P=0.72165W\_I=0.25A



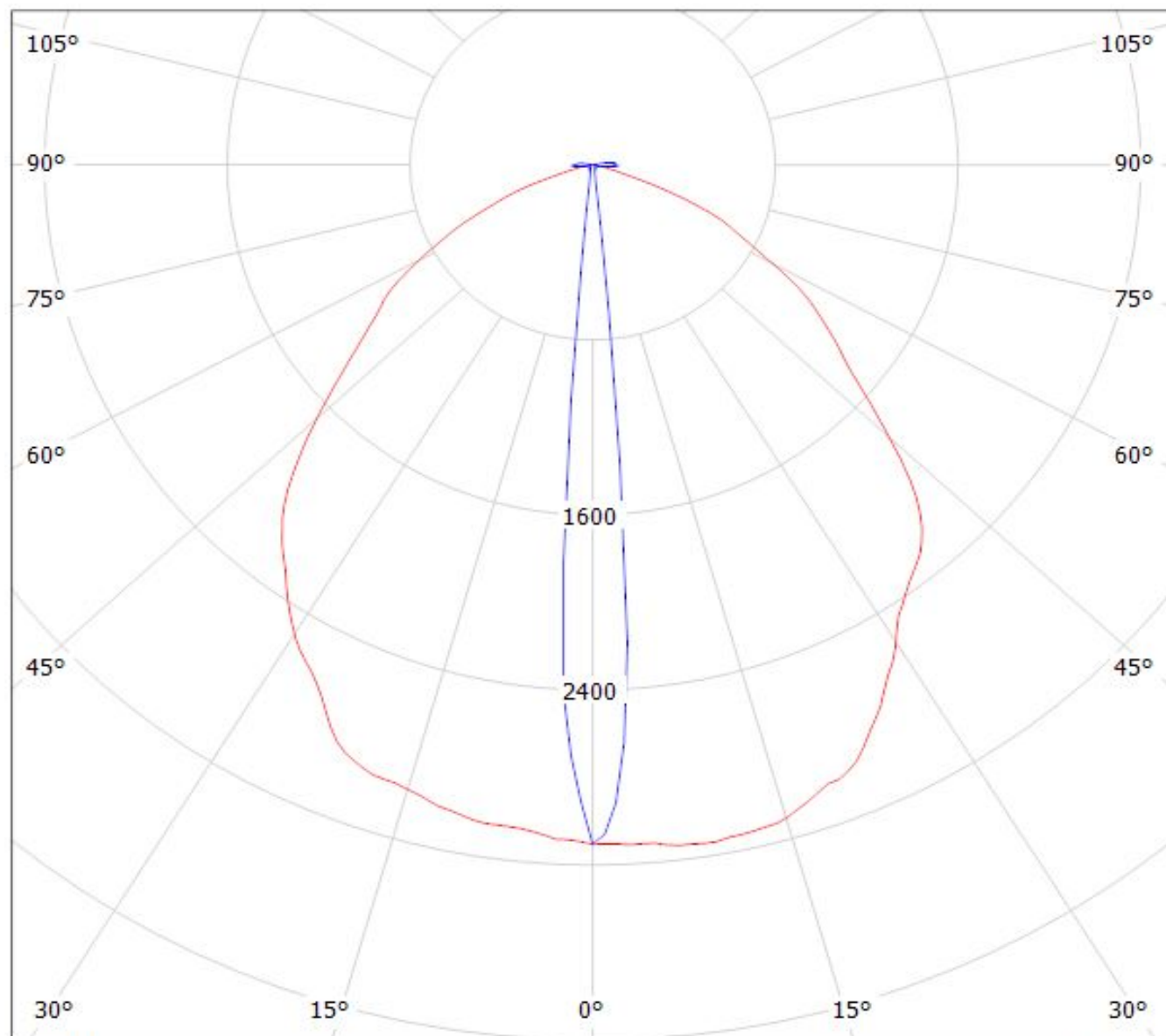
cd/klm

— C0 - C180    — C90 - C270

$\eta = 95\%$

Luminaire: LEDiL Oy CA14366\_FLARE-MAXI-TAPE\_(Luxeon\_TX) Eff.95.1%

Lamps: 1 x Luxeon\_TX\_(L1T2-3585)\_80.1801lm@250mA\_CCT=3500K\_P=0.731482W\_I=249.9mA



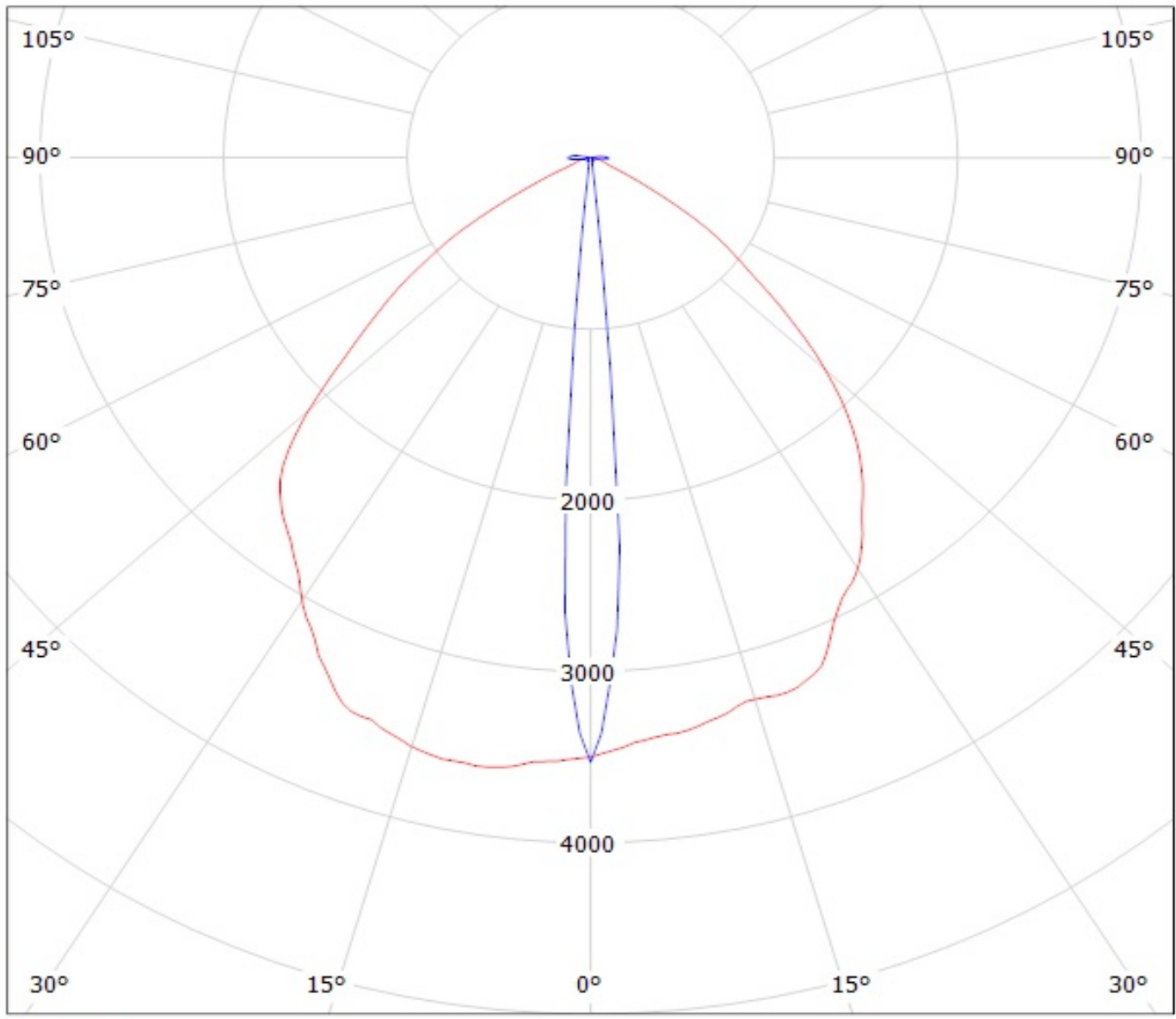
cd/klm

— C0 - C180

— C90 - C270

$\eta = 95\%$

Luminaire: LEDiL Oy CA14366\_FLARE-MAXI-TAPE\_(LH351Z) Eff: 94%  
Lamps: 1 x SAMSUNG\_LH351Z\_91.81lm@250mA\_P=0.748076W\_I=249.9mA



cd/klm  
— C0 - C180 — C90 - C270

**NOTE: The typical divergence will be changed by different color, chip size and chip position tolerance. The typical total divergence is the full angle measured where the luminous intensity is half of the peak value.**