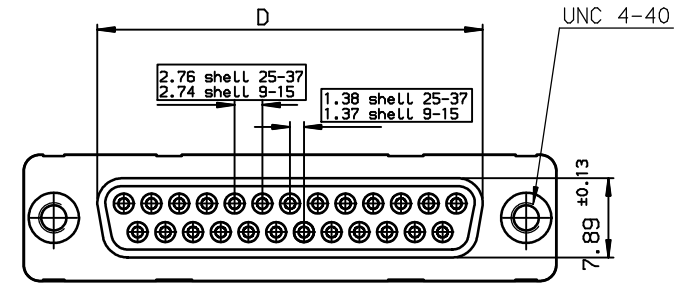
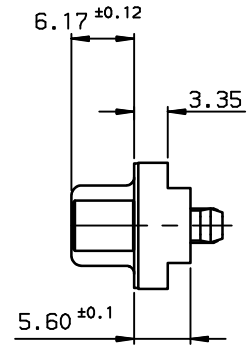
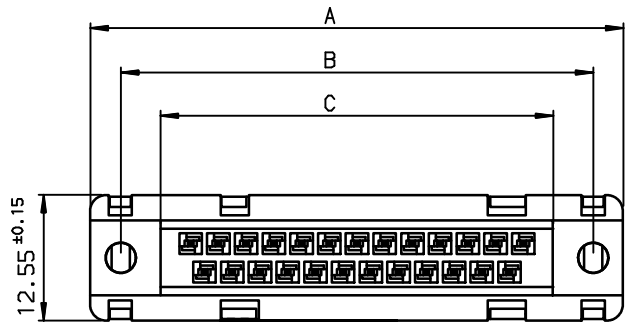


Copyright FCI. **FCI**



TIN LEAD PART NUMBER

SHELL	A±0.38	B±0.12	C±0.10	D±0.25	E±0.07	PART NUMBER
09	30.81	24.99	16.96	16.21	10.96	D09S14A*GV00
15	39.14	33.32	25.18	24.54	19.18	D15S14A*GV00
25	53.03	47.04	39.12	38.25	33.12	D25S14A*GV00
37	69.32	63.50	55.68	54.71	49.68	D37S14A*GV00

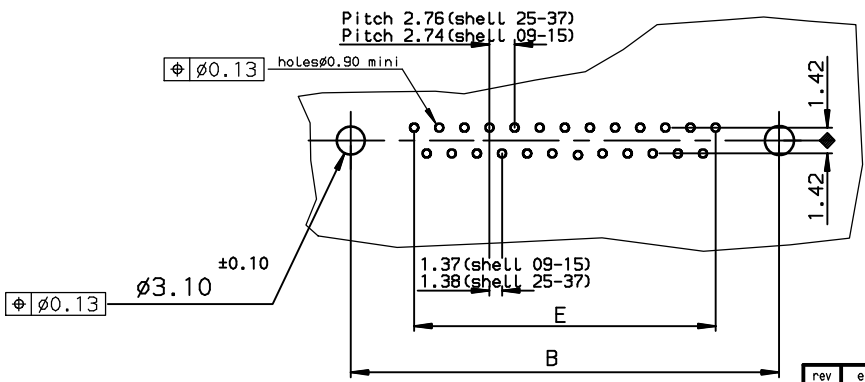
Protection: 4 --> flash AU
6 --> 0.76µ AU

LEAD FREE PART NUMBER

SHELL	A±0.38	B±0.12	C±0.10	D±0.25	E±0.07	PART NUMBER
09	30.81	24.99	16.96	16.21	10.96	D09S14A*GV00LF
15	39.14	33.32	25.18	24.54	19.18	D15S14A*GV00LF
25	53.03	47.04	39.12	38.25	33.12	D25S14A*GV00LF
37	69.32	63.50	55.68	54.71	49.68	D37S14A*GV00LF

Protection: 4 --> flash AU
6 --> 0.76µ AU

PC card drilling dimensions(after plating)
(thickness 1.60±0.20mm)



GENERAL CHARACTERISTICS AND ROHS INFORMATIONS:
SEE DRAWING C01-8646-0000

European Views

www.fciconnect.com		surface ISO 1302 ✓	tolerance std ISO 406 ISO 1101	projection mm
TOLERANCES UNLESS OTHERWISE SPECIFIED				
Dr	PESSON	1992/01/08	ANGULAR	LINEAR
Eng	PESSON	1992/01/08	0.x	±0.1
Chr	LEGARE	1992/01/08	0.xx	±0.1
Appr	LEGARE	1992/01/08	0.xxx	±0.1
Product family			D-SUB	Spec ref -
title FEMALE CONNECTOR, LOW PROF		size A3		Scale 2
straight solder type for		ECN LS06-0097		Rev. F
catalog no		C01-8646-0051		CUSTOMER sheet 1 of 1

rev	ecn no	dr	date
C	-	-	1996/09/04
D	LS05-001	MPE	2005/03/09
E	LS05-0056	MPE	2005/06/27
F	LS06-0097	LGO	2006/07/29
-	-	-	-
-	-	-	-
-	-	-	-