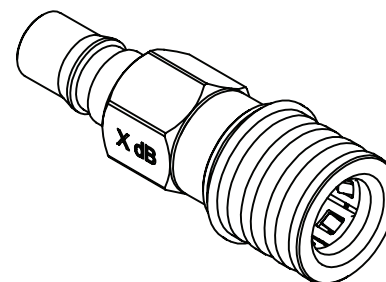
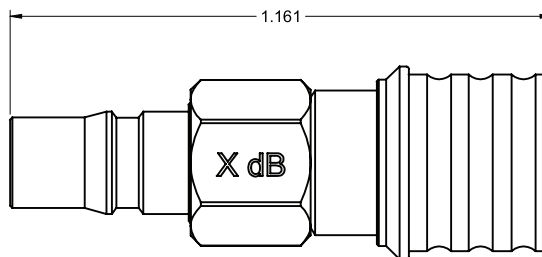
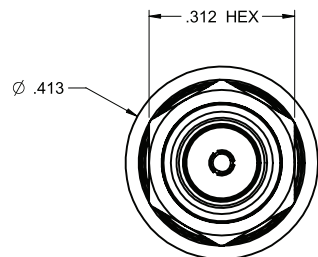


| PART NUMBER | ATTENUATION "X" dB |
|--------------------|--------------------|
| ATT-0106-01-QMA-32 | 1 |
| ATT-0106-02-QMA-32 | 2 |
| ATT-0106-03-QMA-32 | 3 |
| ATT-0106-06-QMA-32 | 6 |
| ATT-0106-10-QMA-32 | 10 |

| | | | | |
|-----------------------------------|---|---|---|--|
| DRAWING NO. ATT-0106-XX-QMA-32 | | | | |
| REVISIONS | | | | |
| 1 RELEASE | | | | |
| 1-30-2011 | R | B | L | |
| | S | Y | M | |



SPECIFICATION:

1. ELECTRICAL RATING
 IMPEDANCE: 50 OHMS
 FREQUENCY RANGE: 0-6 GHz
 ATTENUATION ACCURACY:

| dB | DC-4 GHz | DC-4 GHz |
|------|----------|----------|
| 1-3 | ±0.3 | ±0.5 |
| 4-6 | ±0.4 | ±0.5 |
| 7-10 | ±0.5 | ±0.5 |

VSWR MAX.

| dB | DC-2.5 GHz | 2.5-4 GHz | 4-6 GHz |
|------|------------|-----------|---------|
| 1-3 | 1.15:1 | 1.20:1 | 1.25:1 |
| 4-6 | 1.15:1 | 1.20:1 | 1.25:1 |
| 7-10 | 1.15:1 | 1.25:1 | 1.30:1 |

AVERAGE INPUT POWER: 2W MAX AT +25 CELSIUS DEGREE, DERATED LINEARLY TO 0.5W MAX AT +125 CELSIUS DEGREE.

2. MECHANICAL RATING
 ENGAGEMENT FORCE: 8.0 LBS MAX.
 DISENGAGEMENT FORCE: 2.5 LBS MIN.
 COUPLING MECHANISM RETENTION FORCE: 13.5 LBS MIN.
 CONNECTOR DURABILITY: 500 CYCLES MIN.


3. ENVIRONMENTAL RATING
 TEMPERATURE RANGE: -55 TO 125 CELSIUS DEGREE
 SHOCK: MIL-STD-202, METHOD 213, CONDITION I.
 THERMAL SHOCK: MIL-STD-202, METHOD 107, CONDITION B.
 VIBRATION: MIL-STD-202, METHOD 204, CONDITION D.

4. MATERIAL AND FINISH
 BODY/NUT: BRASS, TRI-ALLOY PLATED.
 COUPLING SPRING: BERYLLIUM COPPER, TRI-ALLOY PLATED.
 FEMALE CONTACT: BERYLLIUM COPPER, GOLD PLATED.
 MALE CONTACT: BRASS, GOLD PLATED.
 INSULATOR: TEFLON.

THIS DRAWING TO BE INTERPRETED
 PER ANSI Y 14.5M - 1994

COMPANY CONFIDENTIAL

| | | | |
|---|---------|---------------------|-------------------|
| TOLERANCE UNLESS OTHERWISE SPECIFIED | | DRAWN BY R.SHEN | DATE 1-28-2011 |
| DECIMALS | INCH | CHECKED BY B.YU | DATE 1-28-2011 |
| X.X | ± 0.010 | APPROVED BY L.MA | DATE 1-30-2011 |
| X.XX | ± 0.005 | | |
| X.XXX | ± 0.003 | | |
| ANGLES | ± 0.5° | U/M | INCH |
| THIS DRAWING WAS PRODUCED BY COMPUTER, DO NOT SCALE DRAWING OR UPDATE MANUALLY. | | | |

| | | |
|--|-----------------------------------|-----------|
|  cinch <small>CONNECTIVITY SOLUTIONS</small> <small>a bel group</small> | | |
| TITLE QMA 6 GHZ ATTENUATOR, PLUG TO JACK, HEX BODY | | |
| SHEET 1 OF 1 | DRAWING NO. ATT-0106-XX-QMA-32 | SIZE C |