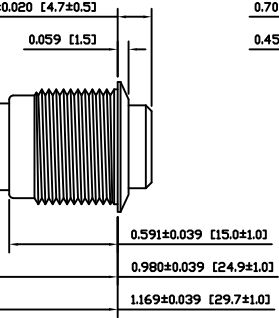
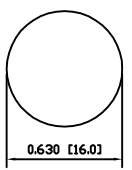
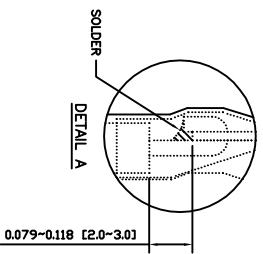
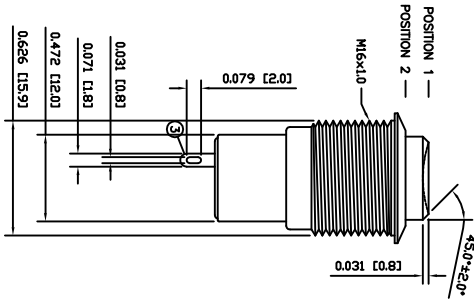
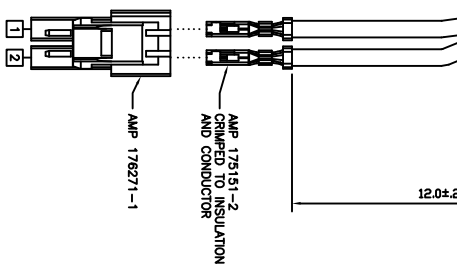


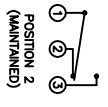
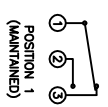
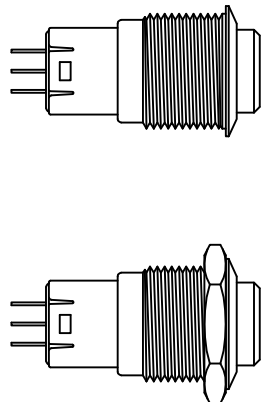
0.709 [18.0]  
0.453 [11.5]



HEAT SHRINK  
LENGTH 11MM MIN.  
HEAT SHRINK  
LENGTH 13MM MIN.  
HEAT SHRINK  
3/8 DIA  
BLACK UL 3321  
AWG 22, 600V 150°C



MAXIMUM PANEL THICKNESS: 0.315 [8.0mm]

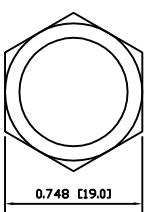
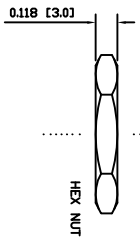


SUGGESTED PANEL CUTOUT

SCHEMATIC

SPECIFICATIONS

FUNCTION:  
1P2T ON-ON  
RATING:  
-003-S0F1-2000 (200901C07839):  
2A 490°C [IND]  
CONTACT RESISTANCE:  
Initial: 50mΩ Max. at 1A 120°C  
1,500mΩ Min. at 500VDC  
INSULATION RESISTANCE:  
2,000VAC Min. for 1 Minute  
ELECTRICAL LIFE:  
50,000 Cycles  
MECHANICAL LIFE:  
200,000 Cycles  
TEMPERATURE:  
Operating: -25°C to 85°C  
APPROVALS:  
**NDP**  
COMPLIANT



EXPLODED VIEW

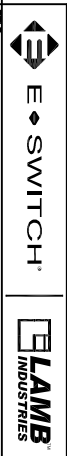
ASSEMBLED VIEW

COLORS AND FINISH

BEZEL:  
Stainless Steel  
Polished Finish  
ACTUATOR:  
Stainless Steel  
Polished Finish  
ILLUMINATION:  
None  
MARKING:  
None

MATERIALS

BUSING:  
Stainless Steel (304)  
BASE:  
Polybutylene Terephthalate (PBT)  
ACTUATOR:  
Stainless Steel (304)  
Polycarbonate (PC)  
INNER ASSEMBLY:  
Polyoxymethylene (POM)  
Polycarbonate (PC)  
Polybutylene Terephthalate (PBT)  
Silver Plated Brass (H62)  
Beryllium Copper  
SPRING:  
Stainless Steel (304)  
CONTACTS:  
Silver/Cadmium Oxide (AgCdO)  
TERMINALS:  
Silver Plated Brass (H62)



PV3SZ01Z1330SS

REV.	DATE	BY	CHK
C	10/07/28	CAB	
A	09/07/10	CAB	
B	10/07/11	CAB	
B	09/12/23	CAB	

THE INFORMATION CONTAINED IN THIS DOCUMENT IS PROPRIETARY TO E-SWITCH AND IS NOT TO BE COPIED OR TRANSMITTED

REV.	DATE	BY	CHK
A			
B			

DATE	DESCRIPTION
2014	2014
2022	2022

DATE	REVISION
JUNE 23, 2011	B