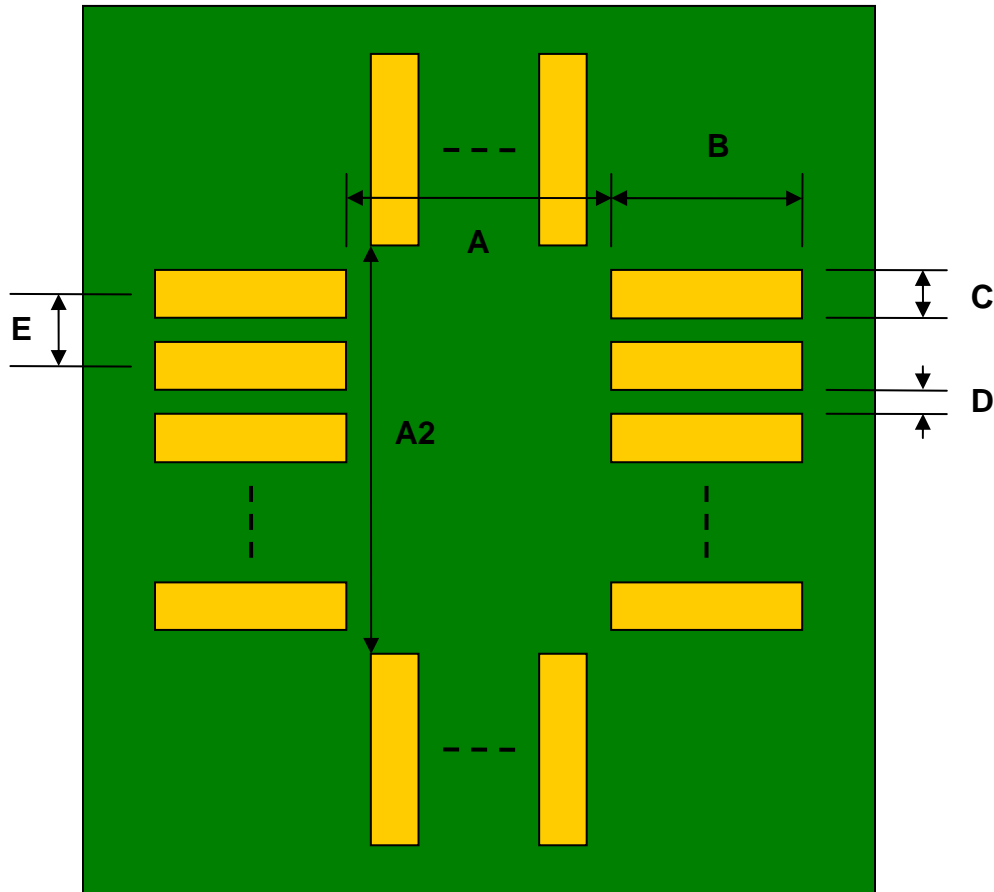


## TQFP-64 to DIP-64 SMT Adapter (1.0 mm pitch, 14 x 20 mm body)

REF.	DIMENSIONS					
	mm			inches		
	MIN.	TYP.	MAX.	MIN.	TYP.	MAX.
A		14.30				
A2		20.30				
B		2.10				
C		0.55				
D		0.45				
E		1.00				
F					0.600	
G					0.100	
H					0.025	

Top View (SMT Footprint)



(Representative drawing only - not to scale)

### Bottom View (DIP Pins)



(Representative drawing only - not to scale)

### Side View (DIP Pins)



(Representative drawing only - not to scale)